



Chemical Anchors

EVO-900 Plus

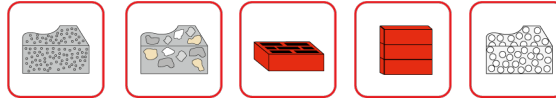
Epoxy Acrylate Chemical Anchor

Main Material

- Concrete
- Natural Stone
- Hollow Brick
- Solid Brick
- Aerated Concrete

Application Field

- Warehouse Rackings
- Steel Structure
- Fences
- Billboards
- Cantilevers
- Facades



- For Heavy and Medium Loads
- Usable in Dry, Wet, and Water-Filled Holes
- Time-Efficient with Rapid Setting
- Reusable by Replacing the Mixing Tip When Partially Used
- Used with Sieve for Hollow Wall Materials
- Usable in Short Edge Distances Due to Non-Expansion Anchoring
- Summer Version for High Temperatures, Ensures Faster Setting
- Winter Version for Low Temperatures, Provides Slower Setting

Heavy Duty Anchors

General Purpose Fasteners

Frame Anchors

Aerated Concrete Anchors

Drywall Anchors

Nailing Systems

Insulation Anchors

Screws

Drill Bits

Scaffold Fasteners

Solar System Fasteners

Special Fixing



EVO-900 Plus

Technical Information



Complementary Products



page 98



page 35



page 24



page 27



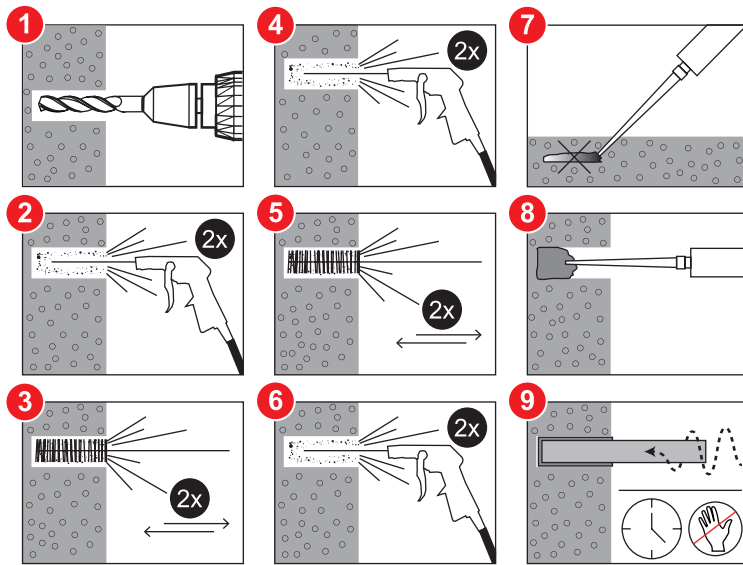
page 34

Cartridge Temperature	T work (minutes)	T Load (minutes)
+0 °C,+5 °C	45 min	3h min
+5 °C,+9 °C	25 min	2h min
+10 °C,+14 °C	20 min	100 min
+15 °C,+19 °C	15 min	80 min
+20 °C,+29 °C	6 min	45 min
+30 °C,+34 °C	4 min	25 min
+35 °C,+39 °C	2 min	20 min

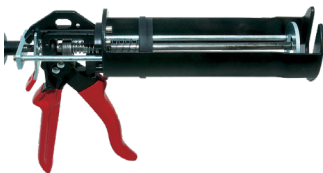
Vesta EVO-900 Plus Summer		
Cartridge Temperature	T work (minutes)	T Load (minutes)
+10 °C,+14 °C	30 min	5h
+15 °C,+19 °C	20 min	210 min
+20 °C,+29 °C	15 min	145 min
+30 °C,+34 °C	10 min	80 min
+35°C,+39 °C	6 min	45 min
+40°C,+44 °C	4 min	25 min
+45°C	2 min	20 min

Vesta EVO-900 Plus Winter		
Cartridge Temperature	T work (minutes)	T Load (minutes)
0 °C,+4 °C	25 min	120 min
+5°C, +9 °C	10 min	60 min
+10°C,+14 °C	4 min	35 min
+15°C,+19 °C	3 min	25 min
+20°C +29 °C	2 min	15 min





Product	Art. No.	Cartridge Volume	Application Gun	Qty Per Box
EVO-900 Plus 380+30ml	63301	410 ml	HKD 21	12
EVO-900 Plus Summer 380+30ml	63302	410 ml	HKD 21	12
EVO-900 Plus Winter 380+30ml	63303	410 ml	HKD 21	12



Product	Art. No.	Cartridge Type	Material
HKD 21	66002	380 ml, 420 ml Coaxial 10:1	Metal / Metal



Product	Art. No.	Cartridge Type
MIXER	66020	EVO-900 Plus



Product	Art. No.
HKP 1	66010

EVO-900 Plus

Application

EVO-900 Plus

Technical Information

HKD 21

Accessory

MIXER

Accessory

HKP 1

Accessory

Complementary Products



page 126

page 40

page 28

page 31



Chemical Anchors

Heavy Duty Anchors

General Purpose Fasteners

Frame Anchors

Aerated Concrete Anchors

Drywall Anchors

Nailing Systems

Insulation Anchors

Screws

Drill Bits

Scaffold Fasteners

Solar System Fasteners

Special Fixing

