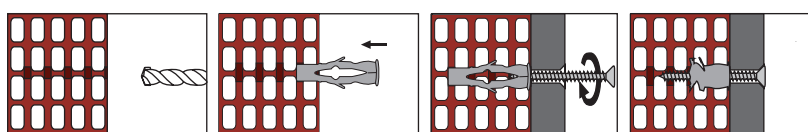


**PA6**  
PURE NYLON

- High grip due to wide-opening flaps expanding in two different directions
- Knot formation in hollow structures
- High-grade nylon material
- Flexible Structure
- Upper flange that prevent rotation



Product	Art. No.	Hole Diameter	Anchor Length	Screw Diameter	Qty Per Box	Qty Per Carton
<b>GBU 6</b>	47101	6	40	3,5 - 4	200	6400
<b>GBU 8</b>	47102	8	50	4,5 - 5	100	3200
<b>GBU 10</b>	47103	10	60	6 - 7	50	1600



Product	Art. No.	Hole Diameter	Anchor Length	Screw Diameter	Qty Per Box
<b>GBU 6</b>	47104	6	40	3,5 - 4	4000
<b>GBU 8</b>	47105	8	50	4,5 - 5	2000
<b>GBU 10</b>	47106	10	60	6 - 7	1000

## GBU

Multi-directional Nylon Plug

### Main Material

- Concrete
- Naturel Stone
- Hollow Brick
- Solid Brick

### Application Field

- Furnitures
- Shelves
- Frames
- Lamps
- Electrical Equipment
- Bathroom Accessories
- Assembly Of Various Lightweight Loads

## GBU

Application

## GBU

Only Plug

## GBU

Only Plug, Big Box

## Complementary Products



page 99



page 100