



Chemical Anchors

KTA

Wedge Anchor

Heavy Duty Anchors

Main Material

- Concrete
- Naturel Stone

General Purpose Fasteners

Application Field

- Facades
- Steel Structures
- Fences
- Handrails
- Machines
- Cantilevers
- Shelves

Frame Anchors

Aerated Concrete Anchors

Drywall Anchors

Nailing Systems

Insulation Anchors

KTA

Application

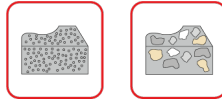
Screws

Drill Bits

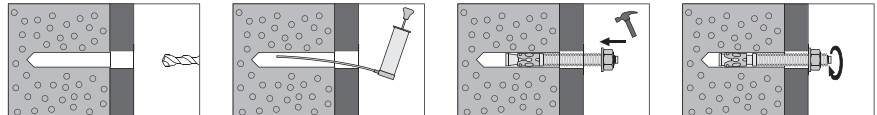
Scaffold Fasteners

Solar System Fasteners

Special Fixing



- Flexible anchoring depth allows for installation at your desired depth due to the long thread length.
- The reduced head diameter prevents thread damage during installation.
- Bolt and washer pre-installed
- Clip design. It is designed for maximum safety.



Complementary Products



page 99



page 35



page 35

KTA

Wedge Anchor

Product	Art. No.	Hole Diameter	Anchor Length	Wrench Size	Qty Per Box	Qty Per Carton
KTA 8x75	52313	8	75	13	150	600
KTA 8x90	52318	8	90	13	100	400
KTA 8x110	52319	8	110	13	75	300
KTA 8x130	52309	8	130	13	60	240
KTA 8x150	52317	8	150	13	50	200
KTA 8x180	52308	8	180	13	30	120
KTA 10x90	52323	10	90	17	80	320
KTA 10x120	52329	10	120	17	50	200
KTA 10x150	52331	10	150	17	50	200
KTA 10x180	52307	10	180	17	40	160
KTA 10x200	52332	10	200	17	30	120
KTA 12x90	52335	12	90	19	50	200
KTA 12x110	52334	12	110	19	50	200
KTA 12x140	52339	12	140	19	30	120
KTA 12x160	52341	12	160	19	30	120
KTA 12x180	52342	12	180	19	25	100
KTA 12x200	52343	12	200	19	20	80
KTA 12x220	52344	12	220	19	15	60
KTA 12x250	52390	12	250	19	10	40
KTA 12x300	52391	12	300	19	5	20
KTA 14x110	52349	14	110	22	25	100
KTA 14x150	52348	14	150	22	20	80
KTA 16x110	52352	16	110	24	25	100
KTA 16x125	52355	16	125	24	25	100
KTA 16x145	52354	16	145	24	20	80
KTA 16x175	52366	16	175	24	15	60
KTA 16x200	52360	16	200	24	10	40
KTA 16x220	52361	16	220	24	10	40
KTA 16x250	52362	16	250	24	10	40
KTA 16x300	52365	16	300	24	5	20
KTA 20x160	52376	20	160	30	10	40
KTA 20x180	52377	20	180	30	10	40
KTA 20x200	52378	20	200	30	10	40
KTA 20x220	52379	20	220	30	5	20
KTA 20x260	52381	20	260	30	5	20
KTA 20x300	52389	20	300	30	5	20
KTA 24x200	52386	24	200	36	5	20
KTA 24x250	52387	24	250	36	5	20
KTA 24x300	52388	24	300	36	5	20
KTA 30x300	52392	30	300	46	4	16



Chemical Anchors

Heavy Duty Anchors

General Purpose Fasteners

Frame Anchors

Aerated Concrete Anchors

Drywall Anchors

Nailing Systems

Insulation Anchors

Screws

Drill Bits

Scaffold Fasteners

Solar System Fasteners

Special Fixing

