



Chemical Anchors

## PRO-X5 Seismic

Pure Epoxy Chemical Anchor

### Main Material

- Concrete
- Cracked Concrete
- Natural Stone
- Hollow Brick
- Solid Brick

### Application Field

- Structural Connections
- Seismic Connections
- Steel Structures
- Expansion Joints
- Post Installed Rebar Connections
- Reinforcement
- Dams
- Power Plants
- Machines
- Cantilevers
- Facade Anchors
- Rail Systems
- Warehouse Rackings



## PRO-X5 Seismic

Technical Information

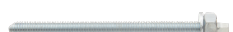
### Complementary Products



page 98



page 35



page 24



page 27



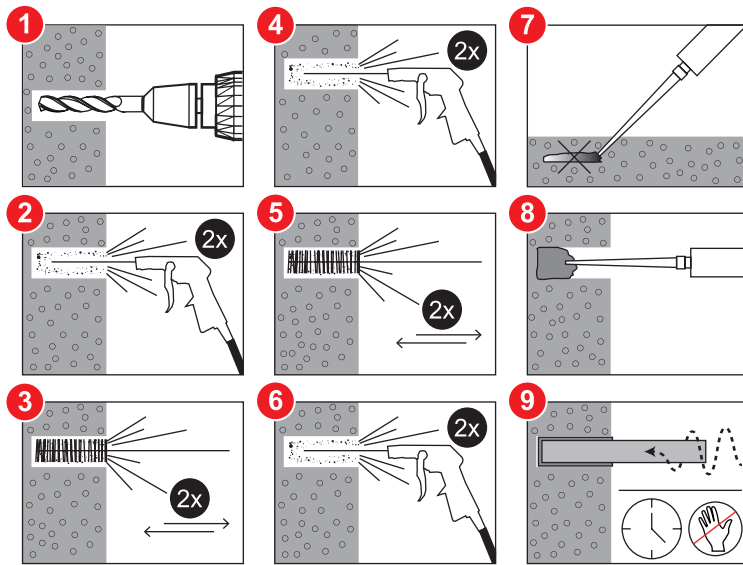
page 34



- Seismic certified
- Post Installed Rebar Connections Certified
- Designed for Heavy and Medium Loads
- Pure Epoxy
- Suitable for Use in Dry, Wet, and Water-Filled Holes
- Styrene Free
- Usable in Short Edge Distances Due to Non-Expansion Anchoring
- Reusable by Replacing the Mixing Tip During Partial Use
- Applicable in Holes Created by Core Drilling

Cartridge Temperature	T work (minutes)	T Load (hours)
+5,+10 °C	20	24
+10,+15 °C	20	12
+15,+20 °C	15	8
+20,+25 °C	11	7
+25,+30 °C	8	6
+30,+35 °C	6	5
+35,+40 °C	4	4
+40 °C	3	3





Product	Art. No.	Cartridge Volume	Application Gun	Qty Per Box
<b>PRO X5 Seismic 600 ml</b>	65501	600 ml	HKD 31	12



Product	Art. No.	Suitable Cartridge	Material
<b>HKD 31</b>	66003	600ml 1:1 Side by Side	Metal



Product	Art. No.	Suitable Cartridge
<b>MIXER</b>	66021	Pro-X5 Seismic



Product	Art. No.
<b>HKP 1</b>	66010

## PRO-X5 Seismic

Application

## PRO-X5 Seismic

Technical Information

## HKD 31

Accessory

## MIXER

Accessory

## HKP 1

Accessory



Chemical Anchors

Heavy Duty Anchors

General Purpose Fasteners

Frame Anchors

Aerated Concrete Anchors

Drywall Anchors

Nailing Systems

Insulation Anchors

Screws

Drill Bits

Scaffold Fasteners

Solar System Fasteners

Special Fixing

