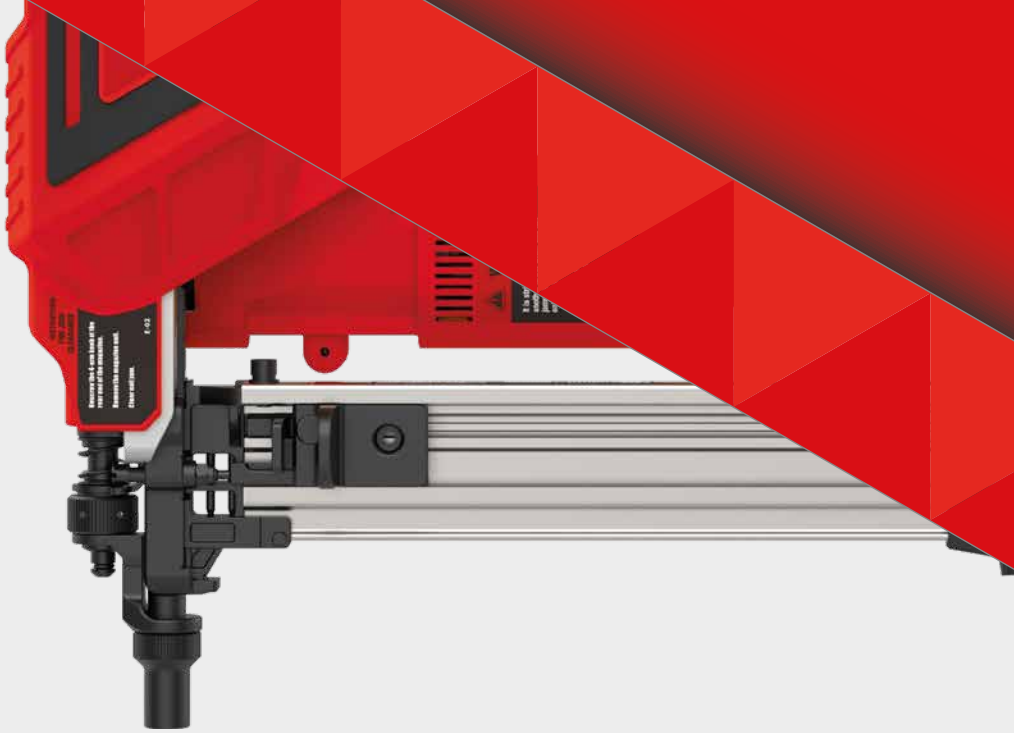


VF *vesta*

FIXING SYSTEMS



2025
CATALOGUE



Start

Open Project

LiveUpdate
Check for available software updates

VF vesta
FIXING SYSTEMS

DesignFIX Modules

Anchor Design
Mechanical + chemical anchors

Rail Design

Post installed rebar Design

Masonry Design

Settings/Help

Instructions / Training / Videos

Settings

Help

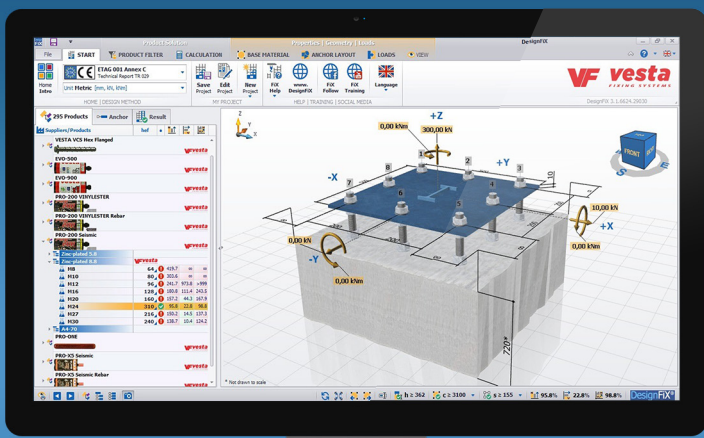
Info

NEWS

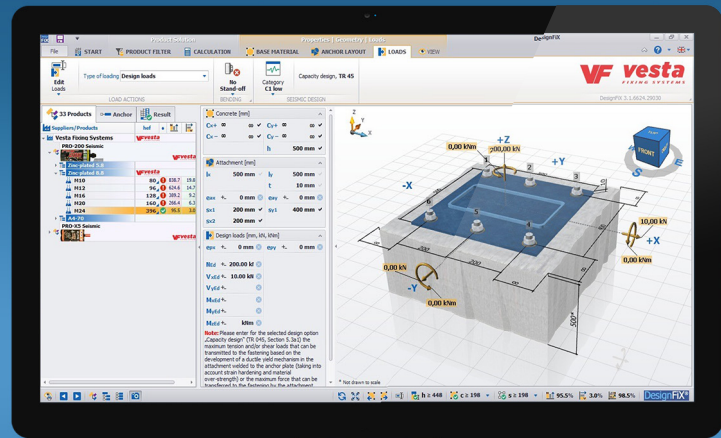
Touch

vesta DesignFIX

Reduce your workload with our calculation software



Easy Calculation



Seismic Design

Technical Guide for Anchor Systems

It is necessary to choose the right product for the safety of the connection. Some parameters should be taken into consideration when choosing the right anchor for your application. Wrong product selections may cause accidents.

The most important parameters that affect the system of anchor;

- Main materials-the material that anchor hang on
- Properties of the fixing material - vibration, seismic resistance etc.
- Temperature - maximum and minimum temperature
- Environment corrosivity - The effect of humidity and chemicals on corrosion.

Main Materials



Concrete

Concrete is the most common material that used in construction industry. Connections should be made after the concrete is fully cured.

Universal expressions such as C20/25 are used in concrete strength classification. This classification is made according to the compressive strength of the concrete. When calculating the compressive strength, cylindrical (16x32 cm) and cubic (15x15x15 cm) strengths are tested.

Concrete class	Cylindrical strength	Cubic strength
C16/20	16 Mpa	20 Mpa
C20/25	20 Mpa	25 Mpa
C25/30	25 Mpa	30 Mpa
C30/37	30 Mpa	37 Mpa
C35/45	35 Mpa	45 Mpa
C45/55	45 Mpa	55 Mpa
C50/60	50 Mpa	60 Mpa



Chemical Anchors

Heavy Duty Anchors

General Purpose Fasteners

Frame Anchors

Aerated Concrete Anchors

Drywall Anchors

Nailing Systems

Insulation Anchors

Screws

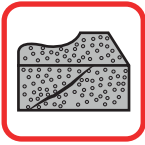
Drill Bits

Scaffold Fasteners

Solar System Fasteners

Special Fixing



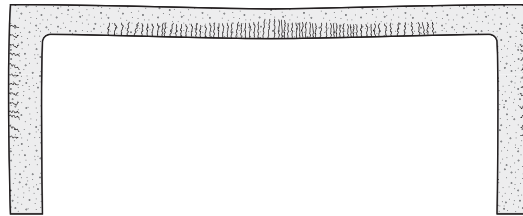


Cracked Concrete

Another classification of concrete is either if it is cracked or uncracked. If there is compression, it is called uncracked, if there is tension, it is called cracked concrete.

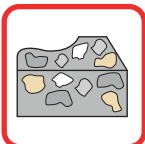
Cracked concrete is challenging material for the anchors. Anchors should be designed to work in the cracked concrete. Load capacity of anchors are lower in cracked concrete.

A simple drawing of a simple system. Some areas are under compression while some are under tension force.



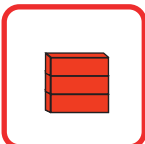
Hollow Concrete

Hollow concrete is generally used for floors and precast concretes. It looks same as concrete. But the holes inside cause problem for anchors.



Natural Stone

Natural stones are used widely before concrete became popular. All natural stones are different because natural stones are formed under natural conditions.



Solid Brick

Solid bricks are structural materials made by clay. It may be used in load bearing walls or it may be used as a cladding material.

Chemical Anchors

Heavy Duty Anchors

General Purpose Fasteners

Frame Anchors

Aerated Concrete Anchors

Drywall Anchors

Nailing Systems

Insulation Anchors

Screws

Drill Bits

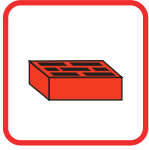
Scaffold Fasteners

Solar System Fasteners

Special Fixing



INFO



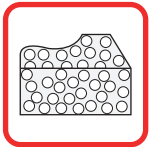
Hollow Brick

Hollow bricks have many different shapes. Some of these types are standardized.



Bims

Concrete-based bims blocks are highly fragile construction materials. This makes them challenging to work with when it comes to anchor or fastening systems.



Aerated Concrete

Aerated concretes are very light weight materials. Its usage is becoming increasingly common; however, it presents challenges for anchorage systems.



Drywall

Drywalls, commonly used in buildings for creating rooms or for architectural purposes. They are made by shaping gypsum into flat sheets. Gypsum itself is a weak material. Since plasterboard wall systems almost always have a hollow space behind them, numerous rear-grip anchor designs have been developed to address this challenge.



Chipboard - Plywood - MDF

These materials are panels made from wood particles, available in varying thicknesses. The most durable type is plywood, while the least durable is chipboard.



Wood

It is a natural structural material. Screws are generally used for it.

ETA Approval Types

Certified Option No	1	2	3	4	5	6	7	8	9	10	11	12
Cracked and uncracked concrete	●	●	●	●	●	●						
Only Uncracked Concrete							●	●	●	●	●	●
C20/25 C50/60 arası	●		●		●		●		●		●	
Only C20/25		●		●		●		●		●		●
Single Load Calculation			●	●	●	●			●	●	●	●
Multi-Directional Load Capability	●	●					●	●				
Large Axis Spacing*	●	●	●	●	●	●	●	●	●	●	●	●
Reducible Axis Spacing	●	●	●	●			●	●	●	●		
Large Edge Distance	●	●	●	●	●	●	●	●	●	●	●	●
Reducible Edge Distance	●	●	●	●			●	●	●	●		

* Axis Spacing: Distance Between Two Anchors

** Edge Distance: The Distance of the Anchor from the Concrete Edge



Chemical Anchors

Heavy Duty Anchors

General Purpose Fasteners

Frame Anchors

Aerated Concrete Anchors

Drywall Anchors

Nailing Systems

Insulation Anchors

Screws

Drill Bits

Scaffold Fasteners

Solar System Fasteners

Special Fixing



INFO



- Chemical Anchors
- Heavy Duty Anchors
- General Purpose Fasteners
- Frame Anchors
- Aerated Concrete Anchors
- Drywall Anchors
- Nailing Systems
- Insulation Anchors
- Screws
- Drill Bits
- Scaffold Fasteners
- Solar System Fasteners
- Special Fixing

PRODUCTS		BASE MATERIALS												
		PAGE												
PRO-500 PLUS		10	●	●	●	○	●	●	○	○	○	○	○	○
PRO-X5		12	●	●	●	○	●	●	○	○	○	○	○	○
PRO-200 PLUS		14	●	●	●	○	●	●	○	○	○	○	○	○
PRO-200		16	●	●	●	○	●	●	○	○	○	○	○	○
EVO-900 PLUS		18	●	○	●	○	●	●	○	○	○	○	○	○
EVO 500+		20	●	○	●	○	●	●	○	○	○	○	○	○
PRO-ONE		22	●	○	○	○	○	○	○	○	○	○	○	○
ECMI		23	○	○	○	○	○	○	○	○	○	○	○	○
ECM		24	○	○	○	○	○	○	○	○	○	○	○	○
ECR		27	○	○	○	○	○	○	○	○	○	○	○	○
ECS		31	○	○	○	○	○	○	○	○	○	○	○	○
ECH		33	○	○	○	○	○	○	○	○	○	○	○	○
ECZ		34	○	○	○	●	○	●	●	○	○	○	○	○
HKD-HKP-HKT		35	○	○	○	○	○	○	○	○	○	○	○	○
VCS 2		36	●	●	●	●	●	○	○	○	●	○	○	○
VTC 4 SEISMIC		38	●	●	●	○	○	○	○	○	○	○	○	○
VTC-ETA1		40	●	●	●	○	○	○	○	○	○	○	○	○
VTC-3 SEISMIC A4 FMC		42	●	●	●	○	○	○	○	○	○	○	○	○
VTC-A4		44	●	○	●	○	○	○	○	○	○	○	○	○
VTC-A2		46	●	○	●	○	○	○	○	○	○	○	○	○
KTA		48	●	○	●	○	○	○	○	○	○	○	○	○





PRODUCTS			BASE MATERIALS										
		PAGE											
FM-ATS		50	●	●	●	○	○	○	○	○	○	○	○
SMZ		53	●	○	●	○	○	○	○	○	○	○	○
SIA		54	●	○	●	○	○	○	○	○	○	○	○
CLE		56	●	○	○	○	○	○	○	○	○	○	○
LZS		57	●	○	○	○	○	○	○	○	○	○	○
SM		58	●	○	●	●	●	●	●	●	○	○	○
GL		61	●	○	●	●	●	●	●	●	○	○	○
GBU		63	●	○	●	●	●	●	●	●	○	○	○
BFIX		64	●	○	●	●	●	●	●	●	●	●	●
TJC		66	●	○	●	●	●	●	●	●	○	○	○
EMR		68	●	○	●	●	●	●	●	●	○	○	○
BMA		69	●	○	●	●	●	○	○	○	○	○	○
SVF		70	●	○	●	●	●	●	●	○	○	○	○
GBM		74	○	○	○	○	○	○	○	○	●	○	○
GBK		75	○	○	○	○	○	○	○	○	●	○	○
HTM		76	○	○	○	●	○	○	○	●	○	●	●
HTZ		78	○	○	○	●	○	○	○	●	○	●	●
HX-5		80	○	○	○	○	○	○	○	○	●	●	●
FX-MAX		81	○	○	○	●	○	○	○	●	○	●	●
GLK		82	○	○	○	○	○	○	○	○	○	●	○
FX-40		84	●	○	●	●	●	○	○	○	○	○	○

Chemical Anchors

Heavy Duty Anchors

General Purpose Fasteners

Frame Anchors

Aerated Concrete Anchors

Drywall Anchors

Nailing Systems

Insulation Anchors

Screws

Drill Bits

Scaffold Fasteners

Solar System Fasteners

Special Fixing



INFO



- Chemical Anchors
- Heavy Duty Anchors
- General Purpose Fasteners
- Frame Anchors
- Aerated Concrete Anchors
- Drywall Anchors
- Nailing Systems
- Insulation Anchors
- Screws
- Drill Bits
- Scaffold Fasteners
- Solar System Fasteners
- Special Fixing

PRODUCTS			BASE MATERIALS											
		PAGE												
GSS		85	●	○	●	●	●	○	○	○	○	○	○	○
GSX		85	●	○	●	●	●	○	○	○	○	○	○	○
GSP		86	●	○	●	●	●	○	○	○	○	○	○	○
GSP-X		86	●	○	●	●	●	○	○	○	○	○	○	○
GS		87	○	○	○	○	○	○	○	○	○	○	○	○
CKB		87	○	○	○	○	○	○	○	○	○	○	○	○
DN		87	●	○	●	●	●	○	○	○	○	○	○	○
NK		88	●	○	●	●	●	○	○	○	○	○	○	○
PTS		89	○	○	○	○	○	○	○	○	○	○	○	○
FX-120 IE		90	●	○	●	●	●	○	○	○	○	○	○	○
IE		91	●	○	●	●	●	○	○	○	○	○	○	○
MET II		92	●	○	●	●	●	●	●	●	○	○	○	○
YMD		93	○	○	○	○	○	○	○	○	○	○	○	○
TSC		94	○	○	○	○	○	○	○	○	○	○	○	●
HAN		95	○	○	○	○	○	○	○	○	○	○	○	●
VBM-T		96	○	○	○	○	○	○	○	○	○	○	○	○
VBM-P		97	○	○	○	○	○	○	○	○	○	○	○	○
KÄFT		98	●	●	●	●	●	●	●	●	●	●	●	●
PRO-X3		99	●	●	●	●	●	●	●	●	●	●	●	●
RUNNER		100	●	●	●	●	●	●	●	●	●	●	●	●
SFA		102	●	○	●	○	○	○	○	○	○	○	○	○



PRODUCTS		PAGE	BASE MATERIALS										
SFB		103	<input type="checkbox"/>	<input type="checkbox"/>	<input type="checkbox"/>	<input type="checkbox"/>	<input type="checkbox"/>	<input type="checkbox"/>	<input type="checkbox"/>	<input type="checkbox"/>	<input type="checkbox"/>	<input type="checkbox"/>	<input type="checkbox"/>
SOLAR SYSTEM		104	<input type="checkbox"/>	<input type="checkbox"/>	<input type="checkbox"/>	<input type="checkbox"/>	<input type="checkbox"/>	<input type="checkbox"/>	<input type="checkbox"/>	<input type="checkbox"/>	<input type="checkbox"/>	<input type="checkbox"/>	<input type="checkbox"/>
SLFS		106	<input type="checkbox"/>	<input type="checkbox"/>	<input type="checkbox"/>	<input type="checkbox"/>	<input type="checkbox"/>	<input type="checkbox"/>	<input type="checkbox"/>	<input type="checkbox"/>	<input type="checkbox"/>	<input type="checkbox"/>	<input type="checkbox"/>
SLFV		107	<input type="checkbox"/>	<input type="checkbox"/>	<input type="checkbox"/>	<input type="checkbox"/>	<input type="checkbox"/>	<input type="checkbox"/>	<input type="checkbox"/>	<input type="checkbox"/>	<input type="checkbox"/>	<input type="checkbox"/>	<input type="checkbox"/>
IP		108	<input type="checkbox"/>	<input type="checkbox"/>	<input type="checkbox"/>	<input type="checkbox"/>	<input type="checkbox"/>	<input type="checkbox"/>	<input type="checkbox"/>	<input type="checkbox"/>	<input type="checkbox"/>	<input type="checkbox"/>	<input type="checkbox"/>
KF		109	<input type="checkbox"/>	<input type="checkbox"/>	<input type="checkbox"/>	<input type="checkbox"/>	<input type="checkbox"/>	<input type="checkbox"/>	<input type="checkbox"/>	<input type="checkbox"/>	<input type="checkbox"/>	<input type="checkbox"/>	<input type="checkbox"/>
CBT		110	<input type="checkbox"/>	<input type="checkbox"/>	<input type="checkbox"/>	<input type="checkbox"/>	<input type="checkbox"/>	<input type="checkbox"/>	<input type="checkbox"/>	<input type="checkbox"/>	<input type="checkbox"/>	<input type="checkbox"/>	<input type="checkbox"/>
RSP		112	<input type="checkbox"/>	<input type="checkbox"/>	<input type="checkbox"/>	<input type="checkbox"/>	<input type="checkbox"/>	<input type="checkbox"/>	<input type="checkbox"/>	<input type="checkbox"/>	<input type="checkbox"/>	<input type="checkbox"/>	<input type="checkbox"/>

Chemical Anchors

Heavy Duty Anchors

General Purpose Fasteners

Frame Anchors

Aerated Concrete Anchors

Drywall Anchors

Nailing Systems

Insulation Anchors

Screws

Drill Bits

Scaffold Fasteners

Solar System Fasteners

Special Fixing





Chemical Anchors

PRO-500 Plus Seismic

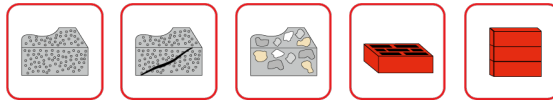
Pure Epoxy Chemical Anchor

Main Material

- Concrete
- Cracked Concrete
- Natural Stone
- Hollow Brick
- Solid Brick

Application Field

- Nuclear Power Plant Projects
- Structural Connections
- Seismic Connections
- Steel Structures
- Expansion Joints
- Post Installed Rebar Connections
- Reinforcement
- Dams
- Warehouse Shelf Fixings
- Power Plants
- Machines
- Cantilevers
- Facade Anchors
- Rail Systems
- Warehouses



- Seismic certified
- Post Installed Rebar Connections Certified
- Designed for Heavy and Medium Loads
- Pure Epoxy
- Suitable for Use in Dry, Wet, and Water-Filled Holes
- Styrene Free
- Usable in Short Edge Distances Due to Non-Expansion Anchoring
- Reusable by Replacing the Mixing Tip During Partial Use
- Recommended For Use with sleeves in Hollow Wall Materials
- Applicable in Holes Created by Core Drilling

Heavy Duty Anchors

General Purpose Fasteners

Frame Anchors

Aerated Concrete Anchors

Drywall Anchors

Nailing Systems

Insulation Anchors

Screws

Drill Bits

Scaffold Fasteners

Solar System Fasteners

Special Fixing



PRO-500 Plus Seismic

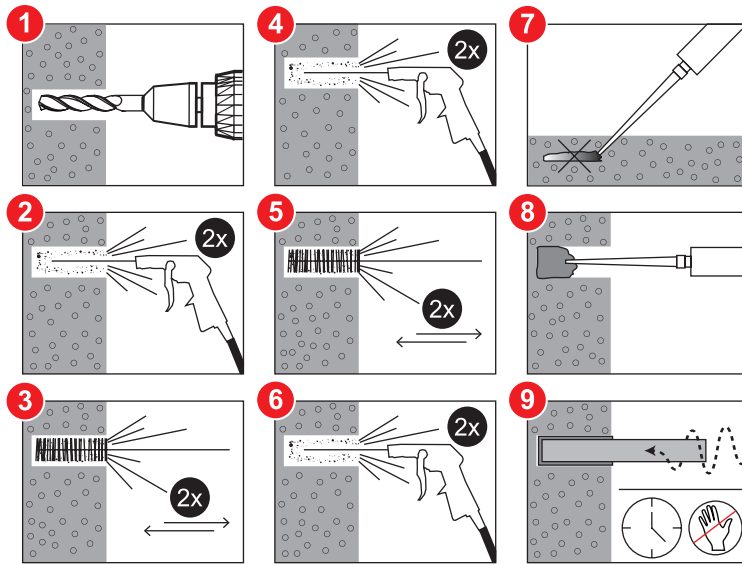
Technical Information

Cartridge Temperature	T Work	T Load
+0 to +4°C	90	144
+5 to +9°C	80	48
+10 to +14°C	60	28
+15 to +19°C	40	18
+20 to +24°C	30	12
+25 to +34°C	12	9
+35 to +39°C	8	6
+40°C	8	4



Complementary Products





Product	Art. No.	Cartridge Volume	Application Gun	Qty Per Box
PRO-500 Plus Seismic 585 ml	65521	585 ml	HKD 51	12



Product	Art. No.	Suitable Cartridge	Material
HKD 51	66007	585ml 3:1 Side to side	Metal



Product	Art. No.	Suitable Cartridge
MIXER	66022	Pro-500 Plus Seismic



Product	Art. No.
HKP 1	66010

PRO-500 Plus Seismic

Application

PRO-500 Plus Seismic

Technical Information

HKD 51

Accessory

MIXER

Accessory

HKP 1

Accessory



Chemical Anchors

Heavy Duty Anchors

General Purpose Fasteners

Frame Anchors

Aerated Concrete Anchors

Drywall Anchors

Nailing Systems

Insulation Anchors

Screws

Drill Bits

Scaffold Fasteners

Solar System Fasteners

Special Fixing





Chemical Anchors

PRO-X5 Seismic

Pure Epoxy Chemical Anchor

Main Material

- Concrete
- Cracked Concrete
- Natural Stone
- Hollow Brick
- Solid Brick

Application Field

- Structural Connections
- Seismic Connections
- Steel Structures
- Expansion Joints
- Post Installed Rebar Connections
- Reinforcement
- Dams
- Power Plants
- Machines
- Cantilevers
- Facade Anchors
- Rail Systems
- Warehouse Rackings



PRO-X5 Seismic

Technical Information

Complementary Products



page 98



page 35



page 24



page 27



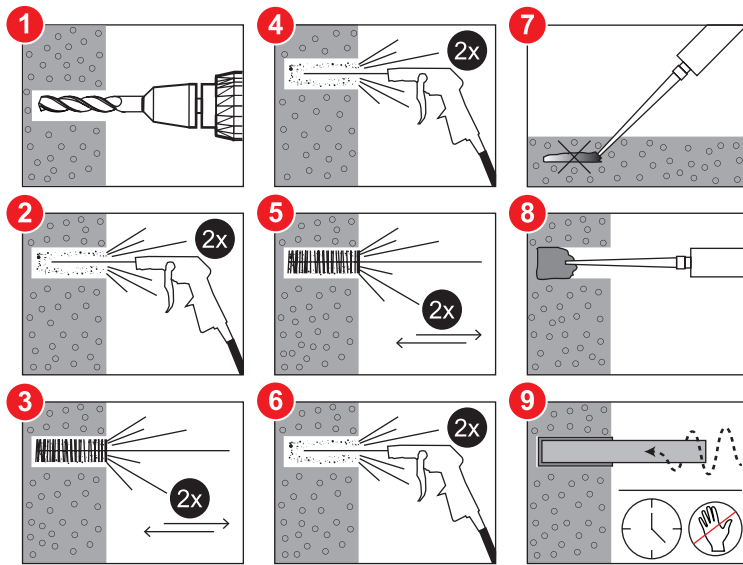
page 34



- Seismic certified
- Post Installed Rebar Connections Certified
- Designed for Heavy and Medium Loads
- Pure Epoxy
- Suitable for Use in Dry, Wet, and Water-Filled Holes
- Styrene Free
- Usable in Short Edge Distances Due to Non-Expansion Anchoring
- Reusable by Replacing the Mixing Tip During Partial Use
- Applicable in Holes Created by Core Drilling

Cartridge Temperature	T work (minutes)	T Load (hours)
+5,+10 °C	20	24
+10,+15 °C	20	12
+15,+20 °C	15	8
+20,+25 °C	11	7
+25,+30 °C	8	6
+30,+35 °C	6	5
+35,+40 °C	4	4
+40 °C	3	3





Product	Art. No.	Cartridge Volume	Application Gun	Qty Per Box
PRO X5 Seismic 600 ml	65501	600 ml	HKD 31	12



Product	Art. No.	Suitable Cartridge	Material
HKD 31	66003	600ml 1:1 Side by Side	Metal



Product	Art. No.	Suitable Cartridge
MIXER	66021	Pro-X5 Seismic



Product	Art. No.
HKP 1	66010

PRO-X5 Seismic

Application

PRO-X5 Seismic

Technical Information

HKD 31

Accessory

MIXER

Accessory

HKP 1

Accessory



Chemical Anchors

Heavy Duty Anchors

General Purpose Fasteners

Frame Anchors

Aerated Concrete Anchors

Drywall Anchors

Nailing Systems

Insulation Anchors

Screws

Drill Bits

Scaffold Fasteners

Solar System Fasteners

Special Fixing



- Chemical Anchors
- Heavy Duty Anchors
- General Purpose Fasteners
- Frame Anchors
- Aerated Concrete Anchors
- Drywall Anchors
- Nailing Systems
- Insulation Anchors
- Screws
- Drill Bits
- Scaffold Fasteners
- Solar System Fasteners
- Special Fixing

PRO-200 Plus Seismic

Hybrid Chemical Anchor

Main Material

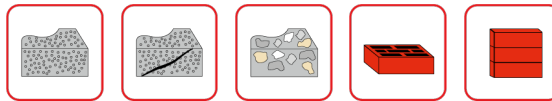
- Concrete
- Cracked Concrete
- Natural Stone
- Hollow Brick
- Solid Brick

Application Field

- Structural Connections
- Seismic Connections
- Steel Structures
- Machines
- Facade Anchors
- Reinforcement
- Rail Systems
- Cantilevers
- Warehouse Rackings

PRO-200 Plus Seismic






Technical Information

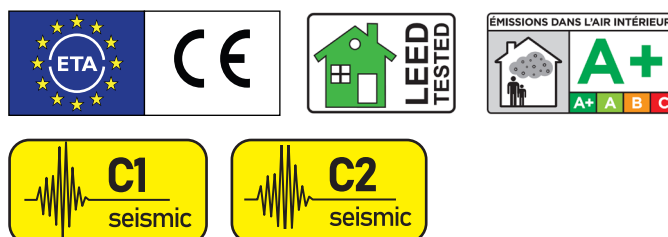


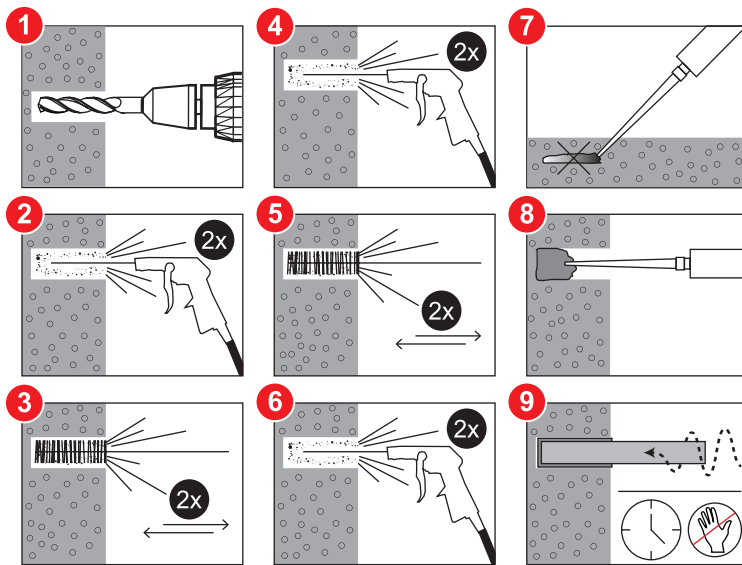
- ETA Option 1 Certified – Suitable for cracked and uncracked concrete
- Seismic Certified
- Post Installed Rebar Connections Certified
- For Heavy and Medium Loads
- Usable in Short Edge Distances Due to Non-Expansion Anchoring
- Usable in Dry, Wet, and Water-Filled Holes
- Styrene Free
- Time-Efficient with Rapid Setting
- Reusable With a Replaceable Mixing Tip
- Used with Sieve for Hollow Wall Materials

Vesta PRO-200 Plus Seismic		
Cartridge Temperature	T work (minutes)	T Load
-5,-1 °C	50	5 h
0,+4 °C	25	3,5 h
+5,+9 °C	15	2 h
+10,+14 °C	10	1 h
+15,+19 °C	6	40 min
+20,+29 °C	3	30 min
+30,+40 °C	2	30 min

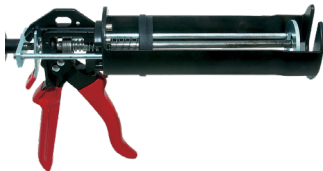
Complementary Products

-  [page 98](#)
-  [page 35](#)
-  [page 24](#)
-  [page 27](#)
-  [page 34](#)





Product	Art. No.	Cartridge Volume	Application Gun	Qty Per Box
PRO-200 Plus Seismic 410+10ml	64411	420 ml	HKD 21	12



Product	Art. No.	Cartridge Type	Material
HKD 21	66002	380 ml, 420 ml Coaxial	Metal



Product	Art. No.	Cartridge Type
MIXER	66020	Pro-200 Plus Seismic



Product	Art. No.
HKP 1	66010

PRO-200 Plus Seismic

Application

PRO-200 Plus Seismic

Technical Information

HKD 21

Accessory

MIXER

Accessory

HKP 1

Accessory



Chemical Anchors

Heavy Duty Anchors

General Purpose Fasteners

Frame Anchors

Aerated Concrete Anchors

Drywall Anchors

Nailing Systems

Insulation Anchors

Screws

Drill Bits

Scaffold Fasteners

Solar System Fasteners

Special Fixing



- Chemical Anchors
- Heavy Duty Anchors
- General Purpose Fasteners
- Frame Anchors
- Aerated Concrete Anchors
- Drywall Anchors
- Nailing Systems
- Insulation Anchors
- Screws
- Drill Bits
- Scaffold Fasteners
- Solar System Fasteners
- Special Fixing

PRO-200 Seismic

Vinylester Chemical Anchor

Main Material

- Concrete
- Cracked Concrete
- Naturel Stone
- Hollow Brick
- Solid Brick

Application Field






- Structural Connections
- Seismic Connections
- Steel Structures
- Machines
- Facade Anchors
- Reinforcement
- Rail Systems
- Cantilevers
- Warehouse Rackings

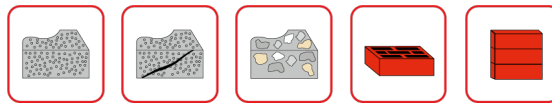
PRO-200 Seismic

Technical Information



Complementary Products

-  [page 98](#)
-  [page 35](#)
-  [page 24](#)
-  [page 27](#)
-  [page 34](#)



- ETA Option 1 Certified – Suitable for cracked and uncracked concrete
- Seismic Certified
- Post Installed Rebar Connections Certified
- For Heavy and Medium Loads
- Usable in Dry, Wet, and Water-Filled Holes
- Styrene Free
- Usable in Short Edge Distances Due to Non-Expansion Anchoring
- Time-Efficient with Rapid Setting
- Reusable With a Replaceable Mixing Tip
- Summer Version for High Temperatures, Ensures Faster Setting
- Winter Version for Low Temperatures, Provides Slower Setting
- Winter Version Usable in Cold Weather Down to -10°C
- Used with Sieve for Hollow Wall Materials

Vesta PRO-200 Seismic

Cartridge Temperature	T work (minutes)	T Load (minutes)
+5,+10 °C	10	145
+10,+15 °C	8	85
+15,+20 °C	6	75
+20,+25 °C	5	50
+25,+30 °C	4	40

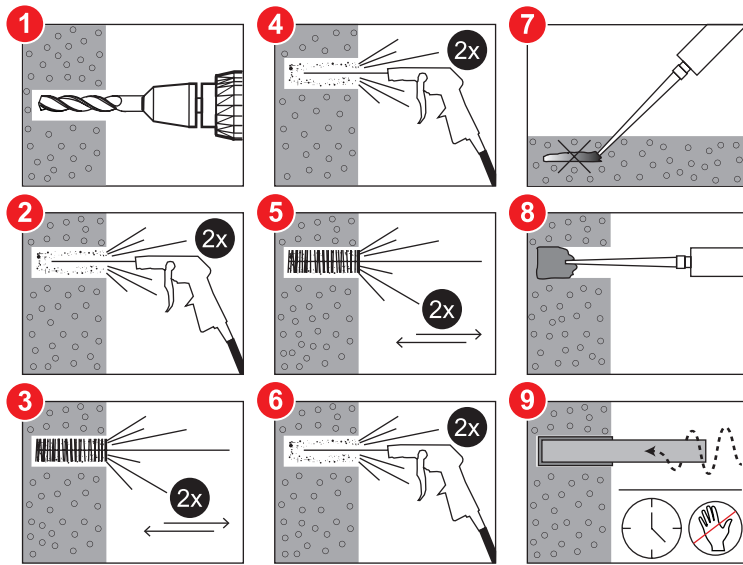
Vesta PRO-200 Seismic Summer

Cartridge Temperature	T work (minutes)	T Load (minutes)
-10,-5 °C	50	12 (Saat)
-5, 0 °C	15	100
+0,+5 °C	10	75
+5,+20 °C	5	50
+20 °C	2	20

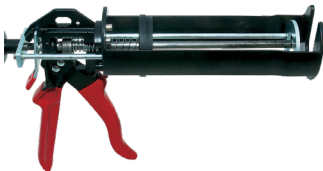
Vesta PRO-200 Seismic Winter

Cartridge Temperature	T work (minutes)	T Load (minutes)
+15,+20 °C	15	5 (Saat)
+20,+25 °C	10	145
+25,+30 °C	7,5	85
+30,+35 °C	5	50
+35,+40 °C	3,5	40





Product	Art. No.	Cartridge Volume	Application Gun	Qty Per Box
PRO-200 Seismic 410+10ml	64401	420 ml	HKD 21	12
PRO-200 Seismic Summer 410+10ml	64402	420 ml	HKD 21	12
PRO-200 Seismic Winter 410+10ml	64403	420 ml	HKD 21	12



Product	Art. No.	Cartridge Type	Material
HKD 21	66002	380 ml, 420 ml Coaxial	Metal



Product	Art. No.	Cartridge Type
MIXER	66020	Pro-200 Seismic



Product	Art. No.
HKP 1	66010

PRO-200 Seismic

Application

PRO-200 Seismic

Technical Information

HKD 21

Accessory

MIXER

Accessory

HKP 1

Accessory



Chemical Anchors

Heavy Duty Anchors

General Purpose Fasteners

Frame Anchors

Aerated Concrete Anchors

Drywall Anchors

Nailing Systems

Insulation Anchors

Screws

Drill Bits

Scaffold Fasteners

Solar System Fasteners

Special Fixing





Chemical Anchors

EVO-900 Plus

Epoxy Acrylate Chemical Anchor

Heavy Duty Anchors

Main Material

- Concrete
- Natural Stone
- Hollow Brick
- Solid Brick
- Aerated Concrete

General Purpose Fasteners

Frame Anchors

Application Field

- Warehouse Rackings
- Steel Structure
- Fences
- Billboards
- Cantilevers
- Facades

Aerated Concrete Anchors

Drywall Anchors

Nailing Systems

EVO-900 Plus

Technical Information

Insulation Anchors

Screws



Drill Bits

Complementary Products



page 98



page 35



page 24

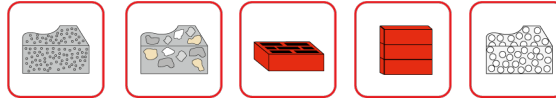


page 27



page 34

Special Fixing



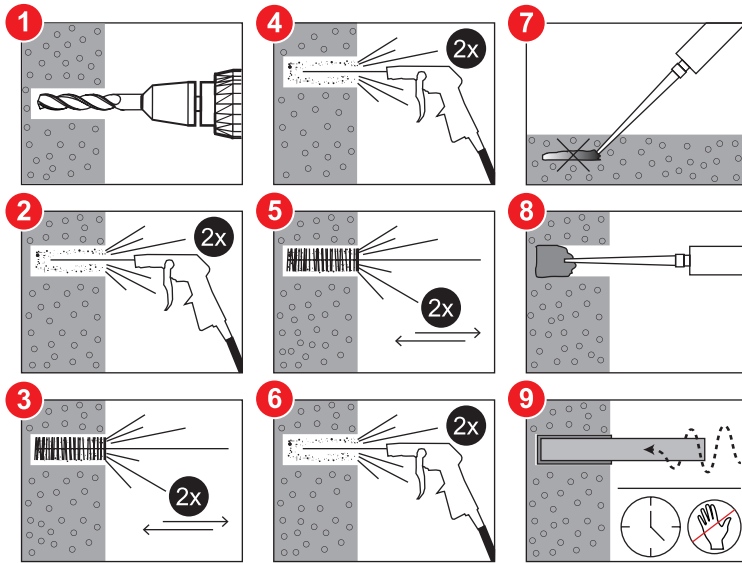
- For Heavy and Medium Loads
- Usable in Dry, Wet, and Water-Filled Holes
- Time-Efficient with Rapid Setting
- Reusable by Replacing the Mixing Tip When Partially Used
- Used with Sieve for Hollow Wall Materials
- Usable in Short Edge Distances Due to Non-Expansion Anchoring
- Summer Version for High Temperatures, Ensures Faster Setting
- Winter Version for Low Temperatures, Provides Slower Setting

Cartridge Temperature	T work (minutes)	T Load (minutes)
+0 °C,+5 °C	45 min	3h min
+5 °C,+9 °C	25 min	2h min
+10 °C,+14 °C	20 min	100 min
+15 °C,+19 °C	15 min	80 min
+20 °C,+29 °C	6 min	45 min
+30 °C,+34 °C	4 min	25 min
+35 °C,+39 °C	2 min	20 min

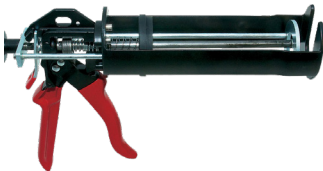
Vesta EVO-900 Plus Summer		
Cartridge Temperature	T work (minutes)	T Load (minutes)
+10 °C,+14 °C	30 min	5h
+15 °C,+19 °C	20 min	210 min
+20 °C,+29 °C	15 min	145 min
+30 °C,+34 °C	10 min	80 min
+35°C,+39 °C	6 min	45 min
+40°C,+44 °C	4 min	25 min
+45°C	2 min	20 min

Vesta EVO-900 Plus Winter		
Cartridge Temperature	T work (minutes)	T Load (minutes)
0 °C,+4 °C	25 min	120 min
+5°C, +9 °C	10 min	60 min
+10°C,+14 °C	4 min	35 min
+15°C,+19 °C	3 min	25 min
+20°C +29 °C	2 min	15 min





Product	Art. No.	Cartridge Volume	Application Gun	Qty Per Box
EVO-900 Plus 380+30ml	63301	410 ml	HKD 21	12
EVO-900 Plus Summer 380+30ml	63302	410 ml	HKD 21	12
EVO-900 Plus Winter 380+30ml	63303	410 ml	HKD 21	12



Product	Art. No.	Cartridge Type	Material
HKD 21	66002	380 ml, 420 ml Coaxial 10:1	Metal / Metal



Product	Art. No.	Cartridge Type
MIXER	66020	EVO-900 Plus



Product	Art. No.
HKP 1	66010

EVO-900 Plus

Application

EVO-900 Plus

Technical Information

HKD 21

Accessory

MIXER

Accessory

HKP 1

Accessory

Complementary Products



Chemical Anchors

Heavy Duty Anchors

General Purpose Fasteners

Frame Anchors

Aerated Concrete Anchors

Drywall Anchors

Nailing Systems

Insulation Anchors

Screws

Drill Bits

Scaffold Fasteners

Solar System Fasteners

Special Fixing





Chemical Anchors

EVO-500 +

Polyester Chemical Anchor

Heavy Duty Anchors

Main Material

- Concrete
- Natural Stone
- Hollow Brick
- Solid Brick

General Purpose Fasteners

Application Field

- Warehouse Rackings
- Steel Structure
- Fences
- Billboards
- Cantilevers
- Facades

Frame Anchors

Aerated Concrete Anchors

Drywall Anchors

EVO-500 +

Technical Information

Nailing Systems

Insulation Anchors



Screws

Drill Bits

Scaffold Fasteners

Complementary Products



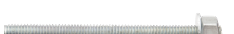
[page 98](#)



[page 35](#)



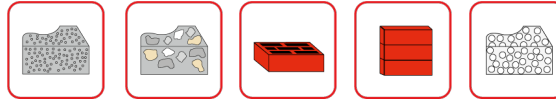
[page 24](#)



[page 27](#)



[page 34](#)



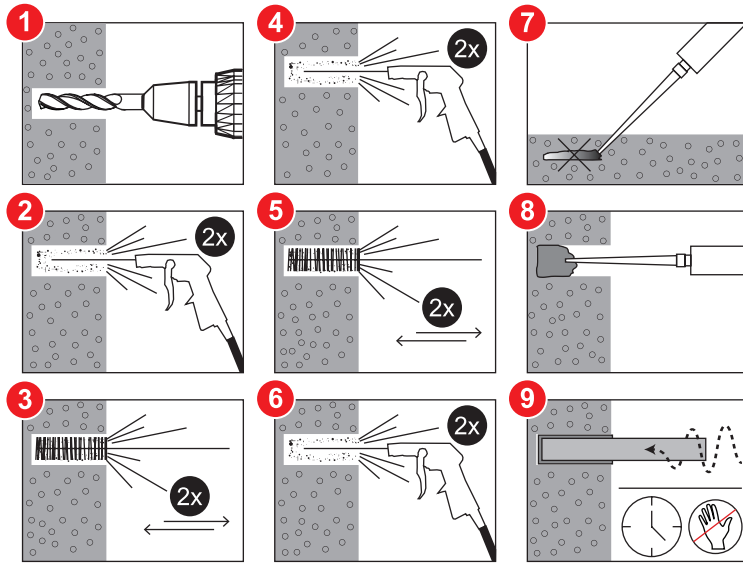
- Can be used in dry, wet, and water-filled holes.
- The fast-setting formula saves time.
- It can be reused by changing the mixer tip when partially used.
- Compatible with hollow wall materials when used with a sieve.
- Usable in Short Edge Distances Due to Non-Expansion Anchoring
- Summer Version for High Temperatures, Ensures Faster Setting
- Winter Version for Low Temperatures, Provides Slower Setting

Vesta Evo-500 +		
Cartridge Temperature	T work (minutes)	T Load (minutes)
min +5 °C	18	145
+5,+10 °C	10	145
+10,+20 °C	6	85
+20,+25 °C	5	50
+25,+30 °C	4	40
+30 °C	4	35

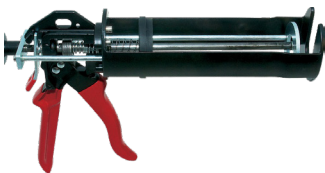
Vesta Evo-500 + Winter		
Cartridge Temperature	T work (minutes)	T Load (minutes)
min +5 °C	5	4 hours
min +5 °C	5	125
+5, +10 °C	3,5	60
+10,+20 °C	2	40
+20,+25 °C	1,5	20
+25,+30 °C	1	15
+30 °C	1	10

Vesta Evo-500 + Summer		
Cartridge Temperature	T work (minutes)	T Load (minutes)
min +10°C	30	5 hours
+10,+20 °C	15	5 hours
+20,+25 °C	10	145
+25,+30 °C	7,5	85
+30,+35 °C	5	50
+35,+40 °C	3,5	40
+40,+45 °C	2,5	35
+45 °C	2,5	12





Product	Art. No.	Cartridge Volume	Application Gun	Qty Per Box
Vesta Evo-500 + 380+30ml	62211	420 ml	HKD 21	12
Vesta Evo-500 + Summer 380+30ml	62212	420 ml	HKD 21	12
Vesta Evo-500 + +Winter 380+30ml	62213	420 ml	HKD 21	12



Product	Art. No.	Cartridge Type	Material
HKD 21	66002	Coaxial	Metal / Metal



Product	Art. No.	Cartridge Type
MIXER	66020	Pro-200 Seismic



Product	Art. No.
HKP 1	66010

EVO-500 +

Application

EVO-500 +

Cartridge - Dispenser

HKD 21

Accessory

MIXER

Accessory

HKP 1

Accessory



Chemical Anchors

Heavy Duty Anchors

General Purpose Fasteners

Frame Anchors

Aerated Concrete Anchors

Drywall Anchors

Nailing Systems

Insulation Anchors

Screws

Drill Bits

Scaffold Fasteners

Solar System Fasteners

Special Fixing





Chemical Anchors

PRO-ONE

Spinning Capsule

Heavy Duty Anchors

Main Material

- Concrete

General Purpose Fasteners

Application Field

- Warehouse Rackings
- Steel Structure
- Machines
- Facades
- Cantilevers

Frame Anchors

Aerated Concrete Anchors

PRO-ONE

Application

Drywall Anchors

Nailing Systems

Insulation Anchors



Screws

PRO-ONE

Technical Information

Drill Bits

Scaffold Fasteners

Solar System Fasteners

Special Fixing



Complementary Products



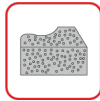
page 98



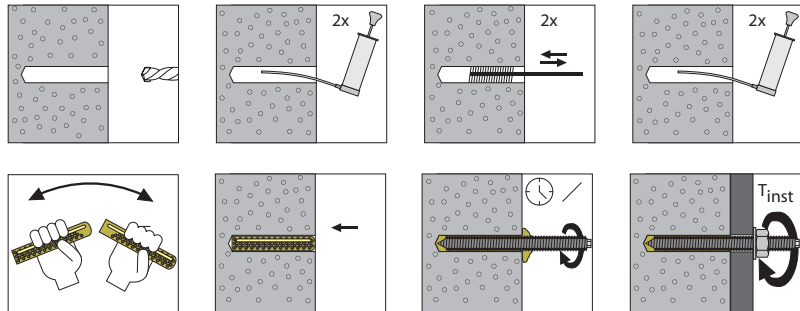
page 35



page 24

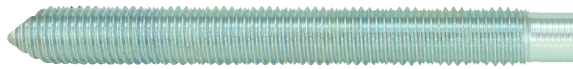


- Can be used in short distances due to not fully expanded anchor.
- Fast Installation
- Highly efficient for low-Qty usage
- Can be used in core drilled holes



Product	Art. No.	Hole Diameter	Hole Depth	Threaded Rod ECM	T _{inst}	Qty Per Box
PRO-ONE 8	61019	10	80	M8	10	10
PRO-ONE 10	61029	12	90	M10	20	10
PRO-ONE 12	61039	14	110	M12	40	10
PRO-ONE 12 L	61038	14	165	M12	40	10
PRO-ONE 14	61049	16	120	M14	60	10
PRO-ONE 16	61059	18	125	M16	80	10
PRO-ONE 16 L	61058	18	190	M16	80	10
PRO-ONE 20	61069	22	170	M20	120	10
PRO-ONE 20 L	61068	22	255	M20	120	10
PRO-ONE 22	61079	24	190	M22	135	10
PRO-ONE 24	61089	26	210	M24	150	5
PRO-ONE 24 L	61088	26	315	M24	150	5
PRO-ONE 30	61099	32	280	M30	300	5





- Types available as zinc plated, zinc flake, HDG, 5.8, 8.8, 10.9, A2 and A4 Stainless Steel, HCR, Titanium alloy.
- The V-shaped end of the rotor ensures homogeneous mixing of chemicals in glass tubes

Product	Art. No.	Rod Diameter	Rod Length	Inner Thread	Inner Thread Depth	Hole Diameter	Spinning Capsule	Qty Per Box
ECMI M5	61102	8	80	M5	35	10	PRO-ONE M8	10
ECMI M6	61103	10	80	M6	35	12	PRO-ONE M10	10
ECMI M8	61104	12	95	M8	45	14	PRO-ONE M12	10
ECMI M10	61105	14	95	M10	45	16	PRO-ONE M14	10
ECMI M12	61101	16	160	M12	50	18	PRO-ONE M16	10
ECMI M14	61106	20	160	M14	60	22	PRO-ONE M20	10
ECMI M16	61107	22	175	M16	60	24	PRO-ONE M24	10
ECMI M20	61108	30	230	M20	70	32	PRO-ONE M30	5

Product	Art. No.	Rod Diameter	Rod Length	Inner Thread	Inner Thread Depth	Hole Diameter	Spinning Capsule	Qty Per Box
ECMI-A4 M5	61002	8	80	M5	35	10	PRO-ONE M8	10
ECMI-A4 M6	61003	10	80	M6	35	12	PRO-ONE M10	10
ECMI-A4 M8	61004	12	95	M8	45	14	PRO-ONE M12	10
ECMI-A4 M10	61005	14	95	M10	45	16	PRO-ONE M14	10
ECMI-A4 M12	61001	16	160	M12	50	18	PRO-ONE M16	10
ECMI-A4 M14	61006	20	160	M14	60	22	PRO-ONE M20	10
ECMI-A4 M16	61007	22	175	M16	60	24	PRO-ONE M24	10
ECMI-A4 M20	61008	30	230	M20	70	32	PRO-ONE M30	5

ECMI

Internal Threaded Chemical Anchor Rod

ECMI

Zinc Plated

ECMI-A4

Stainless Steel

Complementary Products



page 10



page 14



page 22



page 99



Chemical Anchors

Heavy Duty Anchors

General Purpose Fasteners

Frame Anchors

Aerated Concrete Anchors

Drywall Anchors

Nailing Systems

Insulation Anchors

Screws

Drill Bits

Scaffold Fasteners

Solar System Fasteners

Special Fixing





Chemical Anchors

ECM

Chemical Anchor Rod

Heavy Duty Anchors

General Purpose Fasteners

ECM

Features

Frame Anchors

Aerated Concrete Anchors

ECM

Zinc Plated

Drywall Anchors

Nailing Systems

Insulation Anchors

Screws

Drill Bits

Complementary Products



page 10



page 12



page 14

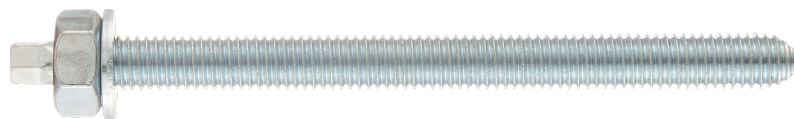


page 22

Scaffold Fasteners

Solar System Fasteners

Special Fixing



- Types available as zinc plated, zinc flake, HDG, 5.8, 8.8, 10.9, A2 and A4 Stainless Steel, HCR, Titanium alloy.
- The V shape at the tip of the rod ensures homogeneous mixing of chemicals in glass tubes.
- The hexagonal socket at the back of the rod allows for installation by rotating it with a drill or cordless tool.

Product	Art. No.	Grade	Wrench Size	Qty Per Box
ECM 8x110	61111	5.8	13	10
ECM 8x150	61112	5.8	13	10
ECM 8x250	61113	5.8	13	10
ECM 10x130	61121	5.8	17	10
ECM 10x165	61122	5.8	17	10
ECM 10x190	61123	5.8	17	10
ECM 10x250	61124	5.8	17	10
ECM 10x350	61125	5.8	17	10
ECM 12x160	61131	5.8	19	10
ECM 12x220	61132	5.8	19	10
ECM 12x250	61133	5.8	19	10
ECM 12x300	61134	5.8	19	10
ECM 12x380	61135	5.8	19	10
ECM 14x170	61141	5.8	22	10
ECM 16x165	61151	5.8	24	10
ECM 16x190	61152	5.8	24	10
ECM 16x250	61153	5.8	24	10
ECM 16x300	61154	5.8	24	5
ECM 16x380	61155	5.8	24	5
ECM 16x500	61156	5.8	24	5
ECM 20x260	61161	5.8	30	5
ECM 20x350	61162	5.8	30	5
ECM 20x500	61163	5.8	30	5
ECM 24x300	61171	5.8	36	5
ECM 24x400	61172	5.8	36	5
ECM 24x600	61173	5.8	36	5
ECM 27x340	61181	5.8	41	5
ECM 30x380	61191	5.8	46	5
ECM 30x500	61192	5.8	46	5



ECM-HDG

Hot dip galvanized

Product	Art. No.	Grade	Wrench Size	Qty Per Box
ECM-HDG 8x110	61911	5.8	13	10
ECM-HDG 8x150	61912	5.8	13	10
ECM-HDG 8x250	61913	5.8	13	10
ECM-HDG 10x130	61921	5.8	17	10
ECM-HDG 10x165	61922	5.8	17	10
ECM-HDG 10x190	61923	5.8	17	10
ECM-HDG 10x250	61924	5.8	17	10
ECM-HDG 10x350	61925	5.8	17	10
ECM-HDG 12x160	61931	5.8	19	10
ECM-HDG 12x220	61932	5.8	19	10
ECM-HDG 12x250	61933	5.8	19	10
ECM-HDG 12x300	61934	5.8	19	10
ECM-HDG 12x380	61935	5.8	19	10
ECM-HDG 14x170	61941	5.8	22	10
ECM-HDG 16x165	61951	5.8	24	10
ECM-HDG 16x190	61952	5.8	24	10
ECM-HDG 16x250	61953	5.8	24	10
ECM-HDG 16x300	61954	5.8	24	5
ECM-HDG 16x380	61955	5.8	24	5
ECM-HDG 16x500	61956	5.8	24	5
ECM-HDG 20x260	61961	5.8	30	5
ECM-HDG 20x350	61962	5.8	30	5
ECM-HDG 20x500	61963	5.8	30	5
ECM-HDG 24x300	61971	5.8	36	5
ECM-HDG 24x400	61972	5.8	36	5
ECM-HDG 24x600	61973	5.8	36	5
ECM-HDG 27x340	61981	5.8	41	5
ECM-HDG 30x380	61991	5.8	46	5
ECM-HDG 30x500	61992	5.8	46	5

Complementary Products



page 10



page 12



page 14



page 22

Chemical Anchors

Heavy Duty Anchors

General Purpose Fasteners

Frame Anchors

Aerated Concrete Anchors

Drywall Anchors

Nailing Systems

Insulation Anchors

Screws

Drill Bits

Scaffold Fasteners

Solar System Fasteners

Special Fixing





Chemical Anchors

ECM-A4

Stainless Steel

Heavy Duty Anchors

General Purpose Fasteners

Frame Anchors

Aerated Concrete Anchors

Drywall Anchors

Nailing Systems

Insulation Anchors

Screws

Drill Bits

Scaffold Fasteners

Solar System Fasteners

Special Fixing



Complementary Products



page 10



page 12

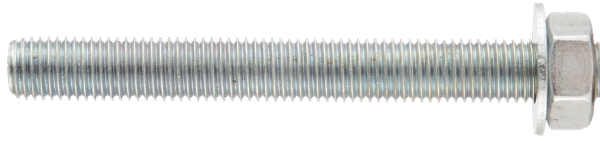


page 14



page 22

Product	Art. No.	Grade	Wrench Size	Qty Per Box
ECM-A4 8x110	61811	A4-316	13	10
ECM-A4 8x150	61812	A4-316	13	10
ECM-A4 8x250	61813	A4-316	13	10
ECM-A4 10x130	61821	A4-316	17	10
ECM-A4 10x165	61822	A4-316	17	10
ECM-A4 10x190	61823	A4-316	17	10
ECM-A4 10x250	61824	A4-316	17	10
ECM-A4 10x350	61825	A4-316	17	10
ECM-A4 12x160	61831	A4-316	19	10
ECM-A4 12x220	61832	A4-316	19	10
ECM-A4 12x250	61833	A4-316	19	10
ECM-A4 12x300	61834	A4-316	19	10
ECM-A4 12x380	61835	A4-316	19	10
ECM-A4 14x170	61841	A4-316	22	10
ECM-A4 16x165	61851	A4-316	24	10
ECM-A4 16x190	61852	A4-316	24	10
ECM-A4 16x250	61853	A4-316	24	10
ECM-A4 16x300	61854	A4-316	24	5
ECM-A4 16x380	61855	A4-316	24	5
ECM-A4 16x500	61856	A4-316	24	5
ECM-A4 20x260	61861	A4-316	30	5
ECM-A4 20x350	61862	A4-316	30	5
ECM-A4 20x500	61863	A4-316	30	5
ECM-A4 24x300	61871	A4-316	36	5
ECM-A4 24x400	61872	A4-316	36	5
ECM-A4 24x600	61873	A4-316	36	5
ECM-A4 27x340	61881	A4-316	41	5
ECM-A4 30x380	61891	A4-316	46	5
ECM-A4 30x500	61892	A4-316	46	5



- Types available as zinc plated, zinc flake, HDG, 5.8, 8.8, 10.9, A2 and A4 Stainless Steel, HCR, Titanium alloy.

Product	Art. No.	Grade	Wrench Size	Qty Per Box
ECR 8x110	61211	5.8	13	10
ECR 8x150	61212	5.8	13	10
ECR 8x250	61213	5.8	13	10
ECR 10x130	61221	5.8	17	10
ECR 10x165	61222	5.8	17	10
ECR 10x190	61223	5.8	17	10
ECR 10x250	61224	5.8	17	10
ECR 10x350	61225	5.8	17	10
ECR 12x160	61231	5.8	19	10
ECR 12x220	61232	5.8	19	10
ECR 12x250	61233	5.8	19	10
ECR 12x300	61234	5.8	19	10
ECR 12x380	61235	5.8	19	10
ECR 14x170	61241	5.8	22	10
ECR 16x165	61251	5.8	24	10
ECR 16x190	61252	5.8	24	10
ECR 16x250	61253	5.8	24	10
ECR 16x300	61254	5.8	24	5
ECR 16x380	61255	5.8	24	5
ECR 16x500	61256	5.8	24	5
ECR 20x260	61261	5.8	30	5
ECR 20x350	61262	5.8	30	5
ECR 20x500	61263	5.8	30	5
ECR 24x300	61271	5.8	36	5
ECR 24x400	61272	5.8	36	5
ECR 24x600	61273	5.8	36	5
ECR 27x340	61281	5.8	41	5
ECR 30x380	61291	5.8	46	5
ECR 30x500	61292	5.8	46	5

ECR

Threaded Rod

ECR

Zinc Plated

Complementary Products



page 10



page 14



page 18



page 99



Chemical Anchors

Heavy Duty Anchors

General Purpose Fasteners

Frame Anchors

Aerated Concrete Anchors

Drywall Anchors

Nailing Systems

Insulation Anchors

Screws

Drill Bits

Scaffold Fasteners

Solar System Fasteners

Special Fixing





Chemical Anchors

ECR

8.8 Grade

Heavy Duty Anchors

General Purpose Fasteners

Frame Anchors

Aerated Concrete Anchors

Drywall Anchors

Nailing Systems

Insulation Anchors

Screws

Drill Bits

Scaffold Fasteners

Solar System Fasteners

Special Fixing



Complementary Products



page 10



page 14



page 18



page 99

Product	Art. No.	Grade	Wrench Size	Qty Per Box
ECR 8.8 8x110	61611	8.8	13	10
ECR 8.8 8x150	61612	8.8	13	10
ECR 8.8 8x250	61613	8.8	13	10
ECR 8.8 10x130	61621	8.8	17	10
ECR 8.8 10x165	61622	8.8	17	10
ECR 8.8 10x190	61623	8.8	17	10
ECR 8.8 10x250	61624	8.8	17	10
ECR 8.8 10x350	61625	8.8	17	10
ECR 8.8 12x160	61631	8.8	19	10
ECR 8.8 12x220	61632	8.8	19	10
ECR 8.8 12x250	61633	8.8	19	10
ECR 8.8 12x300	61634	8.8	19	10
ECR 8.8 12x380	61635	8.8	19	10
ECR 8.8 14x170	61641	8.8	22	10
ECR 8.8 16x165	61651	8.8	24	10
ECR 8.8 16x190	61652	8.8	24	10
ECR 8.8 16x250	61653	8.8	24	10
ECR 8.8 16x300	61654	8.8	24	5
ECR 8.8 16x380	61655	8.8	24	5
ECR 8.8 16x500	61656	8.8	24	5
ECR 8.8 20x260	61661	8.8	30	5
ECR 8.8 20x350	61662	8.8	30	5
ECR 8.8 20x500	61663	8.8	30	5
ECR 8.8 24x300	61671	8.8	36	5
ECR 8.8 24x400	61672	8.8	36	5
ECR 8.8 24x600	61673	8.8	36	5
ECR 8.8 27x340	61681	8.8	41	5
ECR 8.8 30x380	61691	8.8	46	5
ECR 8.8 30x500	61692	8.8	46	5



ECR-A4

Stainless Steel

Product	Art. No.	Grade	Wrench Size	Qty Per Box
ECR 8x110	61711	A4	13	10
ECR 8x150	61712	A4	13	10
ECR 8x250	61713	A4	13	10
ECR 10x130	61721	A4	17	10
ECR 10x165	61722	A4	17	10
ECR 10x190	61723	A4	17	10
ECR 10x250	61724	A4	17	10
ECR 10x350	61725	A4	17	10
ECR 12x160	61731	A4	19	10
ECR 12x220	61732	A4	19	10
ECR 12x250	61733	A4	19	10
ECR 12x300	61734	A4	19	10
ECR 12x380	61735	A4	19	10
ECR 14x170	61741	A4	22	10
ECR 16x165	61751	A4	24	10
ECR 16x190	61752	A4	24	10
ECR 16x250	61753	A4	24	10
ECR 16x300	61754	A4	24	5
ECR 16x380	61755	A4	24	5
ECR 16x500	61756	A4	24	5
ECR 20x260	61761	A4	30	5
ECR 20x350	61762	A4	30	5
ECR 20x500	61763	A4	30	5
ECR 24x300	61771	A4	36	5
ECR 24x400	61772	A4	36	5
ECR 24x600	61773	A4	36	5
ECR 27x340	61781	A4	41	5
ECR 30x380	61791	A4	46	5
ECR 30x500	61792	A4	46	5

Complementary Products



page 10



page 14



page 18



page 99

Chemical Anchors

Heavy Duty Anchors

General Purpose Fasteners

Frame Anchors

Aerated Concrete Anchors

Drywall Anchors

Nailing Systems

Insulation Anchors

Screws

Drill Bits

Scaffold Fasteners

Solar System Fasteners

Special Fixing





Chemical Anchors

ECR- HDG

Hot-dip galvanized

Heavy Duty Anchors

General Purpose Fasteners

Frame Anchors

Aerated Concrete Anchors

Drywall Anchors

Nailing Systems

Insulation Anchors

Screws

Drill Bits

Scaffold Fasteners

Solar System Fasteners

Special Fixing



Product	Art. No.	Grade	Wrench Size	Qty Per Box
ECR-HDG 8x110	61511	5.8	13	10
ECR-HDG 8x150	61512	5.8	13	10
ECR-HDG 8x250	61513	5.8	13	10
ECR-HDG 10x130	61521	5.8	17	10
ECR-HDG 10x165	61522	5.8	17	10
ECR-HDG 10x190	61523	5.8	17	10
ECR-HDG 10x250	61524	5.8	17	10
ECR-HDG 10x350	61525	5.8	17	10
ECR-HDG 12x160	61531	5.8	19	10
ECR-HDG 12x220	61532	5.8	19	10
ECR-HDG 12x250	61533	5.8	19	10
ECR-HDG 12x300	61534	5.8	19	10
ECR-HDG 12x380	61535	5.8	19	10
ECR-HDG 14x170	61541	5.8	22	10
ECR-HDG 16x165	61551	5.8	24	10
ECR-HDG 16x190	61552	5.8	24	10
ECR-HDG 16x250	61553	5.8	24	10
ECR-HDG 16x300	61554	5.8	24	5
ECR-HDG 16x380	61555	5.8	24	5
ECR-HDG 16x500	61556	5.8	24	5
ECR-HDG 20x260	61561	5.8	30	5
ECR-HDG 20x350	61562	5.8	30	5
ECR-HDG 20x500	61563	5.8	30	5
ECR-HDG 24x300	61571	5.8	36	5
ECR-HDG 24x400	61572	5.8	36	5
ECR-HDG 24x600	61573	5.8	36	5
ECR-HDG 27x340	61581	5.8	41	5
ECR-HDG 30x380	61591	5.8	46	5
ECR-HDG 30x500	61592	5.8	46	5

Complementary Products



page 10



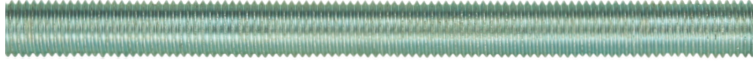
page 14



page 18



page 99



- Types available as zinc plated, zinc flake, HDG, 5.8, 8.8, 10.9, A2 and A4 Stainless Steel, HCR, Titanium alloy.

Product	Art. No.	Grade	Qty Per Box
ECS-8.8 M8x1000	61301	8.8	10
ECS-8.8 M10x1000	61302	8.8	10
ECS-8.8 M12x1000	61303	8.8	10
ECS-8.8 M14x1000	61304	8.8	5
ECS-8.8 M16x1000	61305	8.8	5
ECS-8.8 M18x1000	61306	8.8	5
ECS-8.8 M20x1000	61307	8.8	5
ECS-8.8 M22x1000	61308	8.8	5
ECS-8.8 M24x1000	61309	8.8	5
ECS-8.8 M26x1000	61310	8.8	4
ECS-8.8 M27x1000	61314	8.8	4
ECS-8.8 M28x1000	61311	8.8	4
ECS-8.8 M30x1000	61312	8.8	4
ECS-8.8 M33x1000	61313	8.8	4

ECS

1 Meter Threaded Rod

ECS 8.8

Grade

Complementary Products



page 10



page 14



page 18



page 99



Chemical Anchors

Heavy Duty Anchors

General Purpose Fasteners

Frame Anchors

Aerated Concrete Anchors

Drywall Anchors

Nailing Systems

Insulation Anchors

Screws

Drill Bits

Scaffold Fasteners

Solar System Fasteners

Special Fixing





Chemical Anchors

ECS A2

Stainless Steel

Heavy Duty Anchors

General Purpose Fasteners

Frame Anchors

Aerated Concrete Anchors

Drywall Anchors

Nailing Systems

Insulation Anchors

Screws

Drill Bits

Scaffold Fasteners

Solar System Fasteners

Special Fixing



ECS A4

Stainless Steel

Complementary Products



page 10



page 14



page 18



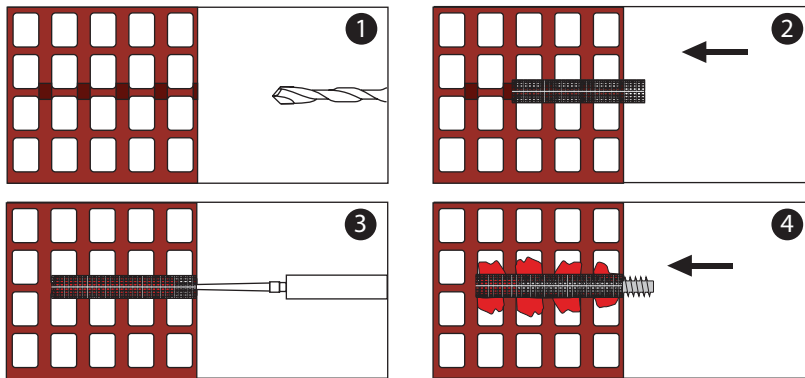
page 99

Product	Art. No.	Grade	Package Qty
ECS-A2 M8x1000	61341	A2-304	10
ECS-A2 M10x1000	61342	A2-304	10
ECS-A2 M12x1000	61343	A2-304	10
ECS-A2 M14x1000	61344	A2-304	5
ECS-A2 M16x1000	61345	A2-304	5
ECS-A2 M18x1000	61346	A2-304	5
ECS-A2 M20x1000	61347	A2-304	5
ECS-A2 M22x1000	61348	A2-304	5
ECS-A2 M24x1000	61349	A2-304	5
ECS-A2 M26x1000	61350	A2-304	4
ECS-A2 M27x1000	61354	A2-304	4
ECS-A2 M28x1000	61351	A2-304	4
ECS-A2 M30x1000	61352	A2-304	4
ECS-A2 M33x1000	61353	A2-304	4

Product	Art. No.	Grade	Package Qty
ECS-A4 M8x1000	61321	A4-316	10
ECS-A4 M10x1000	61322	A4-316	10
ECS-A4 M12x1000	61323	A4-316	10
ECS-A4 M14x1000	61324	A4-316	5
ECS-A4 M16x1000	61325	A4-316	5
ECS-A4 M18x1000	61326	A4-316	5
ECS-A4 M20x1000	61327	A4-316	5
ECS-A4 M22x1000	61328	A4-316	5
ECS-A4 M24x1000	61329	A4-316	5
ECS-A4 M26x1000	61330	A4-316	4
ECS-A4 M27x1000	61334	A4-316	4
ECS-A4 M28x1000	61331	A4-316	4
ECS-A4 M30x1000	61332	A4-316	4
ECS-A4 M33x1000	61333	A4-316	4



- Can be cut to the specified size.
- Used together with chemical cartridges and rot.
- The chemical material spills through the holes of the grating and fills the voids of the brick.
- The grating prevents the chemical from leaking out



Product	Art. No.	Hole Diameter	Sleeve Size	Suitable Rods	Qty Per Box
ECH 12	61491	12	1000	M8	10
ECH 16	61492	16	1000	M8 - M10	10
ECH 22	61493	22	1000	M12 - M16	5
ECH 30	61494	30	1000	M20 - M24	5

ECH

1 Meter Steel Sleeve For
Chemical Anchor

ECH

Application

ECH

Technical Information

Complementary Products



[page 16](#)



[page 20](#)



[page 27](#)



[page 99](#)



Chemical Anchors

Heavy Duty Anchors

General Purpose Fasteners

Frame Anchors

Aerated Concrete Anchors

Drywall Anchors

Nailing Systems

Insulation Anchors

Screws

Drill Bits

Scaffold Fasteners

Solar System Fasteners

Special Fixing





Chemical Anchors

ECZ

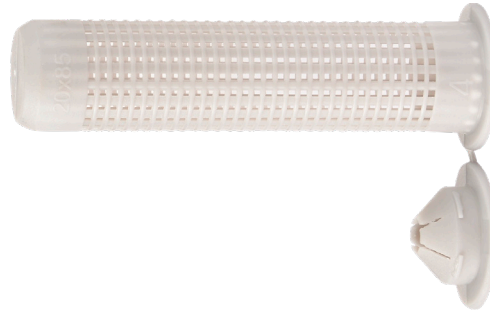
Nylon Sleeve For
Chemical Anchor

Main Material

- Hollow Brick
- Bims
- All Hollow Materials

Application Field

- Facades
- Shelves
- Handrails
- Fences



- Chemical cartridges are used together with a mixing rod.
- The chemical material spills through the holes of the sleeve and fills the void of the brick.
- The sleeve prevents the chemical from leaking out
- The centering piece prevents the rod from shifting off-center

Frame Anchors

Aerated Concrete Anchors

Drywall Anchors

Nailing Systems

Insulation Anchors

Screws

Drill Bits

Scaffold Fasteners

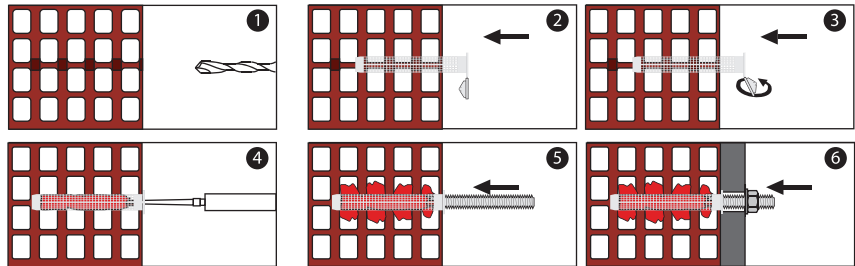
Solar System Fasteners

Special Fixing



ECZ

Application



ECZ

Technical Information

Product	Art. No.	Hole Diameter	Sieve Length	Suitable Rodst	Qty Per Box	Qty Per Carton
ECZ 10x45	61411	10	45	M6	10	100
ECZ 12x50	61421	12	50	M6 - M8	10	100
ECZ 12x60	61422	12	60	M6 - M8	10	100
ECZ 12x80	61423	12	80	M6 - M8	10	100
ECZ 16x85	61431	16	85	M8 - M10	10	100
ECZ 16x100	61432	16	100	M8 - M10	10	100
ECZ 16x130	61433	16	130	M8 - M10	10	100
ECZ 20x85	61441	20	85	M12 - M16	10	50

Complementary Products



[page 16](#)



[page 20](#)



[page 27](#)



[page 99](#)



Product	Art. No.	Cartridge Type	Material
HKD 11	66001	350 ml 10:1 Side by Side	Metal
HKD 21	66002	380 ml, 420 ml 10:1 Coaxial	Metal
HKD 31	66003	600 ml 1:1 Side by Side	Metal
HKD 41	66006	300 ml, Single cartridge	Metal
HKD 51	66007	585 ml, 3:1 Side by Side	Metal

Product	Art. No.
HKP 1	66010



HKD

Dispenser

HKD

Technical Information

HKP

Dust Pump for Hole Cleaning

HKT

Hole Cleaning Brush



Chemical Anchors

Heavy Duty Anchors

General Purpose Fasteners

Frame Anchors

Aerated Concrete Anchors

Drywall Anchors

Nailing Systems

Insulation Anchors

Screws

Drill Bits

Scaffold Fasteners

Solar System Fasteners

Special Fixing





Chemical Anchors

VCS 2

Concrete Screw

Heavy Duty Anchors

Main Material

- Concrete
- Cracked Concrete
- Hollow Concrete
- Natural Stone
- Solid Brick
- Aerated Concrete
- Wood

General Purpose Fasteners

Frame Anchors

Application Field

- Concrete molds
- Wind and Safety Protection Curtains
- Scaffolds
- Glass Railing Systems
- Steel Structures
- Facade Anchors
- Temporary Joints
- Structural Wood Connections
- Cantilever Handrail
- Perimeter Fences
- Safety Barrier

Aerated Concrete Anchors

Drywall Anchors

Nailing Systems

Insulation Anchors



Screws

VCS 2

Application

Drill Bits

Scaffold Fasteners

Complementary Products



page 99



page 35



page 94

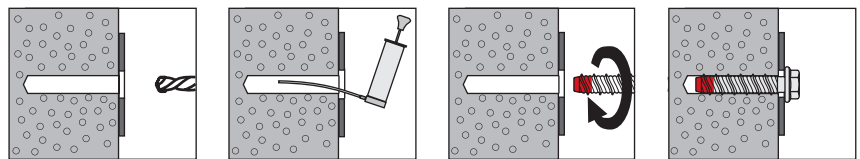


page 95

Special Fixing



- The VCS concrete screw is removable and can be reused in a different hole
- The screw's threads cut into the concrete, creating their own threads for a secure fit
- The embedded threads form a structural connection within the concrete
- It operates effectively at low edge and axis distances without pre-tensioning the concrete
- Quick and single-step installation process
- The anchor is single piece
- The red paint indicates that it has not been previously used



VCS 2

Concrete Screw

Product	Art. No.	Hole Diameter	Anchor Length	Wrench Size	Qty Per Box	Qty Per Carton
VCS 2 6x40	54711	6	40	10	100	800
VCS 2 6x50	54712	6	50	10	100	800
VCS 2 6x60	54713	6	60	10	100	800
VCS 2 6x80	54714	6	80	10	100	800
VCS 2 6x100	54715	6	100	10	100	800
VCS 2 6x120	54716	6	120	10	100	800
VCS 2 6x150	54717	6	150	10	100	800
VCS 2 8x50	54721	8	50	13	100	400
VCS 2 8x75	54722	8	75	13	100	400
VCS 2 8x100	54723	8	100	13	50	200
VCS 2 8x120	54724	8	120	13	50	200
VCS 2 8x150	54725	8	150	13	50	200
VCS 2 10x60	54731	10	60	15	50	200
VCS 2 10x75	54732	10	75	15	50	200
VCS 2 10x100	54733	10	100	15	50	200
VCS 2 10x120	54734	10	120	15	40	160
VCS 2 10x150	54735	10	150	15	25	100
VCS 2 10x200	54736	10	200	15	20	80
VCS 2 12x75	54741	12	75	19	25	100
VCS 2 12x100	54742	12	100	19	25	100
VCS 2 12x120	54743	12	120	19	25	100
VCS 2 12x150	54744	12	150	19	25	100
VCS 2 12x200	54745	12	200	19	20	80
VCS 2 14x80	54751	14	80	21	30	120
VCS 2 14x100	54752	14	80	21	20	80
VCS 2 14x115	54753	14	115	21	20	80
VCS 2 14x135	54754	14	135	21	15	60
VCS 2 14x150	54757	14	150	21	10	40
VCS 2 14x200	54756	14	200	21	10	40



Chemical Anchors

Heavy Duty Anchors

General Purpose Fasteners

Frame Anchors

Aerated Concrete Anchors

Drywall Anchors

Nailing Systems

Insulation Anchors

Screws

Drill Bits

Scaffold Fasteners

Solar System Fasteners

Special Fixing





Chemical Anchors

VTC 4 SEISMIC

Wedge Anchor

Zinc Plated

Main Material

- Cracked Concrete
- Uncracked Concrete
- Hard Naturel Stone

Application Field

- Power Plant Projects
- Tunnels
- Stadiums
- Seismic Connections
- Heavy Duty Steel Structures
- Roof / Facade Applications
- Bridges
- Seismic Areas
- Wind and Vibration-Resistant Areas
- Elevators

vesta
DesignFIX

VTC 4 SEISMIC

Application

Insulation Anchors

Screws

Drill Bits

Scaffold Fasteners

Solar System Fasteners

Special Fixing



Complementary Products



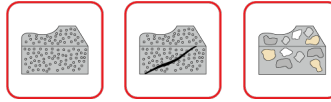
page 99



page 35



page 35

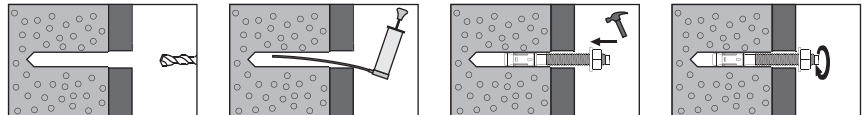


Stainless Steel Clips



NEW PRODUCT

- C1,C2 Seismic Certified
- Stainless Steel Clip
- Flexible anchoring depth allows for installation at your desired depth due to the long thread length.
- The reduced head design prevents thread stripping during installation.
- Bolt and washer pre-installed
- Clip design engineered for maximum safety.





Chemical Anchors

Heavy Duty Anchors

General Purpose Fasteners

Frame Anchors

Aerated Concrete Anchors

Drywall Anchors

Nailing Systems

Insulation Anchors

Screws

Drill Bits

Scaffold Fasteners

Solar System Fasteners

Special Fixing



VTC 4 SEISMIC

Technical Information

Product	Art. No.	Hole Diameter	Anchor Length	Wrench Size	Qty Per Box	Qty Per Carton
VTC 4 Seismic M6x60	81200	6	60	10	150	600
VTC 4 Seismic M6x75	81201	6	75	10	150	600
VTC 4 Seismic M6x100	81203	6	100	10	150	600
VTC 4 Seismic M6x125	81204	6	125	10	150	600
VTC 4 Seismic M6x150	81205	6	150	10	150	600
VTC 4 Seismic M8x60	81210	8	60	13	100	400
VTC 4 Seismic M8x65	81211	8	65	13	100	400
VTC 4 Seismic M8x75	81212	8	75	13	100	400
VTC 4 Seismic M8x80	81213	8	80	13	100	400
VTC 4 Seismic M8x95	81214	8	95	13	100	400
VTC 4 Seismic M8x105	81215	8	105	13	50	200
VTC 4 Seismic M8x115	81216	8	115	13	50	200
VTC 4 Seismic M8x135	81217	8	135	13	50	200
VTC 4 Seismic M8x150	81218	8	150	13	50	200
VTC 4 Seismic M10x60	81230	10	60	17	50	200
VTC 4 Seismic M10x85	81331	10	85	17	50	200
VTC 4 Seismic M10x90	81232	10	90	17	50	200
VTC 4 Seismic M10x100	81233	10	100	17	50	200
VTC 4 Seismic M10x110	81234	10	110	17	50	200
VTC 4 Seismic M10x120	81235	10	120	17	50	200
VTC 4 Seismic M10x130	81236	10	130	17	20	80
VTC 4 Seismic M10x160	81237	10	160	17	20	80
VTC 4 Seismic M10x180	81238	10	180	17	20	80
VTC 4 Seismic M10x220	81239	10	220	17	20	80
VTC 4 Seismic M12x80	81250	12	80	19	25	100
VTC 4 Seismic M12x90	81251	12	90	19	25	100
VTC 4 Seismic M12x95	81252	12	95	19	25	100
VTC 4 Seismic M12x100	81253	12	100	19	25	100
VTC 4 Seismic M12x105	81254	12	105	19	25	100
VTC 4 Seismic M12x115	81255	12	115	19	25	100
VTC 4 Seismic M12x120	81256	12	120	19	20	80
VTC 4 Seismic M12x135	81257	12	135	19	20	80
VTC 4 Seismic M12x165	81258	12	165	19	10	40
VTC 4 Seismic M12x175	81259	12	175	19	10	40
VTC 4 Seismic M12x185	81260	12	185	19	10	40
VTC 4 Seismic M12x220	81261	12	220	19	10	40
VTC 4 Seismic M16x90	81280	16	90	24	20	80
VTC 4 Seismic M16x100	81281	16	100	24	20	80
VTC 4 Seismic M16x115	81282	16	115	24	20	80
VTC 4 Seismic M16x125	81283	16	125	24	20	80
VTC 4 Seismic M16x135	81284	16	135	24	20	80
VTC 4 Seismic M16x150	81285	16	150	24	20	80
VTC 4 Seismic M16x160	81286	16	160	24	5	20
VTC 4 Seismic M16x210	81287	16	210	24	5	20



Chemical Anchors

VTC-ETA1

Wedge Anchors

Seismic Certificated

Heavy Duty Anchors

Main Material

- Cracked Concrete
- Uncracked Concrete
- Hard Naturel Stone

General Purpose Fasteners

Application Field

- Power Plant Projects
- Tunnels
- Stadiums
- Seismic Connections
- Heavy Duty Steel Structures
- Roof / Facade Applications
- Bridges
- Seismic Areas
- Wind and Vibration-Resistant Areas
- Elevators

Frame Anchors

Aerated Concrete Anchors

Drywall Anchors

Nailing Systems



Insulation Anchors

VTC-ETA1

Application

Screws

Drill Bits

VTC-ETA1

Certificated

Scaffold Fasteners

Complementary Products



page 99



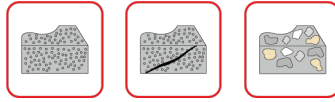
page 35



page 35

Solar System Fasteners

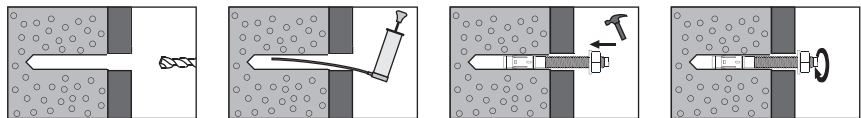
Special Fixing



Stainless Steel Clips



- C1 Seismic Certified
- Stainless Steel Clip
- Flexible anchoring depth allows for installation at your desired depth due to the long thread length.
- The reduced head diameter prevents thread damage during installation.
- Bolt and washer pre-installed.
- Clip design engineered for maximum safety.



VTC-ETA1

Wedge Anchors

Seismic Certificated

Product	Art. No.	Hole Diameter	Anchor Length	Max. fixture thickness	Wrench Size	Qty Per Box	Qty Per Carton
VTC-ETA1 M8x50	52201	8	50	-	13	100	400
VTC-ETA1 M8x60	52202	8	60	5	13	100	400
VTC-ETA1 M8x65	52203	8	65	10	13	100	400
VTC-ETA1 M8x75	52204	8	75	20	13	100	400
VTC-ETA1 M8x85	52205	8	85	30	13	100	400
VTC-ETA1 M8x95	52206	8	95	40	13	50	200
VTC-ETA1 M8x105	52207	8	105	50	13	50	200
VTC-ETA1 M8x130	52208	8	130	75	13	50	200
VTC-ETA1 M8x155	52209	8	155	100	13	50	200
VTC-ETA1 M8x205	52210	8	205	150	13	50	200
VTC-ETA1 M10x60	52211	10	60	-	17	50	200
VTC-ETA1 M10x85	52212	10	85	5	17	50	200
VTC-ETA1 M10x90	52213	10	90	10	17	50	200
VTC-ETA1 M10x100	52214	10	100	20	17	50	200
VTC-ETA1 M10x110	52215	10	110	30	17	50	200
VTC-ETA1 M10x120	52216	10	120	40	17	50	200
VTC-ETA1 M10x130	52217	10	130	50	17	20	80
VTC-ETA1 M10x160	52218	10	160	80	17	20	80
VTC-ETA1 M10x180	52219	10	180	100	17	20	80
VTC-ETA1 M10x220	52220	10	220	140	17	20	80
VTC-ETA1 M12x80	52221	12	80	-	19	25	100
VTC-ETA1 M12x90	52222	12	90	5	19	25	100
VTC-ETA1 M12x95	52223	12	95	10	19	25	100
VTC-ETA1 M12x100	52224	12	100	15	19	25	100
VTC-ETA1 M12x105	52225	12	105	20	19	25	100
VTC-ETA1 M12x115	52226	12	115	30	19	25	100
VTC-ETA1 M12x120	52227	12	120	35	19	20	80
VTC-ETA1 M12x135	52228	12	135	50	19	20	80
VTC-ETA1 M12x165	52229	12	165	80	19	10	40
VTC-ETA1 M12x175	52230	12	175	90	19	10	40
VTC-ETA1 M12x185	52231	12	185	100	19	10	40
VTC-ETA1 M12x220	52232	12	220	135	19	10	40
VTC-ETA1 M16x90	52233	16	90	-	24	20	80
VTC-ETA1 M16x100	52234	16	100	-	24	20	80
VTC-ETA1 M16x115	52235	16	115	-	24	20	80
VTC-ETA1 M16x125	52236	16	125	10	24	20	80
VTC-ETA1 M16x135	52237	16	135	20	24	20	80
VTC-ETA1 M16x150	52238	16	150	35	24	20	80
VTC-ETA1 M16x160	52239	16	160	45	24	5	20
VTC-ETA1 M16x210	52240	16	210	95	24	5	20



Chemical Anchors

Heavy Duty Anchors

General Purpose Fasteners

Frame Anchors

Aerated Concrete Anchors

Drywall Anchors

Nailing Systems

Insulation Anchors

Screws

Drill Bits

Scaffold Fasteners

Solar System Fasteners

Special Fixing





Chemical Anchors

VTC-3 Seismic A4 FMC

Wedge Anchors

Seismic Certified

Heavy Duty Anchors

General Purpose Fasteners

Main Material

- Cracked Concrete
- Uncracked Concrete
- Hard Naturel Stone

Frame Anchors

Application Field

- Nuclear Power Plant Projects
- Power Plant Projects
- Tunnels
- Stadiums
- Seismic Connections
- Heavy Duty Steel Structures
- Roof / Facade Applications
- Bridges
- Seismic Areas
- Wind and Vibration-Resistant Areas
- Elevators

Aerated Concrete Anchors

Drywall Anchors

Nailing Systems



Insulation Anchors

VTC-3 Seismic A4 FMC

Application

Screws

Drill Bits

VTC-3 Seismic A4 FMC

Certificated

Scaffold Fasteners

Complementary Products



page 99



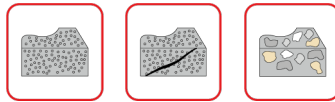
page 35



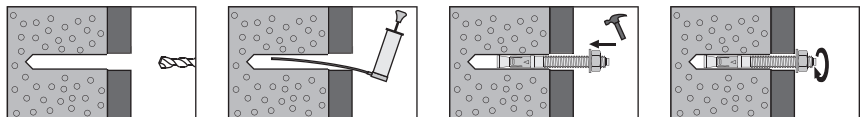
page 35

Solar System Fasteners

Special Fixing



- C1+C2 Seismic Certified
- A4 Stainless Steel, manufactured from high-quality A4 stainless steel for exceptional corrosion resistance and durability
- Flexible anchoring depth allows for installation at your desired depth due to the long thread length.
- The reduced head diameter prevents thread damage during installation.
- Bolt and washer pre-installed
- Clip design engineered for maximum safety.



Product	Art. No.	Hole Diameter	Dübel Boyu	Bağlanacak parça kalınlığı	Wrench Size	Qty Per Box	Qty Per Carton
VTC-3 SEISMIC A4 FMC M8x68	51901	8	68	4	13	100	400
VTC-3 SEISMIC A4 FMC M8x75	51902	8	75	10	13	100	400
VTC-3 SEISMIC A4 FMC M8x90	51903	8	90	25	13	100	400
VTC-3 SEISMIC A4 FMC M8x115	51904	8	115	50	13	100	400
VTC-3 SEISMIC A4 FMC M8x135	51905	8	135	70	13	100	400
VTC-3 SEISMIC A4 FMC M8x165	51906	8	165	100	13	50	200
VTC-3 SEISMIC A4 FMC M10x90	51907	10	90	10	17	50	200
VTC-3 SEISMIC A4 FMC M10x105	51908	10	105	25	17	50	200
VTC-3 SEISMIC A4 FMC M10x115	51909	10	115	35	17	50	200
VTC-3 SEISMIC A4 FMC M10x135	51910	10	135	55	17	50	200
VTC-3 SEISMIC A4 FMC M10x155	51911	10	155	75	17	50	200
VTC-3 SEISMIC A4 FMC M10x185	51912	10	185	105	17	25	100
VTC-3 SEISMIC A4 FMC M12x110	51913	12	110	10	19	25	100
VTC-3 SEISMIC A4 FMC M12x120	51914	12	120	20	19	25	100
VTC-3 SEISMIC A4 FMC M12x145	51915	12	145	45	19	25	100
VTC-3 SEISMIC A4 FMC M12x170	51916	12	170	70	19	25	100
VTC-3 SEISMIC A4 FMC M12x200	51917	12	200	100	19	25	100
VTC-3 SEISMIC A4 FMC M16x130	51918	16	130	10	24	20	80
VTC-3 SEISMIC A4 FMC M16x150	51919	16	150	30	24	20	80
VTC-3 SEISMIC A4 FMC M16x185	51920	16	185	60	24	20	80
VTC-3 SEISMIC A4 FMC M16x220	51921	16	220	100	24	15	60

VTC-3 Seismic A4 FMC

Wedge Anchors

Stainless Steel

Seismic Certificated



Chemical Anchors

Heavy Duty Anchors

General Purpose Fasteners

Frame Anchors

Aerated Concrete Anchors

Drywall Anchors

Nailing Systems

Insulation Anchors

Screws

Drill Bits

Scaffold Fasteners

Solar System Fasteners

Special Fixing





Chemical Anchors

VTC A4

Wedge Anchors

Stainless Steel

Heavy Duty Anchors

Main Material

- Concrete
- Natural Stone

Application Field

- Facades
- Steel Structures
- Fences
- Handrails
- Machines
- Cantilevers
- Shelves

General Purpose Fasteners

Frame Anchors

Aerated Concrete Anchors

Drywall Anchors

Nailing Systems

Insulation Anchors

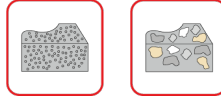
Screws

Drill Bits

Scaffold Fasteners

Solar System Fasteners

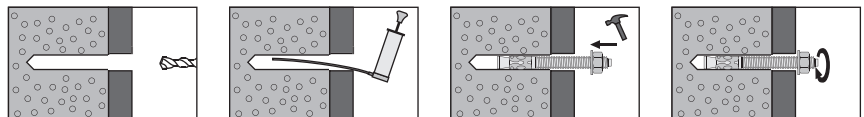
Special Fixing



- Stainless steel suitable for corrosive environments
- Flexible anchoring depth allows for installation at your desired depth due to the long thread length.
- The reduced head diameter prevents thread damage during installation.
- Bolt and washer pre-installed
- Clip design engineered for maximum safety.

VTC-A4

Application



Complementary Products



page 99



page 35



page 35

Product	Art. No.	Hole Diameter	Anchor Length	Wrench Size	Qty Per Box	Qty Per Carton
VTC-A4 6x65	52503	6	65	10	100	400
VTC-A4 6x85	52504	6	85	10	100	400
VTC-A4 8x75	52513	8	75	13	100	400
VTC-A4 8x90	52515	8	90	13	100	400
VTC-A4 8x100	52516	8	100	13	50	200
VTC-A4 8x120	52517	8	120	13	50	200
VTC-A4 10x90	52523	10	90	17	50	200
VTC-A4 10x110	52524	10	110	17	50	200
VTC-A4 10x120	52525	10	120	17	50	200
VTC-A4 10x150	52526	10	150	17	25	100
VTC-A4 12x100	52533	12	100	19	50	200
VTC-A4 12x110	52534	12	110	19	40	200
VTC-A4 12x120	52535	12	120	19	25	100
VTC-A4 12x150	52536	12	150	19	25	100
VTC-A4 14x110	52543	14	110	22	25	100
VTC-A4 14x130	52544	14	130	22	25	100
VTC-A4 16x110	52551	16	110	24	20	80
VTC-A4 16x125	52553	16	125	24	20	80
VTC-A4 16x145	52552	16	145	24	20	80
VTC-A4 16x150	52554	16	150	24	20	80
VTC-A4 16x175	52555	16	175	24	10	40
VTC-A4 20x160	52562	20	160	30	10	40
VTC-A4 20x170	52563	20	170	30	10	40
VTC-A4 20x200	52565	20	200	30	10	40
VTC-A4 24x200	52573	24	200	36	5	20
VTC-A2 24x220	52474	24	220	36	5	20

VTC A4

Wedge Anchors

Stainless Steel



Chemical Anchors

Heavy Duty Anchors

General Purpose Fasteners

Frame Anchors

Aerated Concrete Anchors

Drywall Anchors

Nailing Systems

Insulation Anchors

Screws

Drill Bits

Scaffold Fasteners

Solar System Fasteners

Special Fixing





Chemical Anchors

VTC-A2

Wedge Anchors Stainless Steel

Heavy Duty Anchors

Main Material

- Concrete
- Naturel Stone

General Purpose Fasteners

Application Field

- Facades
- Steel Structures
- Fences
- Handrails
- Machines
- Cantilevers
- Shelves

Frame Anchors

Aerated Concrete Anchors

Drywall Anchors

Nailing Systems

VTC-A2

Application

Insulation Anchors

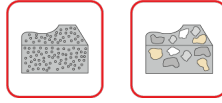
Screws

Drill Bits

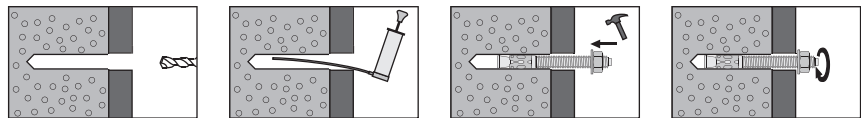
Scaffold Fasteners

Solar System Fasteners

Special Fixing



- Stainless steel suitable for corrosive environments
- Flexible anchoring depth allows for installation at your desired depth due to the long thread length.
- The reduced head diameter prevents thread damage during installation.
- Bolt and washer pre-installed
- Clip design engineered for maximum safety.



Complementary Products



page 99



page 35



page 35

VTC-A2

Wedge Anchors

Stainless Steel

Product	Art. No.	Hole Diameter	Anchor Length	Wrench Size	Qty Per Box	Qty Per Carton
VTC-A2 6x65	52403	6	65	10	100	400
VTC-A2 6x85	52404	6	85	10	100	400
VTC-A2 8x75	52413	8	75	13	100	400
VTC-A2 8x90	52415	8	90	13	100	400
VTC-A2 8x100	52416	8	100	13	50	200
VTC-A2 8x120	52417	8	120	13	50	200
VTC-A2 10x90	52423	10	90	17	50	200
VTC-A2 10x110	52427	10	110	17	50	200
VTC-A2 10x120	52425	10	120	17	50	200
VTC-A2 10x150	52426	10	150	17	25	100
VTC-A2 12x100	52433	12	100	19	50	200
VTC-A2 12x110	52434	12	110	19	40	200
VTC-A2 12x120	52435	12	120	19	25	100
VTC-A2 12x150	52436	12	150	19	25	100
VTC-A2 14x110	52443	14	110	22	25	100
VTC-A2 14x130	52444	14	130	22	25	100
VTC-A2 16x110	52451	16	110	24	20	80
VTC-A2 16x125	52453	16	125	24	20	80
VTC-A2 16x145	52452	16	145	24	20	80
VTC-A2 16x150	52454	16	150	24	20	80
VTC-A2 16x175	52455	16	175	24	10	40
VTC-A2 20x160	52462	20	160	30	10	40
VTC-A2 20x170	52463	20	170	30	10	40
VTC-A2 20x200	52465	20	200	30	10	40
VTC-A2 24x200	52473	24	200	36	5	20
VTC-A2 24x220	52474	24	220	36	5	20



Chemical Anchors

Heavy Duty Anchors

General Purpose Fasteners

Frame Anchors

Aerated Concrete Anchors

Drywall Anchors

Nailing Systems

Insulation Anchors

Screws

Drill Bits

Scaffold Fasteners

Solar System Fasteners

Special Fixing





Chemical Anchors

KTA

Wedge Anchor

Heavy Duty Anchors

Main Material

- Concrete
- Naturel Stone

General Purpose Fasteners

Application Field

- Facades
- Steel Structures
- Fences
- Handrails
- Machines
- Cantilevers
- Shelves

Frame Anchors

Aerated Concrete Anchors

Drywall Anchors

Nailing Systems

Insulation Anchors

KTA

Application

Screws

Drill Bits

Scaffold Fasteners

Complementary Products



page 99



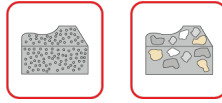
page 35



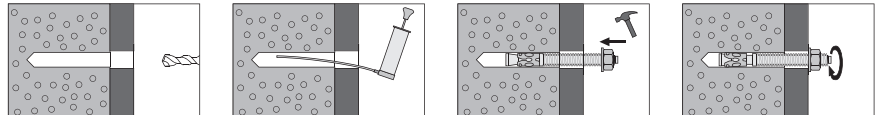
page 35

Solar System Fasteners

Special Fixing



- Flexible anchoring depth allows for installation at your desired depth due to the long thread length.
- The reduced head diameter prevents thread damage during installation.
- Bolt and washer pre-installed
- Clip design. It is designed for maximum safety.



KTA

Wedge Anchor

Product	Art. No.	Hole Diameter	Anchor Length	Wrench Size	Qty Per Box	Qty Per Carton
KTA 8x75	52313	8	75	13	150	600
KTA 8x90	52318	8	90	13	100	400
KTA 8x110	52319	8	110	13	75	300
KTA 8x130	52309	8	130	13	60	240
KTA 8x150	52317	8	150	13	50	200
KTA 8x180	52308	8	180	13	30	120
KTA 10x90	52323	10	90	17	80	320
KTA 10x120	52329	10	120	17	50	200
KTA 10x150	52331	10	150	17	50	200
KTA 10x180	52307	10	180	17	40	160
KTA 10x200	52332	10	200	17	30	120
KTA 12x90	52335	12	90	19	50	200
KTA 12x110	52334	12	110	19	50	200
KTA 12x140	52339	12	140	19	30	120
KTA 12x160	52341	12	160	19	30	120
KTA 12x180	52342	12	180	19	25	100
KTA 12x200	52343	12	200	19	20	80
KTA 12x220	52344	12	220	19	15	60
KTA 12x250	52390	12	250	19	10	40
KTA 12x300	52391	12	300	19	5	20
KTA 14x110	52349	14	110	22	25	100
KTA 14x150	52348	14	150	22	20	80
KTA 16x110	52352	16	110	24	25	100
KTA 16x125	52355	16	125	24	25	100
KTA 16x145	52354	16	145	24	20	80
KTA 16x175	52366	16	175	24	15	60
KTA 16x200	52360	16	200	24	10	40
KTA 16x220	52361	16	220	24	10	40
KTA 16x250	52362	16	250	24	10	40
KTA 16x300	52365	16	300	24	5	20
KTA 20x160	52376	20	160	30	10	40
KTA 20x180	52377	20	180	30	10	40
KTA 20x200	52378	20	200	30	10	40
KTA 20x220	52379	20	220	30	5	20
KTA 20x260	52381	20	260	30	5	20
KTA 20x300	52389	20	300	30	5	20
KTA 24x200	52386	24	200	36	5	20
KTA 24x250	52387	24	250	36	5	20
KTA 24x300	52388	24	300	36	5	20
KTA 30x300	52392	30	300	46	4	16



Chemical Anchors

Heavy Duty Anchors

General Purpose Fasteners

Frame Anchors

Aerated Concrete Anchors

Drywall Anchors

Nailing Systems

Insulation Anchors

Screws

Drill Bits

Scaffold Fasteners

Solar System Fasteners

Special Fixing





Chemical Anchors

FM-ATS

Heavy Duty Safety Bolt

Heavy Duty Anchors

Main Material

- Cracked Concrete
- Uncracked Concrete
- Naturel Stone

General Purpose Fasteners

Application Field

- Nuclear Power Plant Projects
- Power Plant Projects
- Tunnels
- Stadiums
- Seismic Connections
- Heavy Steel Structures
- Roof / Facade Applications
- Bridges
- Seismic Zones
- Wind and Vibration-Resistant Areas
- Elevators

Frame Anchors

Aerated Concrete Anchors

Drywall Anchors

Nailing Systems

Insulation Anchors

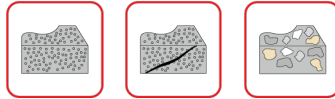
Screws

Drill Bits

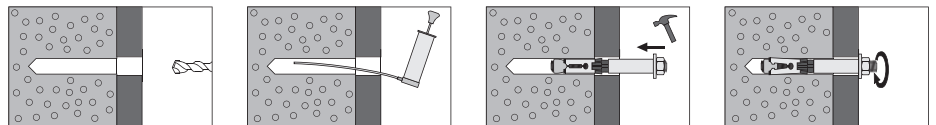
Scaffold Fasteners

Solar System Fasteners

Special Fixing



- Plastic Component
 - » Prevents the anchor from rotating within the hole during installation
 - » As torque is applied, it compresses and ensures the anchor head sits flush against the concrete of the connected components
- Enables easy installation and prevents application errors by indicating the proper embedment depth
- Grade 8.8 Steel



Complementary Products





FM-ATS-B

Hex Nut Head

Product	Art. No.	Hole Diameter	Anchor Length	Wrench Size	Qty Per Box	Qty Per Carton
FM-ATS-B 10/10-M6	51001	10	80	10	50	200
FM-ATS-B 10/20-M6	51002	10	90	10	50	200
FM-ATS-B 10/50-M6	51003	10	120	10	50	200
FM-ATS-B 12/10-M8	51011	12	93	13	25	100
FM-ATS-B 12/20-M8	51012	12	103	13	25	100
FM-ATS-B 12/50-M8	51013	12	133	13	25	100
FM-ATS-B 15/10-M10	51021	15	105	17	20	80
FM-ATS-B 15/20-M10	51022	15	115	17	20	80
FM-ATS-B 15/50-M10	51023	15	145	17	20	80
FM-ATS-B 15/100-M10	51024	15	195	17	20	80
FM-ATS-B 18/10-M12	51031	18	125	19	20	80
FM-ATS-B 18/25-M12	51032	18	140	19	20	80
FM-ATS-B 18/50-M12	51033	18	165	19	10	80
FM-ATS-B 18/100-M12	51034	18	215	19	10	80
FM-ATS-B 24/10-M16	51041	24	148	24	10	40
FM-ATS-B 24/25-M16	51042	24	163	24	10	40
FM-ATS-B 24/50-M16	51043	24	188	24	10	40
FM-ATS-B 24/100-M16	51044	24	238	24	5	40
FM-ATS-B 28/10-M20	51050	28	180	30	5	32
FM-ATS-B 28/30-M20	51051	28	200	30	5	32
FM-ATS-B 28/60-M20	51052	28	230	30	5	24
FM-ATS-B 28/100-M20	51053	28	270	30	5	24
FM-ATS-B 32/10-M24	51060	32	205	36	5	24
FM-ATS-B 32/30-M24	51061	32	225	36	5	24
FM-ATS-B 32/60-M24	51062	32	255	36	5	24



FM-ATS-SK

Countersunk Head

Product	Art. No.	Hole Diameter	Anchor Length	Wrench Size	Qty Per Box	Qty Per Carton
FM-ATS-SK 10/15-M6	51201	10	75	5	50	200
FM-ATS-SK 10/25-M6	51202	10	85	5	50	200
FM-ATS-SK 12/16-M8	51211	12	85	6	25	100
FM-ATS-SK 12/26-M8	51212	12	95	6	25	100
FM-ATS-SK 12/56-M8	51213	12	125	6	25	100
FM-ATS-SK 15/17-M10	51221	15	95	8	20	80
FM-ATS-SK 15/27-M10	51222	15	105	8	20	80
FM-ATS-SK 18/33-M12	51232	18	135	10	20	80



Chemical Anchors

Heavy Duty Anchors

General Purpose Fasteners

Frame Anchors

Aerated Concrete Anchors

Drywall Anchors

Nailing Systems

Insulation Anchors

Screws

Drill Bits

Scaffold Fasteners

Solar System Fasteners

Special Fixing





Chemical Anchors

FM-ATS-S

Hex Head

Heavy Duty Anchors



General Purpose Fasteners

Frame Anchors

Aerated Concrete Anchors

Drywall Anchors

Nailing Systems

Insulation Anchors

Screws

Drill Bits

Scaffold Fasteners

Solar System Fasteners

Special Fixing



Complementary Products



page 99

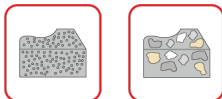


page 35

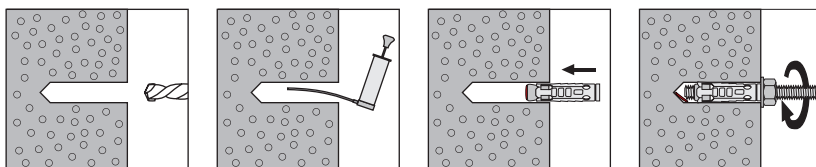


page 35

Product	Art. No.	Hole Diameter	Anchor Length	Wrench Size	Qty Per Box	Qty Per Carton
FM-ATS-S 10/10-M6	51101	10	76	10	50	200
FM-ATS-S 10/20-M6	51102	10	86	10	50	200
FM-ATS-S 10/50-M6	51103	10	116	10	50	200
FM-ATS-S 12/10-M8	51111	12	88	13	25	100
FM-ATS-S 12/20-M8	51112	12	98	13	25	100
FM-ATS-S 12/50-M8	51113	12	128	13	25	100
FM-ATS-S 15/10-M10	51121	15	100	17	20	80
FM-ATS-S 15/20-M10	51122	15	110	17	20	80
FM-ATS-S 15/50-M10	51123	15	140	17	20	80
FM-ATS-S 15/100-M10	51124	15	190	17	20	80
FM-ATS-S 18/10-M12	51131	18	120	19	20	80
FM-ATS-S 18/25-M12	51132	18	135	19	20	80
FM-ATS-S 18/50-M12	51133	18	160	19	20	80
FM-ATS-S 18/100-M12	51134	18	210	19	20	80
FM-ATS-S 24/10-M16	51141	24	140	24	10	40
FM-ATS-S 24/25-M16	51142	24	155	24	10	40
FM-ATS-S 24/50-M16	51143	24	180	24	10	40
FM-ATS-S 24/100-M16	51144	24	230	24	10	40
FM-ATS-S 28/10-M20	51150	28	173	30	8	36
FM-ATS-S 28/30-M20	51151	28	193	30	8	36
FM-ATS-S 28/60-M20	51152	28	223	30	6	24
FM-ATS-S 28/100-M20	51153	28	263	30	6	24
FM-ATS-S 32/10-M24	51160	32	195	36	6	24
FM-ATS-S 32/30-M24	51161	32	215	36	6	24
FM-ATS-S 32/60-M24	51162	32	245	36	6	24



- Used in connections with rods and bolts.
- The plug prevents dust from entering the anchor.
- Depth adjustment can be made for the connected rods



Product	Art. No.	Hole Diameter	Anchor Length	Qty Per Box	Qty Per Carton
SMZ M6	55001	10	46	180	2160
SMZ M8	55002	12	50	100	1200
SMZ M10	55003	15	55	60	720
SMZ M12	55004	18	80	40	480
SMZ M16	55005	24	90	20	240

Product	Art. No.	Hole Diameter	Anchor Length	Qty Per Box	Qty Per Carton
SMZ-A2 M6	55011	10	46	180	2160
SMZ-A2 M8	55012	12	50	100	1200
SMZ-A2 M10	55013	15	55	60	720
SMZ-A2 M12	55014	18	80	40	480
SMZ-A2 M16	55015	24	90	20	240

SMZ

One Piece Anchor

Main Material

- Concrete
- Hard Naturel Stone

Application Field

- Mechanical Installation
- Electrical Installation
- Rod and Bolt Connections

SMZ

Application

SMZ

Zinc Plated

SMZ-A2

Stainless Steel

Complementary Products



page 99



page 35



page 35



Chemical Anchors

Heavy Duty Anchors

General Purpose Fasteners

Frame Anchors

Aerated Concrete Anchors

Drywall Anchors

Nailing Systems

Insulation Anchors

Screws

Drill Bits

Scaffold Fasteners

Solar System Fasteners

Special Fixing





Chemical Anchors

SIA

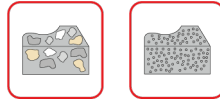
Drop In Anchor

Main Material

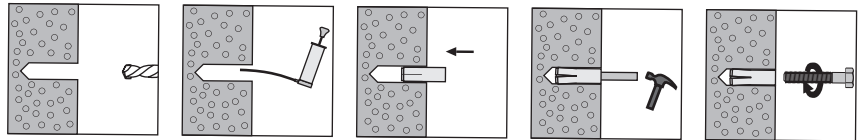
- Concrete
- Hard Naturel Stone

Application Field

- Mechanical Installation
- Electrical Installation
- Rod and Bolt Connections
- Core Machine Connection



- Features a ribbed surface for improved holding power.
- Suitable for rod and bolt connections.
- Equipped with an internal stopper to prevent dust infiltration and eliminate core drop.



SIA

Application

SIA

Zinc Plated

Product	Art. No.	Hole Diameter	Anchor Length	Qty Per Box
SIA M6x25	56201	8	25	100
SIA M8x30	56202	10	30	100
SIA M10x40	56203	12	40	50
SIA M12x50	56204	16	50	50
SIA M16x65	56205	20	65	25
SIA M20x80	56206	25	80	25

Product	Art. No.	Hole Diameter	Anchor Length	Qty Per Box
SIA-A4 M8x30	56212	10	30	100
SIA-A4 M10x40	56213	12	40	50
SIA-A4 M12x50	56214	16	50	50
SIA-A4 M16x65	56215	20	65	25
SIA-A4 M20x80	56216	25	80	25

SIA-A4

Stainless Steel

Complementary Products



page 99



page 35



page 35

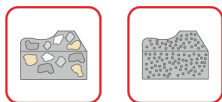
Drill Bits

Scaffold Fasteners

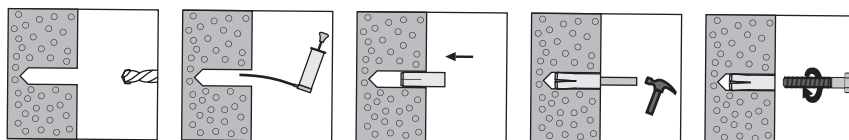
Solar System Fasteners

Special Fixing





- Features a ribbed surface for improved holding power.
- Suitable for rod and bolt connections.
- Equipped with an internal stopper to prevent dust infiltration and eliminate core drop.



Product	Art. No.	Hole Diameter	Anchor Length	Qty Per Box
SIAL M6x25	56231	8	25	100
SIAL M8x25	56232	10	25	100
SIAL M8x30	56233	10	30	100
SIAL M10x25	56234	12	25	50
SIAL M10x30	56235	12	30	50
SIAL M10x40	56236	12	40	50
SIAL M12x25	56237	15	25	50
SIAL M12x50	56238	15	50	50
SIAL M16x65	56239	20	65	25



Product	Art. No.
M8	56242
M10	56243
M12	56244
M16	56245
M20	56246

SIAL

Drop In Anchor

Main Material

- Concrete
- Hard Naturel Stone

Application Field

- Mechanical Installation
- Electrical Installation
- Rod and Bolt Connections
- Core Machine Connection

SIAL

Application

SIAL

Zinc Plated

ST

Setting Tool For Drop In Anchor

Complementary Products

 [page 99](#)

 [page 35](#)

 [page 35](#)



Chemical Anchors

Heavy Duty Anchors

General Purpose Fasteners

Frame Anchors

Aerated Concrete Anchors

Drywall Anchors

Nailing Systems

Insulation Anchors

Screws

Drill Bits

Scaffold Fasteners

Solar System Fasteners

Special Fixing





Chemical Anchors

CLE

Ceiling Anchor

Heavy Duty Anchors

Main Material

- Concrete

General Purpose Fasteners

Application Field

- Suspended Ceiling Application

Frame Anchors

Aerated Concrete Anchors

Drywall Anchors

Nailing Systems

CLE

Application

Insulation Anchors

Screws

Drill Bits

CLE

Scaffold Fasteners

Complementary Products



[page 127](#)



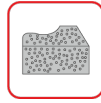
[page 40](#)



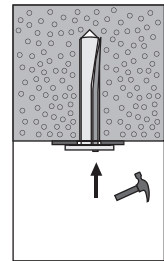
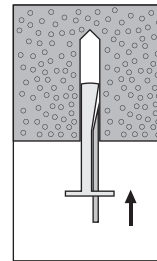
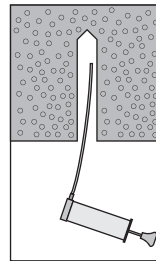
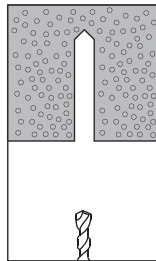
[page 40](#)

Solar System Fasteners

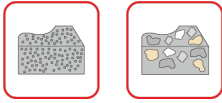
Special Fixing



- Wide flange designed for suspended ceiling connections
- Hammer in installation
- Quick one-step assembly



Product	Art. No.	Hole Diameter	Anchor Length	Qty Per Box	Qty Per Carton
CLE M6x35	57301	6	35	200	800
CLE M6x65	57302	6	65	100	400



- Available in A2 stainless steel for use in corrosive environments
- Internal threaded design allows for the use of various types of bolts
- The plastic cap prevents dust from entering the anchor, ensuring no damage to the threads

Product	Art. No.	Hole Diameter	Anchor Length	Qty Per Box	Qty Per Carton
LZS M6	55101	12	45	100	400
LZS M8	55102	14	55	50	200
LZS M10	55103	16	65	50	200
LZS M12	55104	20	75	25	100
LZS M16	55105	24	90	10	40

Product	Art. No.	Hole Diameter	Anchor Length	Qty Per Box	Qty Per Carton
LZS-A2 M6	55111	12	45	100	400
LZS-A2 M8	55112	14	55	50	200

LZS

Heavy Duty Sleeve Anchor

Main Material

- Concrete
- Hard Naturel Stone

Application Field

- Steel Structures
- Fences
- Handtrails
- Machines
- Cantilevers

LZS

Zinc Plated

LZS-A2

Stainless Steel

Complementary Products



page 99



page 35



page 35



Chemical Anchors

Heavy Duty Anchors

General Purpose Fasteners

Frame Anchors

Aerated Concrete Anchors

Drywall Anchors

Nailing Systems

Insulation Anchors

Screws

Drill Bits

Scaffold Fasteners

Solar System Fasteners

Special Fixing





Chemical Anchors

SM

Nylon Plug

Heavy Duty Anchors

Main Material

- Concrete
- Natural Stone
- Hollow Brick
- Solid Brick
- Bims
- Asphalt

General Purpose Fasteners

Frame Anchors

Application Field

- Shelves
- Frames
- Lamps
- Electrical Installation
- Bathroom Accessories
- Assembly Of Various Lightweight loads

Aerated Concrete Anchors

Drywall Anchors

SM

Application

Nailing Systems

Insulation Anchors

SM

Plug

Screws

Drill Bits

Scaffold Fasteners

Solar System Fasteners

Special Fixing



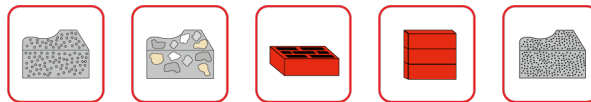
Complementary Products



page 99

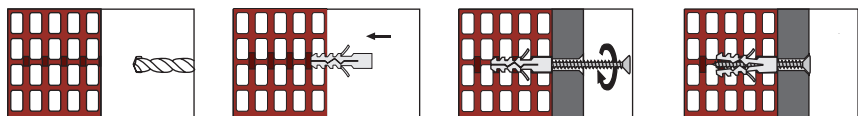


page 100



PA6
PURE NYLON

- Provides high grip due to its high-grade nylon construction
- Meets a variety of fundamental lightweight load requirements
- Prevents rotation with its flaps



Product	Art. No.	Hole Diameter	Anchor Length	Screw Diameter	Qty Per Box	Qty Per Carton
SM 4	41119	4	20	3	200	6400
SM 5	41110	5	25	4	200	6400
SM 6	41111	6	30	4,5	200	6400
SM 7	41112	7	30	5	100	3200
SM 8	41113	8	40	5 - 6	100	3200
SM 10	41114	10	50	6 - 7	50	1600
SM 12	41116	12	60	8	25	800
SM 14	41117	14	80	10	25	800
SM 14x100	41118	14	100	10	25	800



Product	Art. No.	Hole Diameter	Anchor Length	Screw	Qty Per Box
SM 5	41100	5	25	4	4000
SM 6	41101	6	30	4,5	4000
SM 8	41103	8	40	5 - 6	2000
SM 10	41104	10	50	6 - 7	1000
SM 12	41106	12	60	8	500
SM 14	41107	14	80	10	500



Product	Art. No.	Hole Diameter	Anchor Length	Screw	Qty Per Box	Qty Per Carton
SM 4	41129	4	20	3 x 25	200	6400
SM 5	41120	5	25	4 x 30	100	3200
SM 6	41121	6	30	4,5 x 40	100	3200
SM 7	41122	7	30	5 x 40	50	1600
SM 8	41123	8	40	5 x 50	50	1600
SM 10	41124	10	50	6 x 60	25	800



Product	Art. No.	Hole Diameter	Anchor Length	Screw	Qty Per Box	Qty Per Carton
SM 4	41139	4	20	3 x 25	200	6400
SM 5	41130	5	25	4 x 30	100	3200
SM 6	41131	6	30	4,5 x 40	100	3200
SM 7	41132	7	30	5 x 40	50	1600
SM 8	41133	8	40	5 x 50	50	1600
SM 10	41134	10	50	6 x 60	25	800



Product	Art. No.	Hole Diameter	Anchor Length	Screw	Qty Per Box	Qty Per Carton
SM 4	41149	4	20	3 x 25	200	6400
SM 5	41140	5	25	4 x 30	100	3200
SM 6	41141	6	30	4,5 x 40	100	3200
SM 7	41142	7	30	5 x 40	50	1600
SM 8	41143	8	40	5 x 50	50	1600
SM 10	41144	10	50	6 x 60	25	800

SM

Plug Big Box

SM

Without Flange,
Countersunk Head Screw

SM

Without Flange,
Countersunk Head
Stainless Steel Screw

SM

Without Flange,
Pan Head Screw

Complementary Products



page 99



page 100



Chemical Anchors

Heavy Duty Anchors

General Purpose Fasteners

Frame Anchors

Aerated Concrete Anchors

Drywall Anchors

Nailing Systems

Insulation Anchors

Screws

Drill Bits

Scaffold Fasteners

Solar System Fasteners

Special Fixing

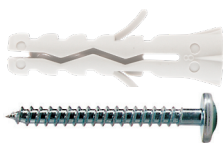




Chemical Anchors

SM

Pan Head Stainless Steel
Screw, Without Flange



Product	Art. No.	Hole Diameter	Anchor Length	Screw	Qty Per Box	Qty Per Carton
SM 4	41159	4	20	3 x 25	200	6400
SM 5	41150	5	25	4 x 30	100	3200
SM 6	41151	6	30	4,5 x 40	100	3200
SM 7	41152	7	30	5 x 40	50	1600
SM 8	41153	8	40	5 x 50	50	1600
SM 10	41154	10	50	6 x 60	25	800

Heavy Duty Anchors

General Purpose Fasteners

Frame Anchors

SM

Flanged, Without Screw



Product	Art. No.	Hole Diameter	Anchor Length	Screw	Qty Per Box	Qty Per Carton
SM 5	41190	5	25	4	100	3200
SM 6	41191	6	30	4,5	100	3200
SM 8	41193	8	40	4 - 6	50	1600
SM 10	41194	10	50	6 - 7	25	800

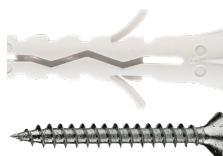
Aerated Concrete Anchors

Drywall Anchors

Nailing Systems

SM

Flanged, Countersunk Head Screw



Product	Art. No.	Hole Diameter	Anchor Length	Screw	Qty Per Box	Qty Per Carton
SM 5	41180	5	25	4	100	3200
SM 6	41181	6	30	4,5	100	3200
SM 8	41183	8	40	4 - 6	50	1600
SM 10	41184	10	50	6 - 7	25	800

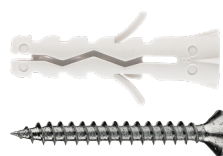
Insulation Anchors

Screws

Drill Bits

SM

Flanged, Countersunk Head
Stainless Steel Screw



Product	Art. No.	Hole Diameter	Anchor Length	Screw	Qty Per Box	Qty Per Carton
SM 5	41170	5	25	4	100	3200
SM 6	41171	6	30	4,5	100	3200
SM 8	41173	8	40	4 - 6	50	1600
SM 10	41174	10	50	6 - 7	25	800

Scaffold Fasteners

Solar System Fasteners

Complementary Products



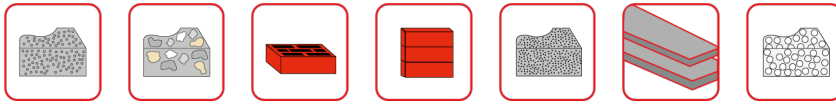
page 99



page 100

Special Fixing

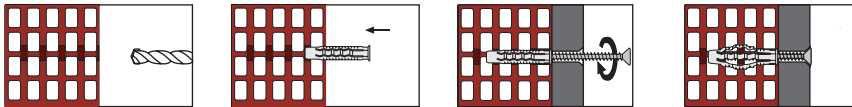




PA6
PURE NYLON



- High hold performance thanks to the wings that open in four different directions
- High-grade nylon material
- Flexible structure
- Upper wings that prevent twisting



Product	Art. No.	Hole Diameter	Anchor Length	Screw Diameter	Qty Per Box	Qty Per Carton
GL 5	41211	5	25	4	200	6400
GL 6	41212	6	30	4,5	200	6400
GL 6x45	41217	6	45	4,5	200	6400
GL 8	41213	8	40	5 - 6	100	3200
GL 8x50	41218	8	50	5 - 6	75	2400
GL 10	41214	10	50	6 - 7	50	1600
GL 12	41215	12	60	8	25	800
GL 14	41216	14	70	10	25	800

GL

Universal Nylon Plug
Four-Sided Expansion

Main Material

- Concrete
- Naturel Stone
- Hollow Brick
- Solid Brick
- Bims
- Asphalt
- Drywalls
- Aerated Concrete

Application Field

- Furnitures
- Shelves
- Frames
- Lamps
- Electrical Equipment
- Bathroom Accessories
- Assembly Of Various Lightweight Loads

GL

Application

GL

Plug

Complementary Products



page 99



page 100



Chemical Anchors

Heavy Duty Anchors

General Purpose Fasteners

Frame Anchors

Aerated Concrete Anchors

Drywall Anchors

Nailing Systems

Insulation Anchors

Screws

Drill Bits

Scaffold Fasteners

Solar System Fasteners

Special Fixing





Chemical Anchors

GL

Plug Bulk Package

Heavy Duty Anchors

General Purpose Fasteners

Frame Anchors

GL

Countersunk Screw

Aerated Concrete Anchors

Drywall Anchors

Nailing Systems

GL

Countersunk

Stainless Steel Screw

Insulation Anchors

Screws

Drill Bits

Scaffold Fasteners

Solar System Fasteners

Complementary Products

Special Fixing



page 99



page 100



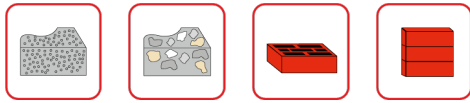
Product	Art. No.	Hole Diameter	Anchor Length	Screw Diameter	Qty Per Package
GL 5	41221	5	25	4	4000
GL 6	41222	6	30	4,5	4000
GL 6	41227	6	45	4,5	4000
GL 8	41223	8	40	5 - 6	2000
GL 8x50	41228	8	50	5 - 6	2000
GL 10	41224	10	50	6 - 7	1000
GL 12	41225	12	60	8	500
GL 14	41226	14	70	10	500



Product	Art. No.	Hole Diameter	Anchor Length	Screw	Qty Per Box	Qty Per Carton
GL 5	41241	5	25	4 x 30	100	3200
GL 6	41242	6	30	4,5 x 40	100	3200
GL 8	41243	8	40	5 x 50	50	1600
GL 10	41244	10	50	6 x 60	25	800



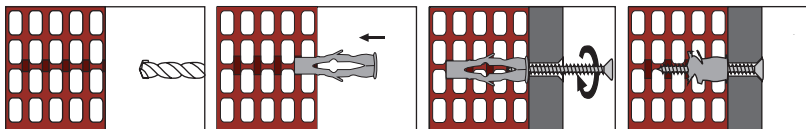
Product	Art. No.	Hole Diameter	Anchor Length	Screw	Qty Per Box	Qty Per Carton
GL 5	41251	5	25	4 x 30	100	3200
GL 6	41252	6	30	4,5 x 40	100	3200
GL 8	41253	8	40	5 x 50	50	1600
GL 10	41254	10	50	6 x 60	25	800



PA6
PURE NYLON



- High grip due to wide-opening flaps expanding in two different directions
- Knot formation in hollow structures
- High-grade nylon material
- Flexible Structure
- Upper flange that prevent rotation



Product	Art. No.	Hole Diameter	Anchor Length	Screw Diameter	Qty Per Box	Qty Per Carton
GBU 6	47101	6	40	3,5 - 4	200	6400
GBU 8	47102	8	50	4,5 - 5	100	3200
GBU 10	47103	10	60	6 - 7	50	1600



Product	Art. No.	Hole Diameter	Anchor Length	Screw Diameter	Qty Per Box
GBU 6	47104	6	40	3,5 - 4	4000
GBU 8	47105	8	50	4,5 - 5	2000
GBU 10	47106	10	60	6 - 7	1000

GBU

Multi-directional Nylon Plug

Main Material

- Concrete
- Naturel Stone
- Hollow Brick
- Solid Brick

Application Field

- Furnitures
- Shelves
- Frames
- Lamps
- Electrical Equipment
- Bathroom Accessories
- Assembly Of Various Lightweight Loads

GBU

Application

GBU

Only Plug

GBU

Only Plug, Big Box

Complementary Products



page 99



page 100



Chemical Anchors

Heavy Duty Anchors

General Purpose Fasteners

Frame Anchors

Aerated Concrete Anchors

Drywall Anchors

Nailing Systems

Insulation Anchors

Screws

Drill Bits

Scaffold Fasteners

Solar System Fasteners

Special Fixing





Chemical Anchors

BFIX

Multi-directional Nylon Plug

Heavy Duty Anchors

Main Material

- Concrete
- Naturel Stone
- Hollow Brick
- Solid Brick
- Bims
- Asphalt
- Drywalls
- Aerated Concrete

General Purpose Fasteners

Frame Anchors

Application Field

- Furnitures
- Shelves
- Frames
- Lamps
- Electrical Equipment
- Bathroom Accessories
- Assembly Of Various Lightweight Loads

Aerated Concrete Anchors

Drywall Anchors

Nailing Systems

Insulation Anchors

BFIX

Application

Screws

Drill Bits

BFIX

Plug

Solar System Fasteners

Complementary Products

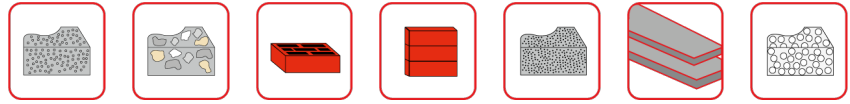


page 99

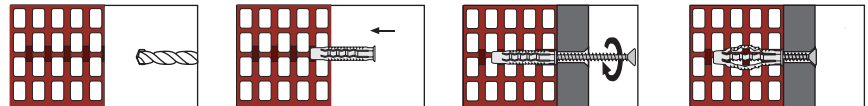


page 100

Special Fixing



- High hold performance thanks to the wings that open in four different directions special two material body is great for hoolow base materials.
- High-grade nylon material
- Flexible structure
- Upper wings that prevent twisting



Product	Art. No.	Hole Diameter	Plug Length	Screw Diameter	Qty Per Box	Qty Per Carton
BFIX 5	41251	5	27	3 - 4	200	6400
BFIX 6	41252	6	35	4 - 5	200	6400
BFIX 8	41253	8	45	4,5 - 6	100	2000
BFIX 10	41254	10	50	6 - 8	50	1000



Product	Art. No.	Hole Diameter	Plug Length	Screw Diameter	QTY Per Package
BFIX 5	41255	5	27	3 - 4	4000
BFIX 6	41256	6	35	4 - 5	4000
BFIX 8	41257	8	45	4,5 - 6	2000
BFIX 10	41258	10	50	6 - 8	1000



Product	Art. No.	Hole Diameter	Plug Length	Screw Diameter	Qty Per Box	Qty Per Carton
BFIX 5	41259	5	27	3 - 4	100	3200
BFIX 6	41260	6	35	4 - 5	100	3200
BFIX 8	41261	8	45	4,5 - 6	50	1600
BFIX 10	41262	10	50	6 - 8	25	800



Product	Art. No.	Hole Diameter	Plug Length	Screw	Qty Per Box	Qty Per Carton
BFIX 5	41263	5	25	3 - 4	100	3200
BFIX 6	41264	6	30	4 - 5	100	3200
BFIX 8	41265	8	40	4,5 - 6	50	1600
BFIX 10	41266	10	50	6 - 8	25	800

BFIX

Plug Big Box

BFIX

Countersunk Screw

BFIX

Countersunk

Stainless Steel Screw

Complementary Products



page 99



page 100



Chemical Anchors

Heavy Duty Anchors

General Purpose Fasteners

Frame Anchors

Aerated Concrete Anchors

Drywall Anchors

Nailing Systems

Insulation Anchors

Screws

Drill Bits

Scaffold Fasteners

Solar System Fasteners

Special Fixing





Chemical Anchors

TJC

Hammer-in Nylon Plug

Heavy Duty Anchors

Main Material

- Concrete
- Naturel Stone
- Hollow Brick
- Solid Brick

General Purpose Fasteners

Application Field

- Drywalls
- Frames
- Lamps
- Electrical Equipment
- Bathroom Accessories
- Assembly Of Various Lightweight Loads

Frame Anchors

Aerated Concrete Anchors

Drywall Anchors

Nailing Systems

Insulation Anchors

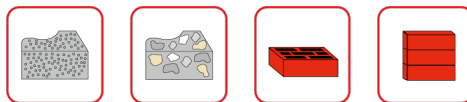
Screws

Drill Bits

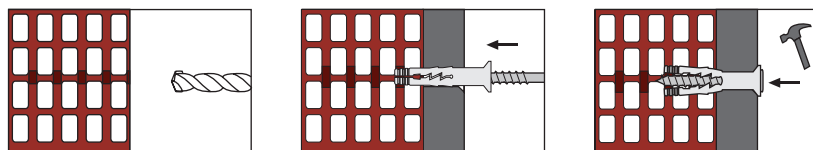
Scaffold Fasteners

Solar System Fasteners

Special Fixing



- Special design that does not require screwing
- Quick assembly with hammering
- High-grade nylon construction
- Flexible design
- Removable with a screwdriver



TJC

Application

TJC

Zinc plated

Complementary Products



page 99



page 100

Product	Art. No.	Hole Diameter	Anchor Length	Screw Diameter	Qty Per Box	Qty Per Carton
TJC 5x27	93025	5	27	3,5 x 32	200	2400
TJC 5x37	93026	5	37	3,5 x 42	200	2400
TJC 5x47	93027	5	47	3,5 x 52	200	2400
TJC 6x32	93028	6	32	3,8 x 37	200	2400
TJC 6x40	93029	6	40	3,8 x 45	200	2400
TJC 6x55	93030	6	55	3,8 x 60	100	1200
TJC 6x67	93031	6	67	3,8 x 72	100	1200
TJC 6x80	93032	6	80	3,8 x 85	100	1200
TJC 8x45	93033	8	45	4,8 x 50	100	1200
TJC 8x60	93034	8	60	4,8 x 65	50	600
TJC 8x75	93035	8	75	4,8 x 80	100	800
TJC 8x100	93036	8	100	4,8 x 105	50	400
TJC 8x120	93037	8	120	4,8 x 125	50	400
TJC 8x135	93038	8	135	4,8 x 140	50	400

TJC-A2

Stainless Steel

Product	Art. No.	Hole Diameter	Anchor Length	Screw Diameter	Qty Per Box	Qty Per Carton
TJC-A2 5x27	93045	5	27	3,5 x 32	200	2400
TJC-A2 5x37	93046	5	37	3,5 x 42	200	2400
TJC-A2 5x47	93047	5	47	3,5 x 52	200	2400
TJC-A2 6x32	93048	6	32	3,8 x 37	200	2400
TJC-A2 6x40	93049	6	40	3,8 x 45	200	2400
TJC-A2 6x55	93050	6	55	3,8 x 60	100	1200
TJC-A2 6x67	93051	6	67	3,8 x 72	100	1200
TJC-A2 6x80	93052	6	80	3,8 x 85	100	1200
TJC-A2 8x45	93053	8	45	4,8 x 50	100	1200
TJC-A2 8x60	93054	8	60	4,8 x 65	50	600
TJC-A2 8x75	93055	8	75	4,8 x 80	100	800
TJC-A2 8x100	93056	8	100	4,8 x 105	50	400
TJC-A2 8x120	93057	8	120	4,8 x 125	50	400
TJC-A2 8x135	93058	8	135	4,8 x 140	50	400



Chemical Anchors

Heavy Duty Anchors

General Purpose Fasteners

Frame Anchors

Aerated Concrete Anchors

Drywall Anchors

Nailing Systems

Insulation Anchors

Screws

Drill Bits

Scaffold Fasteners

Solar System Fasteners

Special Fixing



Complementary Products



page 99



page 100



Chemical Anchors

EMR

Floating Shelf Bracket

Heavy Duty Anchors

Main Material

- Concrete
- Naturel Stone
- Hollow Brick
- Solid Brick
- Aerated Concrete

General Purpose Fasteners

Application Field

- Drywalls
- Frames
- Lamps
- Electrical Equipment
- Bathroom Accessories
- Assembly Of Various Lightweight Loads

Frame Anchors

Aerated Concrete Anchors

Drywall Anchors

Nailing Systems

Insulation Anchors

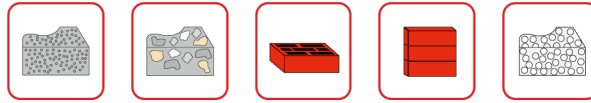
Screws

Drill Bits

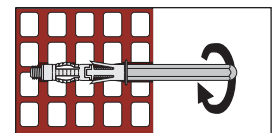
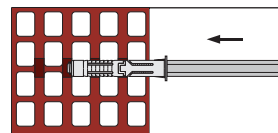
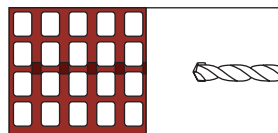
Scaffold Fasteners

Solar System Fasteners

Special Fixing



- Provides adjustable grip with multi-directional opening during pulling
- Designed for shelf mounting compatible with hidden plug in EMR version
- In the EMR version, the protruding metal part remains inside the shelf
- Suitable for light load connections using screws



EMR

Application

EMR

8 / 10

Technical Information

Product	Art.No.	Hole Diameter	Anchor Length	Shelf Hole Diameter	Steel Bar Length	Wrench Size	Qty Per Box	Qty Per Carton
EMR 100	61614	12	65	10	100	9	40	160
EMR 150	61615	12	65	10	150	9	40	160

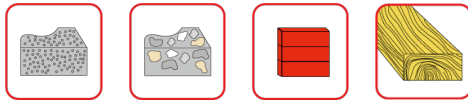
Complementary Products



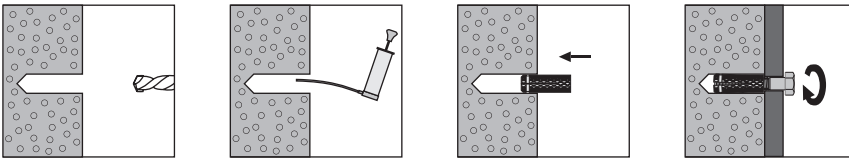
page 99



page 100



- High corrosion resistance due to brass body
- Non-rotating design with ribbed structure provides better grip even on the weakest base materials.



Product	Art. No.	Hole Diameter	Anchor Length	Qty Per Box	Qty Per Carton
BMA M4	79011	5	15	200	1600
BMA M5	79012	6	18	200	1600
BMA M6	79013	8	22	200	1600
BMA M8	79014	10	28	200	1600
BMA M10	79015	12	32	100	800
BMA M12	79016	15	37	50	400
BMA M16	79017	20	43	25	200

BMA

Brass Anchor

Main Material

- Concrete
- Naturel Stone
- Solid Brick
- Wood

Application Field

- Shelves
- Handrails
- Cantilevers

BMA

Application

BMA

Technical Information

Complementary Products



[page 99](#)



[page 100](#)



Chemical Anchors

Heavy Duty Anchors

General Purpose Fasteners

Frame Anchors

Aerated Concrete Anchors

Drywall Anchors

Nailing Systems

Insulation Anchors

Screws

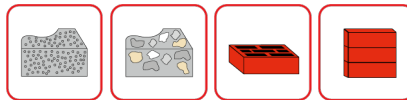
Drill Bits

Scaffold Fasteners

Solar System Fasteners

Special Fixing





- Wide surface grip due to the long opening area
- Wings that open when the screw is tightened
- High strength
- Single-stage assembly
- Quick assembly
- Torx socket with countersunk head

Product	Art. No.	Hole Diameter	Anchor Length	Wrench Size	Screw Diameter	Qty Per Box
SVF A4 10x80	49201	10	80	T40	7x87	50
SVF A4 10x100	49202	10	100	T40	7x107	50
SVF A4 10x120	49203	10	120	T40	7x127	50
SVF A4 10x140	49204	10	140	T40	7x147	25
SVF A4 10x160	49205	10	160	T40	7x167	25
SVF A4 10x180	49206	10	180	T40	7x187	25
SVF A4 10x200	49207	10	200	T40	7x207	25
SVF A4 10x230	49208	0	230	T40	7x237	25

Product	Art. No.	Hole Diameter	Anchor Length	Wrench Size	Screw Diameter	Qty Per Box
SVF 8x80	49101	8	80	T30	5,5x87	100
SVF 8x100	49102	8	100	T30	5,5x107	100
SVF 8x120	49103	8	120	T30	5,5x127	50
SVF 8x140	49104	8	140	T30	5,5x147	50
SVF 10x80	49105	10	80	T40	7x87	100
SVF 10x100	49106	10	100	T40	7x107	50
SVF 10x120	49107	10	120	T40	7x127	50
SVF 10x140	49108	10	140	T40	7x147	25
SVF 10x160	49109	10	160	T40	7x167	25
SVF 10x180	49110	10	180	T40	7x187	25
SVF 10x200	49111	10	200	T40	7x207	25
SVF 10x230	49112	10	230	T40	7x237	25
SVF 10x260	49113	10	260	T40	7x267	25
SVF 10x300	49114	10	300	T40	7x307	25



Chemical Anchors

SVF

Frame Plug

Heavy Duty Anchors

Main Material

- Concrete
- Natural Stone
- Hollow Brick
- Solid Brick

General Purpose Fasteners

Frame Anchors

Application Field

- Gypsum Board / Drywall Profiles
- Frame
- Lighting Fixtures
- Electrical Equipment
- Bathroom Accessories
- All Types of Light Load Installation

Aerated Concrete Anchors

Drywall Anchors

SVF A4

Stainless Steel

Nailing Systems

Insulation Anchors

Screws

SVF

Zinc Plated

Drill Bits

Scaffold Fasteners

Solar System Fasteners

Special Fixing



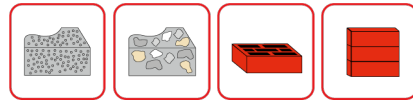
Complementary Products



page 99



page 100



- Wide surface grip due to the long opening area
- Wings that open when the screw is tightened
- High strength
- Single-stage assembly
- Quick assembly
- Torx socket

SVF-S

Frame Plug With Hex
Flanged Screw

Main Material

- Concrete
- Natural Stone
- Hollow Brick
- Solid Brick

Application Field

- Gypsum Board / Drywall Profiles
- Frame
- Lighting Fixtures
- Electrical Equipment
- Bathroom Accessories
- All Types of Light Load Installation

SVF-S A4

Stainless Steel

SVF-S

Zinc Plated

Product	Art. No.	Hole Diameter	Anchor Length	Wrench Size	Screw Diameter	Qty Per Box
SVF-S A4 10x80	49401	10	80	SW13-T40	7x87	50
SVF-S A4 10x100	49402	10	100	SW13-T40	7x107	50
SVF-S A4 10x120	49403	10	120	SW13-T40	7x127	50
SVF-S A4 10x140	49404	10	140	SW13-T40	7x147	50
SVF-S A4 10x160	49405	10	160	SW13-T40	7x167	50

Product	Art. No.	Hole Diameter	Anchor Length	Wrench Size	Screw Diameter	Qty Per Box
SVF-S 10x100	49301	10	80	SW13-T40	7x87	50
SVF-S 10x100	49302	10	100	SW13-T40	7x107	50
SVF-S 10x120	49303	10	120	SW13-T40	7x127	50
SVF-S 10x140	49304	10	140	SW13-T40	7x147	50
SVF-S 10x160	49305	10	160	SW13-T40	7x167	50
SVF-S 10x180	49306	10	180	SW13-T40	7x187	25
SVF-S 10x200	49307	10	200	SW13-T40	7x207	25
SVF-S 10x230	49308	10	230	SW13-T40	7x237	25
SVF-S 10x260	49309	10	260	SW13-T40	7x267	25
SVF-S 10x300	49310	10	300	SW13-T40	7x307	25

Complementary Products



page 99



page 100



Chemical Anchors

Heavy Duty Anchors

General Purpose Fasteners

Frame Anchors

Aerated Concrete Anchors

Drywall Anchors

Nailing Systems

Insulation Anchors

Screws

Drill Bits

Scaffold Fasteners

Solar System Fasteners

Special Fixing





Chemical Anchors

Heavy Duty Anchors

General Purpose Fasteners

Frame Anchors

Aerated Concrete Anchors

Drywall Anchors

Nailing Systems

Insulation Anchors

Screws

Drill Bits

Scaffold Fasteners

Solar System Fasteners

Special Fixing



SVF-SS

Flanged Frame Plug With Hex

Flanged Screw

Main Material

- Concrete
- Naturel Stone
- Hollow Brick
- Solid Brick

Application Field

- Gypsum Board / Drywall Profiles
- Frame
- Lighting Fixtures
- Electrical Equipment
- Bathroom Accessories
- All Types of Light Load Installation

SVF-SS A4

Stainless Steel

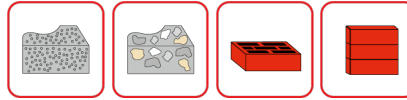
Complementary Products



page 99



page 100



- Wide surface grip due to the long opening area
- Wide surface pressing with the flanged head
- Wings that open when the screw is tightened
- High strength
- Single-stage assembly
- Quick assembly
- Torx socket

Product	Art. No.	Hole Diameter	Anchor Length	Screw Diameter	Qty Per Box
SVF-SS A4 10x80	49601	10	80	7x87	50
SVF-SS A4 10x100	49602	10	100	7x107	50
SVF-SS A4 10x120	49603	10	120	7x127	50
SVF-SS A4 10x140	49604	10	140	7x147	25
SVF-SS A4 10x160	49605	10	160	7x167	25
SVF-SS A4 10x180	49607	10	180	7x187	25
SVF-SS A4 10x200	49608	10	200	7x207	25
SVF-SS A4 10x230	49609	10	230	7x237	25
SVF-SS A4 10x260	49610	10	260	7x267	25
SVF-SS A4 10x300	49611	10	300	7x307	25

Product	Art. No.	Hole Diameter	Anchor Length	Screw Diameter	Qty Per Box
SVF-SS 8x80	49501	8	80	5,5x87	100
SVF-SS 8x100	49502	8	100	5,5x107	100
SVF-SS 8x120	49503	8	120	5,5x127	50
SVF-SS 8x140	49504	8	140	5,5x	50
SVF-SS 10x60	49505	10	60	5,5x	50
SVF-SS 10x80	49506	10	80	5,5x	50
SVF-SS 10x100	49507	10	100	7x107	50
SVF-SS 10x120	49508	10	120	7x127	50
SVF-SS 10x140	49509	10	140	7x147	25
SVF-SS 10x160	49510	10	160	7x167	25
SVF-SS 10x180	49511	10	180	7x187	25
SVF-SS 10x200	49512	10	200	7x207	25
SVF-SS 10x230	49513	10	230	7x237	25
SVF-SS 10x260	49514	10	260	7x267	25
SVF-SS 10x300	49515	0	300	7x307	25

SVF-SS

Zinc Plated

Complementary Products



page 99



page 100



Chemical Anchors

Heavy Duty Anchors

General Purpose Fasteners

Frame Anchors

Aerated Concrete Anchors

Drywall Anchors

Nailing Systems

Insulation Anchors

Screws

Drill Bits

Scaffold Fasteners

Solar System Fasteners

Special Fixing





Chemical Anchors

GBM

Aerated Concrete Plug

Heavy Duty Anchors

Main Material

- Aerated Concrete

General Purpose Fasteners

Application Field

- Electrical Installation
- Mecanic Installation
- Hangers and Supports
- Shelves
- Curtains
- Lamps

Frame Anchors

Aerated Concrete Anchors

Drywall Anchors

Nailing Systems

Insulation Anchors

GBM

Application

Screws

Drill Bits

GBM

Technical Information

Scaffold Fasteners

Solar System Fasteners

Complementary Products

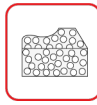


page 99

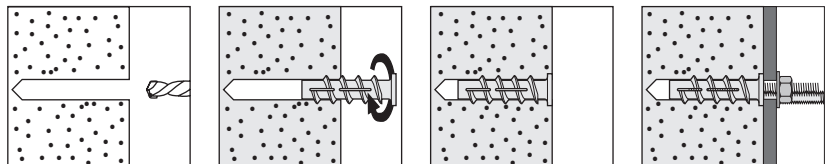


page 100

Special Fixing

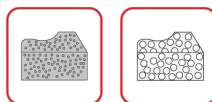


- Threads provide a structural connection
- Assembly can be done using a mounting tool or hex key bit
- Use with bolts, rods, or screws ranging from M6 to M10

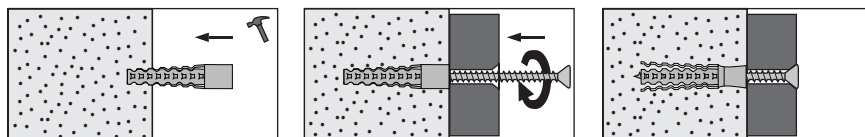


Product	Art. No.	Hole Diameter	Anchor Length	Screw Diameter	Qty Per Box	Qty Per Carton
GBM 6	41511	10	56	M6	40	1280
GBM 8	41512	12	60	M8	20	640
GBM 10	41513	14	70	M10	10	320

Product	Art. No.	Hole Diameter	Anchor Length	Screw Diameter	Qty Per Box
GBM 6	41511	10	56	M6	1000
GBM 8	41512	12	60	M8	500
GBM 10	41513	14	70	M10	250



- Threads provide a mechanical connection
- The anchor is opened while the screw is being inserted
- Assembly is done by driving in without drilling a hole in the gas concrete



Product	Art. No.	Anchor Length	Screw Diameter	Qty Per Box	Qty Per Carton
GBK 5x30	41531	30	4 - 5	200	6400
GBK 6x32	41532	32	5 - 6	200	6400
GBK 8x38	41533	38	6 - 8	100	3200
GBK 8x60	41534	60	6 - 8	50	1600
GBK 10x60	41535	60	8 - 10	50	1600

GBK

Metal Aerated Concrete Anchor

Main Material

- Aerated Concrete
- Concrete

Application Field

- Electrical Installation
- Mechanical Installation
- Suspended Ceiling
- Hangers And Supports
- Shelves
- Drapes
- Lamps

GBK

Application

GBK

Technical Information

Complementary Products



page 99



page 100



Chemical Anchors

Heavy Duty Anchors

General Purpose Fasteners

Frame Anchors

Aerated Concrete Anchors

Drywall Anchors

Nailing Systems

Insulation Anchors

Screws

Drill Bits

Scaffold Fasteners

Solar System Fasteners

Special Fixing

Special Fixing





Chemical Anchors

HTM

Metal Drywall Anchor

Heavy Duty Anchors

Main Material

- Drywall
- Particle Board
- Fibre Board
- Aerated Concrete Wall and Roof

General Purpose Fasteners

Application Field

- Wall Protection Barrier
- Shelves
- Hangers
- Curtains

Frame Anchors

Aerated Concrete Anchors

Drywall Anchors

HTM

Application

Nailing Systems

Insulation Anchors

HTM

Technical Information

Screws

Drill Bits

Scaffold Fasteners

Solar System Fasteners

Complementary Products

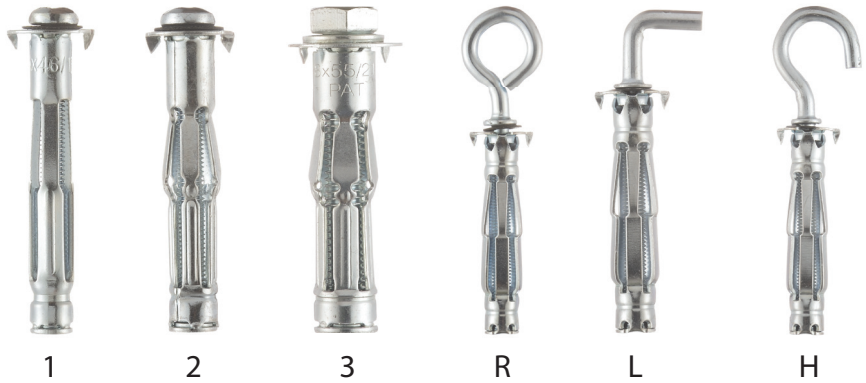
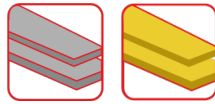


page 99

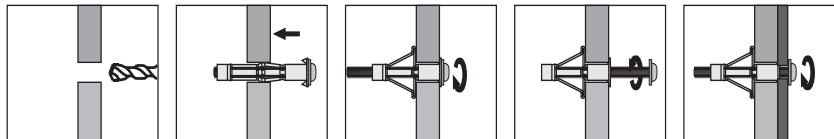


page 100

Special Fixing



- The anchor expands in the cavity to grip the plate from behind.
- Easy installation with anti-rotation tabs.
- Available in varieties suitable for all plate thicknesses.
- Simple installation with a mounting clamp.



Product	Art. No.	Hole Diameter	Body Length	Screw Length	Plate Thickness	Anchor Type	Qty Per Box
HTM 4x32	71011	8	32	41	4 - 9	2	100
HTM 4x38	71012	8	38	47	9 - 16	2	100
HTM 4x46	71010	8	46	54	3 - 18	1	100
HTM 4x59	71013	8	59	67	32-38	2	100
HTM 5x37	71021	10	37	43	5 - 13	2	50
HTM 5x52	71022	10	52	60	5 - 18	2	50
HTM 5x65	71023	10	65	74	18 - 32	2	50
HTM 6x37	71031	12	37	45	5 - 12	2	50
HTM 6x52	71032	12	52	60	5 - 16	2	50
HTM 6x65	71033	12	65	74	16 - 32	2	50
HTM 8x55	71034	14	55	65	5 - 16	3	25



Product	Art. No.	Hole Diameter	Body Length	Screw Type	Plate Thickness	Anchor Type	Qty Per Box
HTM-L 4x46	71041	8	46	L kancalı	3-18	L	50
HTM-L 5x57	71042	10	57	L kancalı	5-18	L	25



Product	Art. No.	Hole Diameter	Body Length	Screw Type	Plate Thickness	Anchor Type	Qty Per Box
HTM-R 4x46	71043	8	46	Kapalı kancalı	3-18	R	50
HTM-R 5x57	71044	10	57	Kapalı kancalı	5-18	R	25



Product	Art. No.	Hole Diameter	Body Length	Screw Type	Plate Thickness	Anchor Type	Qty Per Box
HTM-H 4x46	71045	8	46	Açık kancalı	3-18	H	50
HTM-H 5x57	71046	10	57	Açık kancalı	5-18	H	25

Product	Art. No.
HT-01 AUTO	71050
HT-02	71060



HT-02



HT-01

HTM-L

Technical Information

HTM-R

Technical Information

HTM-H

Technical Information

HT

Quick Installation Tool For
HTM Anchors

Complementary Products



page 99



page 100



Chemical Anchors

Heavy Duty Anchors

General Purpose Fasteners

Frame Anchors

Aerated Concrete Anchors

Drywall Anchors

Nailing Systems

Insulation Anchors

Screws

Drill Bits

Scaffold Fasteners

Solar System Fasteners

Special Fixing





Chemical Anchors

HTZ

Toggle Anchors

Heavy Duty Anchors

Main Material

- Drywall
- Particle Board
- Fibre Board
- Aerated Concrete Wall and Roof

General Purpose Fasteners

Application Field

- Mechanical Installation
- Electrical Installation
- Lamps
- Shelves
- Wardrobe
- Wall Protection Barrier

Frame Anchors

Aerated Concrete Anchors

Drywall Anchors

Nailing Systems

Insulation Anchors

Screws

HTZ

Application

Drill Bits

Scaffold Fasteners

Solar System Fasteners

Complementary Products

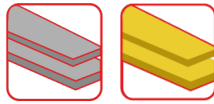


page 99

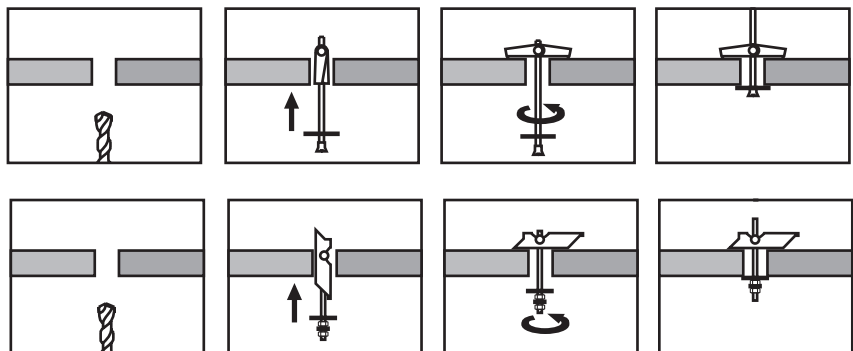


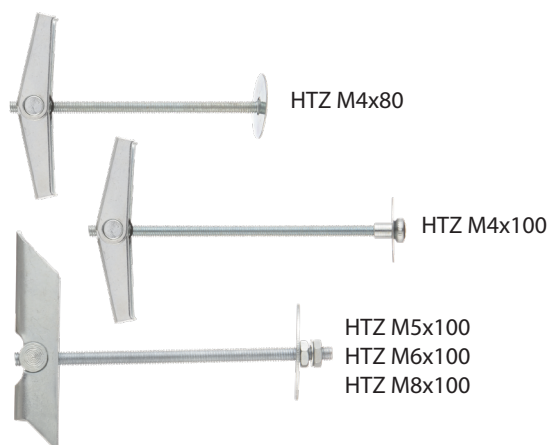
page 100

Special Fixing



- The anchor expands in the cavity to securely grip the plate from behind
- Easy installation with anti-rotation tabs
- Available in varieties suitable for all types of plate thicknesses
- Simple installation with a mounting clamp





Product	Art. No.	Hole Diameter	Anchor Length	Min. Clearance Length	Wrench Size	Qty Per Box
HTZ M4x80	71111	14	80	34	PH2	50
HTZ M4x100	71114	14	100	34	PH2	50
HTZ M5x100	71141	16	100	70	8	50
HTZ M6x100	71121	16	100	70	10	50
HTZ M8x100	71131	20	100	75	13	25



Product	Art. No.	Hole Diameter	Anchor Length	Min. Clearance Length	Wrench Size	Qty Per Box
HTZ-H M4	71112	14	95	34	7	50
HTZ-H M5	71143	16	130	70	8	50
HTZ-H M6	71122	16	130	70	10	50



Product	Art. No.	Hole Diameter	Anchor Length	Min. Clearance Length	Wrench Size	Qty Per Box
HTZ-R M4	71113	14	100	34	7	50

HTZ-M

HTZ-H

With Open Eye Screw

HTZ-R

With Closed Eye Screw



Chemical Anchors

Heavy Duty Anchors

General Purpose Fasteners

Frame Anchors

Aerated Concrete Anchors

Drywall Anchors

Nailing Systems

Insulation Anchors

Screws

Drill Bits

Scaffold Fasteners

Solar System Fasteners

Special Fixing





Chemical Anchors

HX-5

Hammer-in Drywall Anchor

Heavy Duty Anchors

Main Material

- Drywall
- Particle Board
- Fibre Board
- Aerated Concrete

General Purpose Fasteners

Application Field

- Hangers
- Curtains
- Frames

Frame Anchors

Aerated Concrete Anchors

Drywall Anchors

HX-5

Application

Nailing Systems

Insulation Anchors

HX-5

Technical Information

Screws

Drill Bits

Scaffold Fasteners

Solar System Fasteners

Complementary Products



page 99

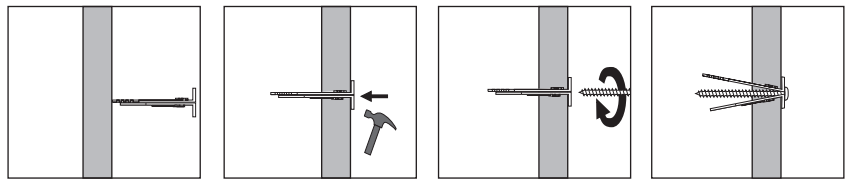


page 100

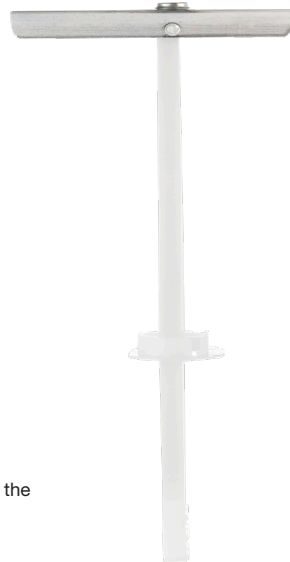
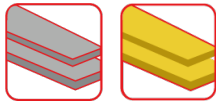
Special Fixing



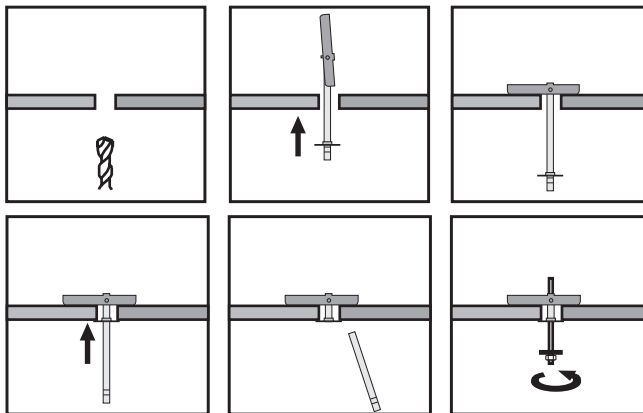
- Installed by hammering into place
- Flange prevents anchor from being countersunk
- Screw centering feature for accurate placement
- Easy and quick installation



Product	Art. No.	Body Length	Qty Per Box	Qty Per Carton
HX-5 12x30	71211	30	200	6400
HX-5 12x40	71212	40	200	6400



- The anchor expands within the cavity to securely grip the plate from behind.
- The plastic flange is tightened to fit into the hole.
- Special plastic arms can be easily bent and broken to create a fixed threaded nut in the wall.
- Installation can be completed using the included screw or any other screw of your choice.
- Available in various types suitable for all plate thicknesses.



Product	Art. No.	Hole Diameter	Screw Length	Qty Per Box	Qty Per Carton
FX-MAX M4	71310	13	-	25	300
FX-MAX M5x60	71323	13	M5x60	25	300
FX-MAX M6x60	71333	13	M6x60	25	300

FX-MAX

Metal Drywall Anchors

Main Material

- Drywall
- Particle Board
- Fibre Board
- Aerated Concrete Wall and Roof

Application Field

- Mechanical Installation
- Electrical Installation
- Lamps
- Shelves
- Wardrobe
- Wall Protection Barrier

FX-MAX

Application

FX-MAX

Technical Information

Complementary Products



page 99



page 100



Chemical Anchors

Heavy Duty Anchors

General Purpose Fasteners

Frame Anchors

Aerated Concrete Anchors

Drywall Anchors

Nailing Systems

Insulation Anchors

Screws

Drill Bits

Scaffold Fasteners

Solar System Fasteners

Special Fixing





Chemical Anchors

GLK

Drywall Anchor

Heavy Duty Anchors

Main Material

- Drywall

General Purpose Fasteners

Application Field

- Lamps
- Bathroom Accessories
- Cable Grooves / Channels
- Drapes
- Shelves

Frame Anchors

Aerated Concrete Anchors

Drywall Anchors

GLK

Application

Nailing Systems

Insulation Anchors

GLK

Without Screw

Screws

Drill Bits

GLK

Countersunk Screw

Scaffold Fasteners

Solar System Fasteners

Complementary Products

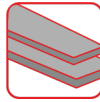


page 99

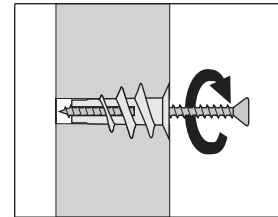
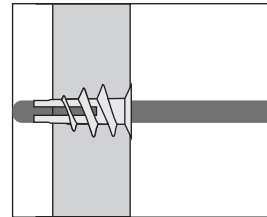
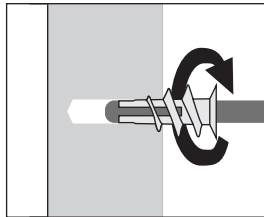


page 100

Special Fixing



- The product threads provide a mechanical connection.
- It is self-drilling and can be assembled using a drill without prior preparation.
- Plastic and metal body.



Product	Art. No.	Body Type	Screw Diameter	Qty Per Box
GLK	71201	Plastic	4,5 - 5	100
GLK M	71202	Metal	4,5	100

Product	Art. No.	Body Type	Screw Diameter	Qty Per Box
GLK 35	71203	Plastic	4,5 x 35	100
GLK 50	71204	Plastic	4,5 x 50	100
GLK M 35	71205	Metal	4,5 x 35	100
GLK M 50	71206	Metal	4,5 x 50	100



Chemical Anchors

FX-40

Battery Concrete Nailer

Heavy Duty Anchors

Main Material

- Concrete
- Steel
- Wood

General Purpose Fasteners

Application Field

- Insulation
- Drywall
- Facades
- Steel Profiles
- Warning Sign Boards
- Tunnels

Frame Anchors

Aerated Concrete Anchors

Drywall Anchors

Nailing Systems

Insulation Anchors

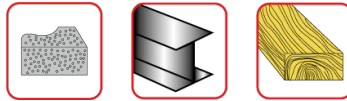
Screws

Drill Bits

Scaffold Fasteners

Solar System Fasteners

Special Fixing



20V BRUSHLESS MOTOR

- The strongest nail gun in its class: 120 Joules
- 20 V Lithium-ion Battery Power
- Brushless Motor Technology
- Nailing Power Adjustable
- Led Light Indicator
- Fast cooling due to powerful fan
- Firing speed up to 90 pcs / min
- Stainless steel dust filter
- Easy magazine removal mechanism
- Easy nail and gas loading mechanism
- Fastener Range : \varnothing 2.6-3mm
- Belt hook accessory
- Nail driving capacity from 16mm to 40mm (5/8"-1 - 5/8")

FX-40

Technical Information

Product	Art. No.	Nail Capacity	Compatible Nail
FX-40	39011	40	GSS,GSX

FX-40

Package Contents

- 1 Vesta Hardcase Professional Bag
- 1 FX-40 nail gun
- 1 Li-ion batteries
- 1 Charger
- 1 Charger cable
- 1 Safety goggles
- 1 Earplugs
- 1 User manual

Complementary Products



page 85



page 85



NO FUEL CELL !!



GSS



GSX

- GSS Nail Wide Diameter: 2.7mm
- GSX Nail Designed for Steel Penetration: 3.0mm Diameter
- High Strength Steel Material
- Coated with White Mechanical Galvanization for Corrosion Resistance
- Nail Length Suitable for Every Application

Product	Art. No.	Body Diameter	Nail Length	Head Diameter	Qty Per Box	Qty Per Carton
GSS 16	32317	2,7	16	6,3	1000	5000
GSS 20	32312	2,7	20	6,3	1000	5000
GSS 25	32313	2,7	25	6,3	1000	5000
GSS 30	32314	2,7	30	6,3	1000	5000
GSS 35	32315	2,7	35	6,3	1000	5000
GSS 40	32316	2,7	40	6,3	1000	5000

Product	Art. No.	Body Diameter	Nail Length	Head Diameter	Qty Per Box	Qty Per Carton
GSX 15	32327	3	15	6,3	1000	5000
GSX 17	32321	3	17	6,3	1000	5000
GSX 19	32322	3	20	6,3	1000	5000
GSX 22	32323	3	25	6,3	1000	5000
GSX 27	32324	3	30	6,3	1000	5000
GSX 32	32325	3	35	6,3	1000	5000
GSX 40	32326	3	40	6,3	1000	5000

GSS-GSX

Concrete Nail

Main Material

- Concrete
- Steel
- Wood

Application Field

- Insulation
- Drywall
- Facades
- Steel profiles
- Warning sign boards
- Tunnel applications

GSS

Steel and High Grade

Concrete Nail

GSX

Steel and High Grade

Concrete Nail



Chemical Anchors

Heavy Duty Anchors

General Purpose Fasteners

Frame Anchors

Aerated Concrete Anchors

Drywall Anchors

Nailing Systems

Insulation Anchors

Screws

Drill Bits

Scaffold Fasteners

Solar System Fasteners

Special Fixing





Chemical Anchors

GSP-GSP-X

Nail

Heavy Duty Anchors

Main Material

- Concrete
- Steel
- Wood

General Purpose Fasteners

Application Field

- Insulation
- Drywall
- Facades
- Steel profiles
- Warning sign boards
- Tunnel applications

Frame Anchors

Aerated Concrete Anchors

Drywall Anchors

GSP

Concrete Nail

Nailing Systems

Insulation Anchors

Screws

GSP-X

Steel and High Grade

Concrete Nail

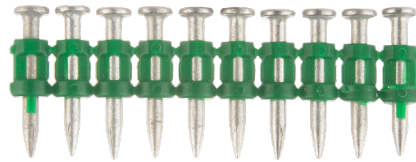
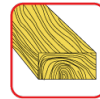
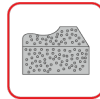
Drill Bits

Scaffold Fasteners

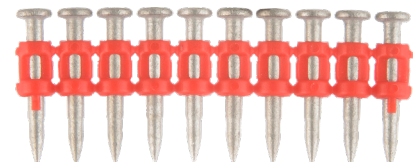
Solar System Fasteners

Complementary Products

Special Fixing



GSP



GSP-X

- Suitable for Dewalt® C5 and Würth® DIGA CS-2 Nailers
- GSP Nail Wide Diameter: 2.7mm
- GSP-X Nail Designed for Steel Penetration: 3.0mm Diameter
- High Strength Steel Material
- Coated with White Mechanical Galvanization for Corrosion Resistance
- Nail Length Suitable for Every Application

Product	Art. No.	Body Diameter	Nail Length	Head Diameter	Qty Per Box	Qty Per Carton
GSP 16	32217	2,7	16	6,3	700	3500
GSP 20	32212	2,7	20	6,3	700	3500
GSP 25	32213	2,7	25	6,3	700	3500
GSP 30	32214	2,7	30	6,3	700	3500
GSP 35	32215	2,7	35	6,3	700	3500
GSP 40	32216	2,7	40	6,3	700	3500

Product	Art. No.	Body Diameter	Nail Length	Head Diameter	Qty Per Box	Qty Per Carton
GSP-X 15	32237	3,0	15	6,3	700	3500
GSP-X 19	32232	3,0	19	6,3	700	3500
GSP-X 22	32233	3,0	22	6,3	700	3500
GSP-X 27	32234	3,0	27	6,3	700	3500
GSP-X 32	32235	3,0	32	6,3	700	3500
GSP-X 40	32236	3,0	40	6,3	700	3500



page 87



Product	Art. No.	Nailers	Body Length
GS 1	31322	Spit® Pulsa	117
GS 2	31323	Universal	154
GS 3	31324	Universal	165
GS 4	31325	Dewalt® C5	154

- Cut to desired length
- Used for piping and electrical connections, where it can be secured with screws or nails
- Can be used as a part of a hanging system



Product	Art. No.	Dimensions	Qty Per Box
CKB 1	31091	10m	10



Product	Art. No.	Body Diameter	Nail Length	Head Diameter	Qty Per Box
DN 16	31101	3,7	16	7,8	100
DN 19	31102	3,7	19	7,8	100
DN 22	31103	3,7	22	7,8	100
DN 27	31104	3,7	27	7,8	100
DN 32	31105	3,7	32	7,8	100
DN 37	31106	3,7	37	7,8	100
DN 42	31107	3,7	42	7,8	100
DN 47	31108	3,7	47	7,8	100
DN 52	31109	3,7	52	7,8	100
DN 62	31110	3,7	62	7,8	100
DN 72	31111	3,7	72	7,8	100

GS

Gas Fuel

CKB

Perforated Assembly Strip

DN

Strip DN Nails

Complementary Products



page 84



page 86



page 86



Chemical Anchors

Heavy Duty Anchors

General Purpose Fasteners

Frame Anchors

Aerated Concrete Anchors

Drywall Anchors

Nailing Systems

Insulation Anchors

Screws

Drill Bits

Scaffold Fasteners

Solar System Fasteners

Special Fixing



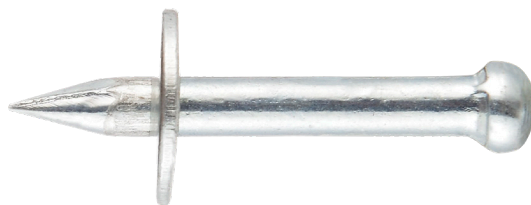


Chemical Anchors

NK

NK Nail With Steel Washer

Heavy Duty Anchors



General Purpose Fasteners

Frame Anchors

Aerated Concrete Anchors

Drywall Anchors

Nailing Systems

NK

Technical Information

Insulation Anchors

Screws

Drill Bits

Scaffold Fasteners

Solar System Fasteners

Special Fixing



Product	Art. No.	Body Diameter	Nail Length	Head Diameter	Qty Per Box
NK 16	31201	3,7	16	5,6	100
NK 19	31202	3,7	19	5,6	100
NK 22	31203	3,7	22	5,6	100
NK 27	31204	3,7	27	5,6	100
NK 32	31205	3,7	32	5,6	100
NK 37	31206	3,7	37	5,6	100
NK 42	31207	3,7	42	5,6	100
NK 47	31208	3,7	47	5,6	100
NK 52	31209	3,7	52	5,6	100
NK 62	31210	3,7	62	5,6	100
NK 72	31211	3,7	72	5,6	100
NK 82	31212	3,7	82	5,6	100
NK 92	31213	3,7	92	5,6	100



PTS

6,8 / 11 Cartridges

Product	Art. No.	Colour	Strength Levels	Qty Per Box
PTS-Y	31301	Yellow	Medium	100
PTS-R	31302	Red	Strong	100
PTS-B	31303	Black	Extremely Powerful	100



Chemical Anchors

Heavy Duty Anchors

General Purpose Fasteners

Frame Anchors

Aerated Concrete Anchors

Drywall Anchors

Nailing Systems

Insulation Anchors

Screws

Drill Bits

Scaffold Fasteners

Solar System Fasteners

Special Fixing





Chemical Anchors

FX-120 IE

Battery Insulation Nail Gun

Main Material

- Concrete
- Steel
- Wood

Application Field

- Insulation
- Drywall
- Facades
- Steel Profiles
- Warning Sign Boards
- Tunnel Applications



NEW PRODUCT

20V BRUSHLESS MOTOR

- The most powerful nail gun in its class: 120 Joules
- 20V Lithium-ion Battery Power
- Adjustable nail driving depth
- Fast cooling with a powerful fan
- Ability for rapid continuous nailing
- Adjustable Nailing Power
- Easy magazine removal mechanism
- Brushless Motor Technology
- Drives Up To 600 Nails / Charge
- Belt hook accessory
- Led Light Indicator
- Fastener Range 0.78" to 4.72" (20-120mm)

Heavy Duty Anchors

General Purpose Fasteners

Frame Anchors

Aerated Concrete Anchors

Drywall Anchors

Nailing Systems

Insulation Anchors

Screws

Drill Bits

Scaffold Fasteners

Solar System Fasteners

Special Fixing



FX-120 IE

Technical Information

Product	Art. No.	Compatible Nail
FX-120 IE	39012	IE

FX-120 IE

Package Contents

- 1 Vesta Hardcase Professional Bag
- FX-120 IE nail gun
- 2 indicator-equipped Li-ion batteries
- 1 Charger
- 1 Charger cable
- 1 Safety goggles
- 1 Earplugs for hearing protection
- 1 User manual

Complementary Products



page 91



NO FUEL CELL !!



- Driven with a nail gun.
- At least 10 times faster than traditional fastening methods.
- Particularly useful for overhead applications.

Product	Art. No.	Anchor Length	Head Diameter	Qty Per Box
IE 30/60	72311	30	60	1000
IE 40/60	72312	40	60	1000
IE 50/60	72313	50	60	1000
IE 60/60	72314	60	60	1000
IE 70/60	72318	70	60	1000
IE 80/60	72315	80	60	1000
IE 90/60	72319	90	60	1000
IE 100/60	72316	100	60	250
IE 120/60	72317	120	60	200
IE 140/60	72320	140	60	200
IE 150/60	72321	150	60	150
IE 160/60	72322	160	60	150
IE 180/60	72323	180	60	100
IE 200/60	72324	200	60	100

IE

Insulation Plug For Nailers

Main Material

- Concrete
- Steel
- Wood

Application Field

- Insulation
- Drywall
- Facades
- Structural Steel Sections
- Warning Sign Boards
- Tunnels Applications

IE

Technical Information



Chemical Anchors

Heavy Duty Anchors

General Purpose Fasteners

Frame Anchors

Aerated Concrete Anchors

Drywall Anchors

Nailing Systems

Insulation Anchors

Screws

Drill Bits

Scaffold Fasteners

Solar System Fasteners

Special Fixing





Chemical Anchors

MET II

Metal Insulation Anchor

Main Material

- Concrete
- Solid Brick
- Hollow Brick
- Aerated Concrete
- Bims

Application Field

- XPS
- EPS
- Mineral Wool Panel

Heavy Duty Anchors

General Purpose Fasteners

Frame Anchors

Aerated Concrete Anchors

Drywall Anchors

Nailing Systems

Insulation Anchors

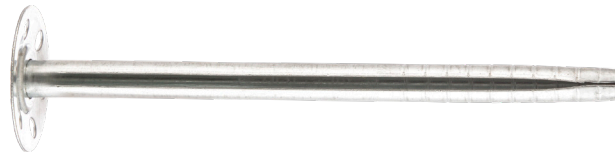
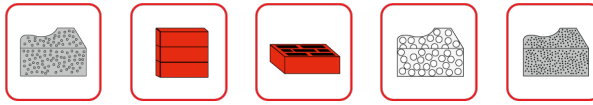
Screws

Drill Bits

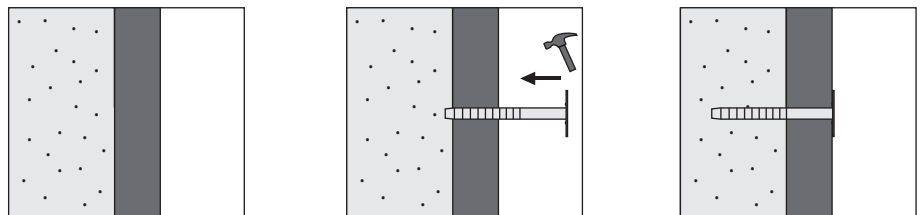
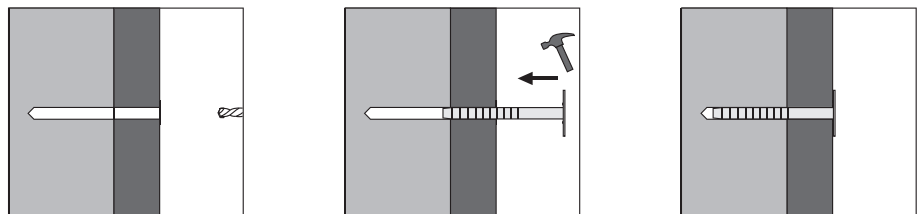
Scaffold Fasteners

Solar System Fasteners

Special Fixing



- A1 class fire resistance
- High mechanical strength
- Excellent adhesion
- Quick assembly with a hammer
- Installation without the need for drilling in aerated concrete



MET II

Concrete Application

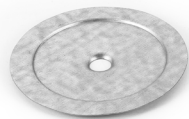
MET II

Aerated Concrete Application

MET II

Insulation Anchor

Product	Art. No.	Hole Diameter	Anchor Length	Qty Per Box	Qty Per Carton
MET II 8x90	72431	8	90	50	500
MET II 8x110	72432	8	110	50	500
MET II 8x140	72433	8	140	50	500
MET II 8x170	72434	8	170	50	450
MET II 8x200	72435	8	200	50	350
MET II 8x240	72436	8	240	50	250
MET II 8x300	72437	8	300	50	250



Product	Art. No.	Washer Diameter	Qty Per Box
MET-W 80	72410	80	500

MET W

Washer

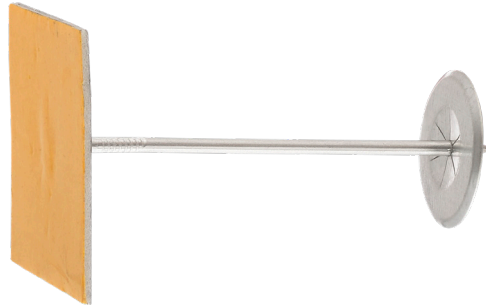
Complementary Products



page 99



page 100



- Features a safe connection due to its high-grade adhesive.
- Insulation materials of varying thicknesses can be connected.
- The special clip prevents disassembly even under vibration.

Product	Art. No.	Anchor Length	Qty Per Box
YMD 40	72501	40	500
YMD 70	72502	60	500
YMD 80	72503	80	400
YMD 100	72504	100	400
YMD 120	72505	120	300
YMD 150	72506	150	250
YMD 180	72507	180	200

Product	Art. No.	Anchor Length	Qty Per Box
YMD-INOX 40	72601	40	500
YMD-INOX 70	72602	60	500
YMD-INOX 80	72603	80	400
YMD-INOX 100	72604	100	400
YMD-INOX 120	72605	120	300
YMD-INOX 150	72606	150	250
YMD-INOX 180	72607	180	200

YMD

Self-adhesive
Insulation Hanger

Main Material

- Steel Surfaces
- Aluminium Surfaces

Application Field

- Facades
- Air Duct System

YMD

YMD-INOX

Stainless Steel



Chemical Anchors

Heavy Duty Anchors

General Purpose Fasteners

Frame Anchors

Aerated Concrete Anchors

Drywall Anchors

Nailing Systems

Insulation Anchors

Screws

Drill Bits

Scaffold Fasteners

Solar System Fasteners

Special Fixing





Chemical Anchors

TSC

Formwork Installation Screw

Heavy Duty Anchors

Main Material

- Fibre Board
- Wood
- Particle Board
- MDF

General Purpose Fasteners

Application Field

- Concrete Molds
- Wood Joints

Frame Anchors

Aerated Concrete Anchors

Drywall Anchors

Nailing Systems

Insulation Anchors

Screws

Drill Bits

TSC

Technical Information

Scaffold Fasteners

Solar System Fasteners

Complementary Products



page 36



page 95

Special Fixing



- Tip ensures easy entry into wood surfaces
- Threads provide superior holding power
- Helical flutes prevent over-tightening and damage to the material
- Head protutions ensure a flush fit of the screw head
- Torx socket reduces wear and tear, allowing for repeated assembly and disassembly.

Product	Art. No.	Screw Diameter	Screw Length	Qty Per Box	Box
TSC 6x60	73011	6	60	250	1000



- It has two heads.
- The first head sits on the wood.
- The second head remains outside.
- The second head can be easily removed with a puller.

Product	Art. No.	Nail		Qty Per Carton
		Diameter	Nail Length	
HAN 3X75	77001	3	75	2700

HAN 3,0x75

Double Head Nail

Main Material

- Fibre Board
- Wood
- Particle Board
- MDF

Application Field

- Concrete Molds
- Wood Joints

HAN 3,0x75

Technical Information

Complementary Products



page 36



page 94



Chemical Anchors

Heavy Duty Anchors

General Purpose Fasteners

Frame Anchors

Aerated Concrete Anchors

Drywall Anchors

Nailing Systems

Insulation Anchors

Screws

Drill Bits

Scaffold Fasteners

Solar System Fasteners

Special Fixing





Chemical Anchors

VBM-T

Hex Head Bimetal Screw

Heavy Duty Anchors

General Purpose Fasteners

Frame Anchors

Aerated Concrete Anchors

Drywall Anchors

Nailing Systems

Insulation Anchors

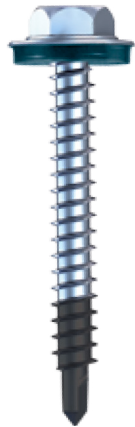
Screws

Drill Bits

Scaffold Fasteners

Solar System Fasteners

Special Fixing

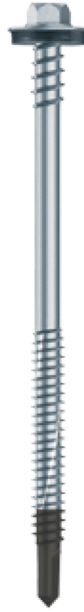


- The body of the product is made of stainless steel
- It has hardened drilling tip
- While the drilling tip performs the drilling and threading tasks, the stainless steel section provides corrosion resistance, enhancing the product's longevity

VBM-T

Technical Information

Non-Washer Art. No.	With Washer Art. No.	Diameter x Length	Capacity of Drilling
7599848016	7599948016	4,8x16	3
7599848019	7599948019	4,8x19	3
7599848025	7599948025	4,8x25	3
7599848032	7599948032	4,8x32	3
7599848038	7599948038	4,8x38	3
7599848050	7599948050	4,8x50	3
7599855022	7599955022	5,5x22	5
7599855025	7599955025	5,5x25	5
7599855032	7599955032	5,5x32	5
7599855038	7599955038	5,5x38	5
7599855045	7599955045	5,5x45	5
7599855050	7599955050	5,5x50	5
7599855063	7599955063	5,5x63	5
7599863025	7599963025	6,3x25	6
7599863032	7599963032	6,3x32	6
7599863038	7599963038	6,3x38	6
7599863045	7599963045	6,3x45	6
7599863050	7599963050	6,3x50	6
7599863063	7599963063	6,3x63	6
7599863070	7599963070	6,3x70	6
7599863080	7599963080	6,3x80	6
7599863120	7599963120	6,3x120	6
7599863140	7599963140	6,3x140	6
7599863160	7599963160	6,3x160	6
7599863180	7599963180	6,3x180	6
7599863200	7599963200	6,3x200	6
7599863220	7599963220	6,3x220	6



- The body of the product is made of stainless steel
- It has a hardened drilling tip
- While the drilling tip performs the drilling and threading tasks, the stainless steel portion ensures corrosion resistance
- The under-head threading provides a secure connection

Non-Washer Art. No	With Washer Art. No.	Diameter x Length	Capacity of Drilling
7599655155	7599755155	5,5x155	6
7599655175	7599755175	5,5x175	6
7599655200	7599755200	5,5x200	6
7599655235	7599755235	5,5x235	6
7599655250	7599755250	5,5x250	6
7599655275	7599755275	5,5x275	6
7599655300	7599755300	5,5x300	6
7599655155	7599755155	5,5x155	12
7599655175	7599755175	5,5x175	12
7599655200	7599755200	5,5x200	12
7599655235	7599755235	5,5x235	12
7599655250	7599755250	5,5x250	12
7599655275	7599755275	5,5x275	12
7599655300	7599755300	5,5x300	12

VBM-P

Hex Head Bimetal
Panel Screw

VBM-P

Technical Information



Chemical
Anchors

Heavy Duty
Anchors

General
Purpose
Fasteners

Frame
Anchors

Aerated
Concrete
Anchors

Drywall
Anchors

Nailing
Systems

Insulation
Anchors

Screws

Drill
Bits

Scaffold
Fasteners

Solar
System
Fasteners

Special
Fixing





Chemical Anchors

KÄFT

4 Cutter

SDS-MAX Drill Bit

Heavy Duty Anchors

General Purpose Fasteners

Frame Anchors

KÄFT

Technical Information

Aerated Concrete Anchors

Drywall Anchors

Nailing Systems

Insulation Anchors



Ø 12 - 16

Screws

Drill Bits



Ø 18 - 50

Scaffold Fasteners

Solar System Fasteners

Special Fixing



- Embedded diamond head for high durability in reinforced concrete
- High-grade diamonds and specialized body geometry for maximum performance and speed
- Wide discharge channels for continuous dust removal and prevention of clogging
- Minimum vibration for user comfort
- Easy to position and resistant to slippage even after prolonged use
- Professional full diamond-coated drill bit for heavy-duty applications
- Long-lasting design ensures durability and extended tool life

Product	Art. No.	Drill Dia.	Total Length	Drilling Capacity	Product	Art. No.	Drill Dia.	Total Length	Drilling Capacity
KÄFT 12x340	23501	12	340	200	KÄFT 25x320	23533	25	320	200
KÄFT 12x540	23502	12	540	400	KÄFT 25x520	23534	25	520	400
KÄFT 12x740	23503	12	740	600	KÄFT 25x720	23535	25	720	600
KÄFT 13x340	23504	13	340	200	KÄFT 25x920	23536	25	920	800
KÄFT 13x540	23505	13	540	400	KÄFT 25x1320	23537	25	1320	1200
KÄFT 14x340	23506	14	340	200	KÄFT 26x320	23538	26	320	200
KÄFT 14x540	23507	14	540	400	KÄFT 26x520	23539	26	520	400
KÄFT 14x740	23508	14	740	600	KÄFT 28x320	23540	28	320	200
KÄFT 15x340	23509	15	340	200	KÄFT 28x520	23541	28	520	400
KÄFT 15x540	23510	15	540	400	KÄFT 28x720	23542	28	720	600
KÄFT 16x340	23511	16	340	200	KÄFT 28x920	23543	28	920	800
KÄFT 16x540	23512	16	540	400	KÄFT 30x320	23544	30	320	200
KÄFT 16x740	23513	16	740	600	KÄFT 30x520	23545	30	520	400
KÄFT 16x940	23514	16	940	800	KÄFT 30x720	23546	30	720	600
KÄFT 16x1340	23515	16	1340	1200	KÄFT 32x320	23547	32	320	200
KÄFT 18x340	23516	18	340	200	KÄFT 32x520	23548	32	520	400
KÄFT 18x540	23517	18	540	400	KÄFT 32x720	23549	32	720	600
KÄFT 18x740	23518	18	740	600	KÄFT 32x920	23550	32	920	800
KÄFT 18x940	23519	18	940	800	KÄFT 32x1320	23551	32	1320	1200
KÄFT 19x320	23520	19	320	200	KÄFT 35x320	23552	35	320	200
KÄFT 19x520	23521	19	520	400	KÄFT 35x520	23553	35	520	400
KÄFT 20x320	23522	20	320	200	KÄFT 35x720	23554	35	720	600
KÄFT 20x520	23523	20	520	400	KÄFT 38x320	23555	38	320	200
KÄFT 20x720	23524	20	720	600	KÄFT 38x520	23556	38	520	400
KÄFT 20x920	23525	20	920	800	KÄFT 38x720	23557	38	720	600
KÄFT 22x320	23526	22	320	200	KÄFT 40x320	23558	40	320	200
KÄFT 22x520	23527	22	520	400	KÄFT 40x520	23559	40	520	400
KÄFT 22x720	23528	22	720	600	KÄFT 40x720	23560	40	720	600
KÄFT 22x920	23529	22	920	800	KÄFT 40x920	23561	40	920	800
KÄFT 22x1320	23530	22	1320	1200	KÄFT 40x1320	23562	40	1320	1200
KÄFT 24x320	23531	24	320	200	KÄFT 45x520	23563	45	520	400
KÄFT 24x520	23532	24	520	400	KÄFT 50x520	23564	50	520	400



- Long-lasting durability
- Extra tough diamond head designed specifically for embedded concrete applications
- Reduced cost per hole due to extended lifespan
- High-grade diamond and specialized body geometry for maximum efficiency and high-speed performance
- Wide flute design facilitates continuous debris removal, preventing material clogging
- Minimal vibration for enhanced user comfort
- Easy positioning mechanics that prevent slippage even after prolonged use

Product	Art. No.	Drill Dia.	Total Length	Drilling Capacity	Product	Art. No.	Drill Dia.	Total Length	Drilling Capacity
PRO-X3 5x110	23301	5	110	50	PRO-X3 10x260	23328	10	260	200
PRO-X3 5x160	23302	5	160	100	PRO-X3 10x310	23329	10	310	250
PRO-X3 5,5x110	23303	5,5	110	50	PRO-X3 10x450	23330	10	450	390
PRO-X3 5,5x160	23304	5,5	160	100	PRO-X3 10x600	23331	10	600	540
PRO-X3 5,5x310	23305	5,5	310	250	PRO-X3 12x160	23332	12	160	100
PRO-X3 6x110	23306	6	110	50	PRO-X3 12x210	23333	12	210	150
PRO-X3 6x160	23307	6	160	100	PRO-X3 12x260	23334	12	260	200
PRO-X3 6x210	23308	6	210	150	PRO-X3 12x310	23335	12	310	250
PRO-X3 6x260	23309	6	260	200	PRO-X3 12x450	23336	12	450	390
PRO-X3 6x310	23310	6	310	250	PRO-X3 12x600	23337	12	600	540
PRO-X3 6,5x110	23311	6,5	110	50	PRO-X3 13x160	23338	13	160	100
PRO-X3 6,5x160	23312	6,5	160	100	PRO-X3 13x250	23339	13	250	190
PRO-X3 6,5x210	23313	6,5	210	150	PRO-X3 13x300	23340	13	300	240
PRO-X3 6,5x260	23314	6,5	260	200	PRO-X3 14x160	23341	14	160	100
PRO-X3 6,5x295	23315	6,5	295	235	PRO-X3 14x200	23342	14	200	140
PRO-X3 6,5x360	23316	6,5	360	300	PRO-X3 14x250	23343	14	250	190
PRO-X3 7x160	23317	7	160	100	PRO-X3 14x300	23344	14	300	240
PRO-X3 7x210	23318	7	210	150	PRO-X3 14x450	23345	14	450	390
PRO-X3 8x110	23319	8	110	50	PRO-X3 14x600	23346	14	600	540
PRO-X3 8x160	23320	8	160	100	PRO-X3 15x160	23347	15	160	100
PRO-X3 8x210	23321	8	210	150	PRO-X3 15x250	23348	15	250	190
PRO-X3 8x260	23322	8	260	200	PRO-X3 15x300	23349	15	300	240
PRO-X3 8x310	23323	8	310	250	PRO-X3 16x200	23350	16	200	140
PRO-X3 8x450	23324	8	450	390	PRO-X3 16x260	23351	16	260	200
PRO-X3 10x110	23325	10	110	50	PRO-X3 16x300	23352	16	300	240
PRO-X3 10x160	23326	10	160	100	PRO-X3 16x450	23353	16	450	390
PRO-X3 10x210	23327	10	210	150	PRO-X316x600	23354	16	600	540

PRO-X3

Multi Cutter
SDS-PLUS Drill Bit

PRO-X3

Technical Information



Chemical Anchors

Heavy Duty Anchors

General Purpose Fasteners

Frame Anchors

Aerated Concrete Anchors

Drywall Anchors

Nailing Systems

Insulation Anchors

Screws

Drill Bits

Scaffold Fasteners

Solar System Fasteners

Special Fixing





RUNNER

Drill Bit



- Double diamond head
- Durable and long-lasting
- Diamond embedded in the body
- Effective dust discharge
- Low vibration
- Easy positioning, does not slip even after prolonged use

Chemical Anchors

Heavy Duty Anchors

General Purpose Fasteners

Frame Anchors

RUNNER

Technical Information

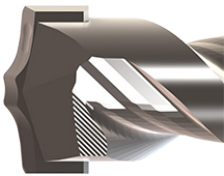
Aerated Concrete Anchors

Drywall Anchors

Nailing Systems

Insulation Anchors

Screws



Drill Bits

Scaffold Fasteners

Solar System Fasteners

Special Fixing



Product	Art. No.	Drill Diameter	Total Length	Drill Length
RUNNER 4x110	23101	4	110	50
RUNNER 4x160	23102	4	160	100
RUNNER 5x110	23103	5	110	50
RUNNER 5x160	23104	5	160	100
RUNNER 5x410	23105	5	410	350
RUNNER 5x210	23106	5	210	150
RUNNER 5,5x110	23107	5,5	110	50
RUNNER 5,5x160	23108	5,5	160	100
RUNNER 5,5x410	23109	5,5	410	350
RUNNER 5,5x210	23110	5,5	210	150
RUNNER 6x110	23111	6	110	50
RUNNER 6x160	23112	6	160	100
RUNNER 6x210	23113	6	210	150
RUNNER 6x260	23114	6	260	200
RUNNER 6x360	23115	6	360	300
RUNNER 6,5x110	23116	6,5	110	50
RUNNER 6,5x160	23117	6,5	160	100
RUNNER 6,5x210	23118	6,5	210	150
RUNNER 6,5x260	23119	6,5	260	200
RUNNER 6,5x295	23120	6,5	295	235
RUNNER 7x110	23121	7	110	50
RUNNER 7x160	23122	7	160	100
RUNNER 7x210	23123	7	210	150
RUNNER 8x110	23124	8	110	50
RUNNER 8x160	23125	8	160	100
RUNNER 8x210	23126	8	210	150
RUNNER 8x260	23127	8	260	200
RUNNER 8x310	23128	8	310	250
RUNNER 8x600	23129	8	600	540
RUNNER 9x160	23130	9	160	100



RUNNER

Double Diamond

Chemical Anchors

Heavy Duty Anchors

RUNNER

Technical Information

General Purpose Fasteners

Frame Anchors

Aerated Concrete Anchors

Drywall Anchors

Nailing Systems

Insulation Anchors

Screws

Drill Bits

Scaffold Fasteners

Solar System Fasteners

Special Fixing



Product	Art. No.	Drill Diameter	Total Length	Drill Length
RUNNER 9x210	23131	9	210	150
RUNNER 10x110	23132	10	110	50
RUNNER 10x160	23133	10	160	100
RUNNER 10x210	23134	10	210	150
RUNNER 10x260	23135	10	260	200
RUNNER 10x310	23136	10	310	250
RUNNER 10x360	23137	10	360	300
RUNNER 10x460	23138	10	460	400
RUNNER 10x600	23139	10	600	540
RUNNER 10x1000	23140	10	1000	940
RUNNER 11x160	23141	11	160	100
RUNNER 11x210	23142	11	210	150
RUNNER 11x260	23143	11	260	200
RUNNER 11x310	23144	11	310	250
RUNNER 12x160	23145	12	160	100
RUNNER 12x210	23146	12	210	150
RUNNER 12x260	23147	12	260	200
RUNNER 12x310	23148	12	310	250
RUNNER 12x450	23149	12	450	390
RUNNER 12x600	23150	12	600	540
RUNNER 12x1000	23151	12	1000	940
RUNNER 12x1400	23152	12	1400	1340
RUNNER 13x160	23153	13	160	100
RUNNER 13x250	23154	13	250	190
RUNNER 13x300	23155	13	300	240
RUNNER 13x450	23156	13	450	390
RUNNER 14x160	23157	14	160	100
RUNNER 14x200	23158	14	200	140
RUNNER 14x250	23159	14	250	190
RUNNER 14x300	23160	14	300	240
RUNNER 14x450	23161	14	450	390
RUNNER 14x600	23162	14	600	540
RUNNER 14x1000	23163	14	1000	940
RUNNER 15x160	23164	15	160	100
RUNNER 15x200	23165	15	200	140
RUNNER 15x250	23166	15	250	190
RUNNER 15x450	23167	15	450	390

Product	Art. No.	Drill Diameter	Total Length	Drill Length
RUNNER 16x160	23168	16	160	100
RUNNER 16x200	23169	16	200	140
RUNNER 16x250	23170	16	250	190
RUNNER 16x300	23171	16	300	240
RUNNER 16x450	23172	16	450	390
RUNNER 16x600	23173	16	600	540
RUNNER 16x800	23174	16	800	740
RUNNER 16x1000	23175	16	1000	940
RUNNER 16x1400	23176	16	1400	1340
RUNNER 18x200	23177	18	200	140
RUNNER 18x250	23178	18	250	190
RUNNER 18x300	23179	18	300	240
RUNNER 18x450	23180	18	450	390
RUNNER 18x600	23181	18	600	540
RUNNER 18x800	23182	18	800	740
RUNNER 18x1000	23183	18	1000	940
RUNNER 19x200	23184	19	200	140
RUNNER 19x450	23185	19	450	390
RUNNER 20x200	23186	20	200	140
RUNNER 20x300	23187	20	300	240
RUNNER 20x450	23188	20	450	390
RUNNER 20x600	23189	20	600	540
RUNNER 20x1000	23190	20	1000	940
RUNNER 22x250	23191	22	250	190
RUNNER 22x450	23192	22	450	390
RUNNER 22x600	23193	22	600	540
RUNNER 22x800	23194	22	800	740
RUNNER 22x1000	23195	22	1000	940
RUNNER 24x250	23196	24	250	190
RUNNER 24x450	23197	24	450	390
RUNNER 25x250	23198	25	250	190
RUNNER 25x300	23199	25	300	240
RUNNER 25x450	23200	25	450	390
RUNNER 25x1000	23201	25	1000	940
RUNNER 26x250	23202	26	250	190
RUNNER 26x450	23203	26	450	390



Chemical Anchors

SFA

Scaffold Fixing Anchor

Heavy Duty Anchors

General Purpose Fasteners

Frame Anchors

Aerated Concrete Anchors

Drywall Anchors

Nailing Systems

Insulation Anchors

Screws

Drill Bits

Scaffold Fasteners

Solar System Fasteners

Special Fixing



- With a 50mm inner diameter head, it can be used with SFB.
- The body can be disassembled and reused with a different anchor.

SFA

Technical Information

Product	Art. No.	Hole Diameter	Hole Length	Wall Offset Length
SFA 120	79201	18	130	100
SFA 170	79202	18	180	100

Complementary Products



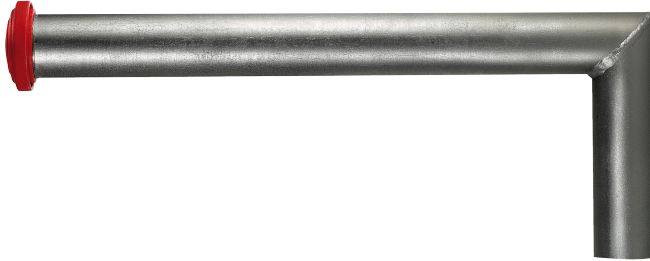
page 99



page 100



page 36



- Its 48mm pipe diameter allows for compatibility with SFA.
- Reusable.

Product	Art. No.	Pipe Diameter	Pipe Length	Length After Bending
SFB 300	79203	48	300	170
SFB 500	79204	48	500	170
SFB 1000	79205	48	1000	170

SFB

Scaffold Fixing Pipe

SFB

Technical Information

Complementary Products



page 99



page 100



page 36



Chemical Anchors

Heavy Duty Anchors

General Purpose Fasteners

Frame Anchors

Aerated Concrete Anchors

Drywall Anchors

Nailing Systems

Insulation Anchors

Screws

Drill Bits

Scaffold Fasteners

Solar System Fasteners

Special Fixing



SOLAR SYSTEM FIXING PARTS



Chemical Anchors

Heavy Duty Anchors

General Purpose Fasteners

Frame Anchors

Aerated Concrete Anchors

Drywall Anchors

Nailing Systems

Insulation Anchors

Screws

Drill Bits

Scaffold Fasteners

Solar System Fasteners

Special Fixing



SOLAR SYSTEM FIXING PARTS



Chemical Anchors

Heavy Duty Anchors

General Purpose Fasteners

Frame Anchors

Aerated Concrete Anchors

Drywall Anchors

Nailing Systems

Insulation Anchors

Screws

Drill Bits

Scaffold Fasteners

Solar System Fasteners

Special Fixing





Chemical Anchors

SLFS

Solar System Fixing Screw

Heavy Duty Anchors

General Purpose Fasteners

Frame Anchors

Aerated Concrete Anchors

Drywall Anchors

SLFS

Technical Information

Nailing Systems

Insulation Anchors

Screws

Drill Bits

Scaffold Fasteners

Solar System Fasteners

Special Fixing



- Provides connection of the solar system to the steel structure.
- Ensures water tightness with special EPDM screw.
- Elevated mounting with stand-off feature for roof installation.

Product	Art. No.	Metal Thread Length	Metric Thread Length	Qty Per Box
SLFS 8x80/50	750018008050	80	50	10
SLFS 8x80/70	750018008070	80	70	10
SLFS 8x100/50	750018010050	100	50	10
SLFS 8x100/70	750018010070	100	70	10
SLFS 8x125/50	750018012550	125	50	10
SLFS 8x125/70	750018012570	125	70	10
SLFS 8x150/50	750018015050	150	50	10
SLFS 8x150/70	750018015070	150	70	10
SLFS 8x160/50	750018016050	160	50	10
SLFS 8x160/70	750018016070	160	70	10
SLFS 8x200/50	750018020050	200	50	10
SLFS 8x200/70	750018020070	200	70	10
SLFS 8,4x80/50	750018408050	80	50	10
SLFS 8,4x80/70	750018408070	80	70	10
SLFS 8,4x100/50	750018410050	100	50	10
SLFS 8,4x100/70	750018410070	100	70	10
SLFS 8,4x130/50	750018413050	130	50	10
SLFS 8,4x130/70	750018413070	130	70	10
SLFS 8,4x150/50	750018415050	150	50	10
SLFS 8,4x150/70	750018415070	150	70	10
SLFS 8,4x180/50	750018418050	180	50	10
SLFS 8,4x180/70	750018418070	180	70	10
SLFS 8,4x200/50	750018420050	200	50	10
SLFS 8,4x200/70	750018420070	200	70	10



- Bimetal pointed connection screw
- Its stainless body provides corrosion resistance
- Hardened screw tip ensures penetration into steel

Product	Art. No.	Screw Diameter	Screw Length	Qty Per Box
SLFV 5,5x25	750035525	5,5	25	200
SLFV 5,5x35	750035535	5,5	35	200

Product	Art. No.	Screw Diameter	Screw Length	Qty Per Box
SLFV-INOX 5,5x25	750025525	5,5	25	200
SLFV-INOX 5,5x35	750025535	5,5	35	200

SLFV

Solar System Fixing Screw

SLFV

Technical Information

SLFV-INOX

Stainless Steel

Solar System Fixing Screw



Chemical Anchors

Heavy Duty Anchors

General Purpose Fasteners

Frame Anchors

Aerated Concrete Anchors

Drywall Anchors

Nailing Systems

Insulation Anchors

Screws

Drill Bits

Scaffold Fasteners

Solar System Fasteners

Special Fixing





Chemical Anchors

Heavy Duty Anchors

General Purpose Fasteners

Frame Anchors

Aerated Concrete Anchors

Drywall Anchors

Nailing Systems

Insulation Anchors

Screws

Drill Bits

Scaffold Fasteners

Solar System Fasteners

Special Fixing



IP

Injection Packers



IP 13x80 - IP 13x100



IP 13x150 - IP 13x200

- Allows the application of crack injection materials
- Prevents backflow in grease fittings

IP

Technical Information

Product	Art. No.	Hole Diameter	Packers Length	Package
IP 13x80	79801	13	80	500
IP 13x100	79802	13	100	500
IP 13x150	79803	13	150	400
IP 13x200	79804	13	200	250

Complementary Products



page 99



page 100



- Provides shape connection in a reverse-angled hole
- Reduces the risk of granite breakage
- Offers secure connection.



Product	Art. No.	Screw	Anchor Length
KF 6x16	79101	M6	16
KF 6x20	79102	M6	20
KF 6x25	79103	M6	25
KF 6x30	79104	M6	30
KF 6x40	79105	M6	40
KF 6x50	79106	M6	50
KF 6x60	79107	M6	60



Product	Art. No.	Screw	Anchor Length
KF-INOX 6x16	79111	M6	16
KF-INOX 6x20	79112	M6	20
KF-INOX 6x25	79113	M6	25
KF-INOX 6x30	79114	M6	30
KF-INOX 6x40	79115	M6	40
KF-INOX 6x50	79116	M6	50
KF-INOX 6x60	79117	M6	60

KF

Anchor For Granite Application

KF

Zinc Plated

KF

Stainless Steel

Complementary Products



page 38



page 42



Chemical Anchors

Heavy Duty Anchors

General Purpose Fasteners

Frame Anchors

Aerated Concrete Anchors

Drywall Anchors

Nailing Systems

Insulation Anchors

Screws

Drill Bits

Scaffold Fasteners

Solar System Fasteners

Special Fixing





Chemical Anchors

CBT-N

Cable Tie , Naturel

Heavy Duty Anchors

General Purpose Fasteners

Frame Anchors

Aerated Concrete Anchors

Drywall Anchors

Nailing Systems

Insulation Anchors

Screws

Drill Bits

Scaffold Fasteners

Solar System Fasteners

Special Fixing



CBT-N

Technical Information

Product	Art. No.	Width (mm)	Length (mm)	Max.Fixture Diameter
CBT-N 2,5x100	79301	2,5	100	22
CBT-N 2,5x140	79302	2,5	140	35
CBT-N 2,5x200	79303	2,5	200	54
CBT-N 3,6x100	79304	3,6	100	21
CBT-N 3,6x150	79305	3,6	150	36
CBT-N 3,6x205	79306	3,6	205	54
CBT-N 3,6x250	79307	3,6	250	68
CBT-N 3,6x300	79308	3,6	300	81
CBT-N 3,6x370	79309	3,6	370	102
CBT-N 4,8x200	79310	4,8	200	50
CBT-N 4,8x250	79311	4,8	250	63
CBT-N 4,8x300	79312	4,8	300	80
CBT-N 4,8x400	79313	4,8	400	109
CBT-N 8x250	79314	8	250	62
CBT-N 8x300	79315	8	300	75
CBT-N 8x380	79316	8	380	99
CBT-N 8x450	79317	8	450	124
CBT-N 8x550	79318	8	550	160
CBT-N 8x750	79319	8	750	220
CBT-N 9x762	79320	9	762	225
CBT-N 9x940	79321	9	940	290



Product	Art. No.	Width (mm)	Length (mm)	Max.Fixture Diameter
CBT-B	79351	2,5	100	22
CBT-B	79352	2,5	140	35
CBT-B	79353	2,5	200	54
CBT-B	79354	3,6	100	21
CBT-B	79355	3,6	150	36
CBT-B	79356	3,6	205	54
CBT-B	79357	3,6	250	68
CBT-B	79358	3,6	300	81
CBT-B	79359	3,6	370	102
CBT-B	79360	4,8	200	50
CBT-B	79361	4,8	250	63
CBT-B	79362	4,8	300	80
CBT-B	79363	4,8	400	109
CBT-B	79364	8	250	62
CBT-B	79365	8	300	75
CBT-B	79366	8	380	99
CBT-B	79367	8	450	124
CBT-B	79368	8	550	160
CBT-B	79369	8	750	220
CBT-B	79370	9	762	225
CBT-B	79371	9	940	290

CBT-B

Cable Tie , Black

CBT-B

Technical Information



Chemical Anchors

Heavy Duty Anchors

General Purpose Fasteners

Frame Anchors

Aerated Concrete Anchors

Drywall Anchors

Nailing Systems

Insulation Anchors

Screws

Drill Bits

Scaffold Fasteners

Solar System Fasteners

Special Fixing





Chemical Anchors

RSP

Racking Safety Pin

Heavy Duty Anchors

General Purpose Fasteners

Frame Anchors

Aerated Concrete Anchors

Drywall Anchors

Nailing Systems

RSP

Technical Information

Insulation Anchors

Screws

Drill Bits

Scaffold Fasteners

Solar System Fasteners

Special Fixing



- Accidental racking prevention pin

Product	Art. No.	Qty Per Box
RSP 1	74001	1000
RSP 2	74002	1000



VF vesta

FIXING SYSTEMS

www.vestafix.com

Dudullu OSB, DES 103. sokak, No: 58
Ümraniye / İstanbul / Türkiye
Tel: +902164568913 info@vestafix.com